



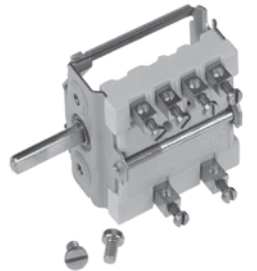
Genuine Hatco
Replacement Parts Price List
U.S. Dollar



page 6



page 15

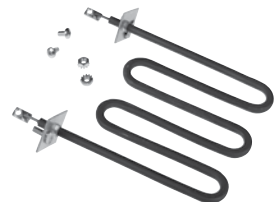


page 15

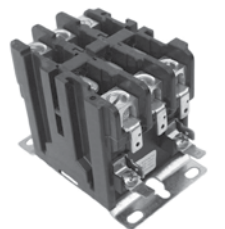


page 39

page 39



page 8



page 28

January, 2012



**GENERAL
INFORMATION**

ORDERING PROCEDURES: To ensure prompt and accurate processing of your order, please specify model with wattage and voltage or part number.

WARRANTY: Hatco OEM replacement parts warranty is 90 days. **Return defective parts to:**
Hatco Corporation
Attn: Quality Control Team
1118 South Neenah Avenue
Sturgeon Bay, WI 54235 U.S.A.

PRICE POLICY: Replacement parts are at suggested list price, F.O.B. Sturgeon Bay, WI. Prices supersede all previously published prices, *subject to change without notice.*

TERMS OF SALE: 1% 10, net 30 days. F.O.B. factory.
Orders under \$100.00 Net or orders requested to be shipped Next Day, Second Day or Third Day, are subject to a \$10.00 handling charge.

BUSINESS HOURS:
Monday-Friday: 8 am to 5 pm Central Standard Time
(Summer Hours: June to September)

Product parts lists, installation information and other literature available upon request, or on our web site at:

www.hatcocorp.com
E-Mail: partsandservice@hatcocorp.com

ADDRESS:
Hatco Corporation
P.O. Box 340500
Milwaukee, WI 53234-0500 U.S.A.

TELEPHONE: (414) 671-6350
(800) 558-0607
FAX ORDERS TO: (800) 690-2966
EXPORT FAX NO: (414) 671-3976

NO REPRODUCTION OF THIS MATERIAL
WITHOUT PRIOR CONSENT FROM HATCO
CORPORATION.

Nothing less than the best.™

Table of Contents

“I” before the part number identifies a special heating element assembly for Infra-Black Foodwarmers. Page 1-2

“R” before part number identifies that the item includes additional parts, i.e., – a water heating element with gasket and terminal screw. Pages 2-21

“X” Series part numbers. Pages 21-27

If you have any questions or need a price on an item not listed, please call the Hatco Parts Department at 1-800-558-0607 or fax us at 1-800-690-2966.

Part Number	Description	Page No.
01.XX.XXX.XX	Tanks-Boosters, 3CS, FR	5, 28
02.01.XXX.XX	Relays, Contactors, Controllers	5, 28
02.03.XXX.XX	Fuses.....	5, 30
02.04.XXX.XX	Booster Heating Elements	6
02.05.XXX.XX	Foil Backed & Blanket Style Elements, Drawer Warmer Elements.....	30
02.06.XXX.XX	3CS/FR Heating Elements.....	7
02.07.XXX.XX	Ceramic Heating Elements	8, 33
02.08.XXX.XX	Glo-Ray Heating Elements.....	8
02.08.XXX.XX	Heated Well Elements	34
02.09.XXX.XX	Toaster Heating Elements.....	12, 34
02.11.XXX.XX	Booster Element Gaskets.....	35
02.12.XXX.XX	Motors & Fans.....	14, 35
02.13.XXX.XX	Rheostat Controls	14
02.15.XXX.XX	Terminal Blocks	14, 35
02.16.XXX.XX	Thermostats, Hi-Limits, Temp. Displays.....	14, 35
02.17.XXX.XX	Transformers	15, 36
02.18.XXX.XX	Wire, Cordsets	15, 36
02.19.XXX.XX	Switches, Receptacles.....	15, 37
02.19.XXX.XX	Indicator Lamps.....	37
02.20.XXX.XX	Snap Plugs, Wire Nuts, Cord Grips ...	38
02.21.XXX.XX	Gas Booster-Electrical Parts.....	15, 39
02.30.XXX.XX	Light Bulbs, Light Sockets	39
02.40.XXX.XX	Diodes, Booster Probe	40
02.41.XXX.XX	Fuse Blocks – Booster.....	40
03.01.XXX.XX	Gauges.....	40
03.02.XXX.XX	Valves.....	40
03.05.XXX.XX	Plumbing Fittings, Pumps	15, 40
03.12.XXX.XX	Gas Orifices, Burners	15, 40
03.30.XXX.XX	Pipe.....	40
03.40.XXX.XX	Fittings, Valves, Tubing	16, 40
04.XX.XXX.XX	Sheet Metal Parts, Display Racks, Breath Protectors	16, 40
04.40.XXX.XX	Glass.....	20, 46
05.01.XXX.XX	Lubricants.....	47
05.02.XXX.XX	Bearings.....	47
05.03.XXX.XX	Chains.....	21, 47
05.04.XXX.XX	Fasteners-Screws, Nuts, Bolts, etc....	47
05.06.XXX.XX	Gasketing, Rubber Materials	48
05.07.XXX.XX	Toaster Conveyor Shafts	49
05.08.XXX.XX	Spring Pins	49
05.09.XXX.XX	Sprockets	21, 49
05.11.XXX.XX	Washers, Lock Washers	49
05.30.XXX.XX	Knobs, Legs, Magnets	49
07.01.XXX.XX	Indicator Plates.....	50



Replacement Parts Price List in US Dollars

January 1, 2012

Item	Description	Unit of Measure	List Price
AS.12.004.00	GRCW-1 SIDE DOOR ASSEMBLY	EA	71.00
AS.12.005.00	GRCW-1 REAR DOOR ASSEMBLY	EA	52.00
AS.141.00	PMG-100,200 HEAT TRAP ASSY	EA	32.00
AS.661.00	GRSD DIODE ASSEMBLY	EA	53.00
I6110012045.625	GRAIH-48 120V 1100W ELEM ASSY	EA	147.00
I6110020845.625	GRAIH-48 208V 1100W ELEM ASSY	EA	147.00
I6110022045.625	GRAIH-48 220V 1100W ELEM ASSY	EA	147.00
I6110024045.625	GRAIH-48 240V 1100W ELEM ASSY	EA	147.00
I6125012051.625	GRAIH-54 120V 1250W ELEM ASSY	EA	163.00
I6125020851.625	GRAIH-54 208V 1250W ELEM ASSY	EA	163.00
I6125024051.625	GRAIH-54 240V 1250W ELEM ASSY	EA	163.00
I6140012057.625	GRAIH-60 120V 1400W ELEM ASSY	EA	191.00
I6140020857.625	GRAIH-60 208V 1400W ELEM ASSY	EA	191.00
I6140022057.625	GRAIH-60 220V 1400W ELEM ASSY	EA	191.00
I6140024057.625	GRAIH-60 240V 1400W ELEM ASSY	EA	191.00
I6156012063.625	GRAIH-66 120V 1560W ELEM ASSY	EA	214.00
I6156020863.625	GRAIH-66 208V 1560W ELEM ASSY	EA	214.00
I6156022063.625	GRAIH-66 220V 1560W ELEM ASSY	EA	214.00
I6156024063.625	GRAIH-66 240V 1560W ELEM ASSY	EA	214.00
I616512015.625	GRAI-18D 120 165W ELEM ASSY	EA	75.00
I6172512069.625	GRAIH-72 120V 1725W ELEM ASSY	EA	220.00
I6172520869.625	GRAIH-72 208V 1725W ELEM ASSY	EA	220.00
I6172524069.625	GRAIH-72 240V 1725W ELEM ASSY	EA	220.00
I625012015.625	GRAI-18D 120V 250W ELEM ASSY	EA	75.00
I631524037.750	GRAI-41 240V 315W ELEMENT ASSY	EA	133.00
I631524040.125	GRAI-84T 240V 315W ELE ASSY	EA	133.00
I635012015.625	GRAIH-18 120V 350W ELEM ASSY	EA	75.00
I635012026.125	GRAI-28D 120V 350W ELEM ASSY	EA	85.00
I635020815.625	GRAIH-18 208V 350W ELEM ASSY	EA	75.00
I635022015.625	GRAIH-18 220V 350W ELEM ASSY	EA	75.00
I635024015.625	GRAIH-18 240V 350W ELEM ASSY	EA	75.00
I640024048.750	GRAI-52 240V 400W ELEMENT ASSY	EA	163.00
I645012026.125	GRAI-28D 120V 450W ELEM ASSY	EA	85.00
I645012038.625	KIT, GRAI-41 120V 450W ELEM ASSY	EA	133.00
I650012021.625	GRAIH-24 120V 500W ELEM ASSY	EA	87.00
I650020821.625	GRAIH-24 208V 500W ELEM ASSY	EA	87.00
I650024021.625	GRAIH-24 240V 500W ELEM ASSY	EA	87.00
I652520852.06	GRAIL-54.5T 208V 525W ELEM ASSY	EA	163.00
I652524052.06	GRAIL-54 240V 525W ELEM-(TB)	EA	163.00
I655012038.625	KIT, GRAI-41 120V 550W ELEM ASSY	EA	133.00
I666012027.625	GRAIH-30 120V 660W ELEM ASSY	EA	102.00
I666020827.625	GRAIH-30 208V 660W ELEM ASSY	EA	102.00
I666022027.625	GRAIH-30 220V 660W ELEM ASSY	EA	102.00
I666024027.625	GRAIH-30 240V 660W ELEM ASSY	EA	102.00
I667520840.125	GRAI-84T 208V 675W ELE ASSY	EA	133.00
I667520841.810	GRAI-44 208V 675W ELE ASSY	EA	133.00
I680012033.625	GRAIH-36 120V 800W ELEM ASSY	EA	118.00
I680020833.625	GRAIH-36 208V 800W ELEM ASSY	EA	118.00
I680020845.625	GRAI-48 208V 800W ELEMENT ASSY	EA	145.00
I680024033.625	GRAIH-36 240V 800W ELEM ASSY	EA	118.00



Replacement Parts Price List in US Dollars

January 1, 2012

Item	Description	Unit of Measure	List Price
I680024045.375	GRAI-48 240V 800W-TACO BELL	EA	145.00
I680024045.625	GRAI-48 240V 800W ELEM ASSY	EA	145.00
I695012039.625	GRAIH-42 120V 950W ELEM ASSY	EA	133.00
I695020839.625	GRAIH-42 208V 950W ELEM ASSY	EA	133.00
I695022039.625	GRAIH-42 220V 950W ELE ASSY	EA	133.00
I695024039.625	GRAIH-42 240V 950W ELEM ASSY	EA	133.00
I9110020845.375	KIT,GRAIW-48 208V 1100W ELEM	EA	147.00
I9120020841.810	KIT,GRAIWHL-44,208V,1200W ELE	EA	178.00
I9125020851.370	GRAIWH-54 208V 1250W ELEM ASSY	EA	205.00
I9140012045.625	KIT,GRAIWHL-48 120V 1400W ELEM	EA	178.00
I9140020845.500	GRAIWHL-96 208V 1400W ELE ASSY	EA	140.00
I9140020856.590	KIT,GRSDSI-60T,208V,1400W,ELEM	EA	244.00
I9156020863.375	GRAIWH-66 208V 1560W ELEM ASSY	EA	257.00
I9172520869.625	GRAIWH-72 208V 1725W ELEM ASSY	EA	281.00
I9180020856.590	KIT,GRSDSI-60T,208V,1800W,ELEM	EA	244.00
I9180020857.375	KIT,GRAIW-60 208V 1800W ELEM	EA	244.00
I9192020863.56	KIT,GRAIW-66 208V 1920W ELEM	EA	261.00
I9220020869.375	KIT,GRAIW-72 208V 2200W ELEM	EA	281.00
I9260020881.625	GRAIWH-84 208V 2600W ELE ASSY	EA	293.00
I980024038.00	GRIBW-4220D 240V 800W ELE ASSY	EA	133.00
R00.01.0001.00	KIT,OUTER DOOR GRHD-2P	EA	118.00
R00.01.0002.00	KIT,INNER DOOR GRHD-2P	EA	118.00
R00.01.0003.00	KIT,OUTER DOOR GRHD-3P	EA	133.00
R00.01.0004.00	KIT,INNER DOOR GRHD-3P	EA	133.00
R00.01.0005.00	KIT,OUTER DOOR GRHD-4P	EA	150.00
R00.01.0006.00	KIT,INNER DOOR GRHD-4P	EA	150.00
R00.01.0007.00	KIT,OUTER DOOR GRHD-2PD	EA	107.00
R00.01.0008.00	KIT,INNER DOOR GRHD-2PD	EA	107.00
R00.01.0009.00	KIT,OUTER DOOR GRHD-3PD	EA	118.00
R00.01.0010.00	KIT,INNER DOOR GRHD-3PD	EA	118.00
R00.01.0011.00	KIT,OUTER DOOR GRHD-4PD	EA	134.00
R00.01.0012.00	KIT,INNER DOOR GRHD-4PD	EA	134.00
R00.01.0013.00	KIT,OUTER MIRROR DOOR GRHD-2P	EA	158.00
R00.01.0014.00	KIT,INNER MIRROR DOOR GRHD-2P	EA	158.00
R00.01.0015.00	KIT,OUTER MIRROR DOOR GRHD-3P	EA	170.00
R00.01.0016.00	KIT,INNER MIRROR DOOR GRHD-3P	EA	170.00
R00.01.0017.00	KIT,OUTER MIRROR DOOR GRHD-4P	EA	188.00
R00.01.0018.00	KIT,INNER MIRROR DOOR GRHD-4P	EA	188.00
R00.01.0019.00	KIT,OUTER MIRROR DOOR GRHD-2PD	EA	145.00
R00.01.0020.00	KIT,INNER MIRROR DOOR GRHD-2PD	EA	145.00
R00.01.0021.00	KIT,OUTER MIRROR DOOR GRHD-3PD	EA	157.00
R00.01.0022.00	KIT,INNER MIRROR DOOR GRHD-3PD	EA	157.00
R00.01.0023.00	KIT,OUTER MIRROR DOOR GRHD-4PD	EA	171.00
R00.01.0024.00	KIT,INNER MIRROR DOOR GRHD-4PD	EA	171.00
R00.01.0025.00	KIT,OUTER DOOR GRCD&GRCDH-2P	EA	118.00
R00.01.0026.00	KIT,INNER DOOR GRCD&GRCDH-2P	EA	118.00
R00.01.0027.00	KIT,OUTER DOOR GRCD&GRCDH-3P	EA	131.00
R00.01.0028.00	KIT,INNER DOOR GRCD&GRCDH-3P	EA	131.00
R00.01.0029.00	KIT,OUTER DOOR GRCD&GRCDH-2PD	EA	111.00
R00.01.0030.00	KIT,INNER DOOR,GRCD&GRCDH-2PD	EA	111.00



Replacement Parts Price List in US Dollars

January 1, 2012

Item	Description	Unit of Measure	List Price
R00.01.0031.00	KIT, OUTER DOOR, GRCD&GRCDH-3PD	EA	127.00
R00.01.0032.00	KIT, INNER DOOR, GRCD&GRCDH-3PD	EA	127.00
R00.01.0033.00	KIT, OUTER MIRROR DOOR-CD-2P	EA	152.00
R00.01.0034.00	KIT, INNER MIRROR DOOR-CD-2P	EA	152.00
R00.01.0035.00	KIT, OUTER MIRROR DOOR-CD-3P	EA	164.00
R00.01.0036.00	KIT, INNER MIRROR DOOR-CD-3P	EA	164.00
R00.01.0037.00	KIT, OUTER MIRROR DOOR-CD-2PD	EA	146.00
R00.01.0038.00	KIT, INNER MIRROR DOOR-CD-2PD	EA	146.00
R00.01.0039.00	KIT, INNER MIRROR DOOR-CD-3PD	EA	158.00
R00.01.0040.00	KIT, OUTER MIRROR DOOR-CD-3PD	EA	158.00
R00.01.0041.00	KIT, SLIDING INNER (LH) DOOR	EA	326.00
R00.01.0042.00	KIT, SLIDING OUTER (R.H.) DOOR	EA	326.00
R00.01.0101.00	KIT, GLASS DOOR, FST	EA	398.00
R00.01.0102.00	KIT, GLASS DOOR, FSHC	EA	398.00
R00.01.0103.00	KIT, DOOR GASKET-FS	EA	44.00
R00.01.0104.00	KIT, DOOR GASKET-FST	EA	44.00
R00.01.0105.00	KIT, DOOR GASKET-FSHC	EA	44.00
R00.01.0107.00	KIT, S.S. DOOR FSHC	EA	431.00
R00.01.0108.00	KIT, L.H. DOOR, FST-CR, WFST	EA	410.00
R00.01.0109.00	KIT, R.H. DOOR, WFST-CR	EA	410.00
R00.01.0110.00	KIT, HINGE-PIN, FS	EA	33.00
R00.01.0111.00	KIT, UPPER GLASS DOOR FST 1 MN	EA	153.00
R00.01.0112.00	KIT, LOWER GLASS DOOR, FST 1 MN	EA	153.00
R00.01.0113.00	KIT, BLACK L.H. DOOR-WFST	EA	472.00
R00.01.0114.00	KIT, BLACK R.H. DOOR-WFST	EA	472.00
R00.01.0115.00	KIT, HINGES W/HDW-"STYLE A"	EA	33.00
R00.01.0116.00	KIT, FSD REVERSIBLE DOOR HDW	EA	66.00
R00.01.0117.00	KIT, GLASS DOOR, PFST	EA	385.00
R00.01.0118.00	KIT, DOOR GASKET FOR PFST	EA	57.00
R00.01.0121.00	KIT, HINGES W/HDW-FSD"STYLE B"	EA	23.00
R00.01.0122.00	KIT, DOOR GASKET-WFST/AFST	EA	44.00
R00.01.0123.00	KIT, GLASS DOOR, FSHC-7 W/HDW	EA	370.00
R00.01.0124.00	KIT, DOOR GASKET-FSHC-7 SERIES	EA	44.00
R00.01.0125.00	KIT, S.S. DOOR, FSHC-7 W/HDW	EA	435.00
R00.01.0126.00	KIT, GLASS DOOR, FSHC-6W W/HDW	EA	413.00
R00.01.0127.00	KIT, DOOR GASKET-FSHC-6W SERIES	EA	44.00
R00.01.0128.00	KIT, S.S. DOOR, FSHC-6W W/HDW	EA	452.00
R00.01.0129.00	KIT, S.S. VENTED DOOR, PH-7 W/HDW	EA	466.00
R00.01.0130.00	KIT, DOOR ASSY HD SS VENT-HC-7	EA	588.00
R00.01.0131.00	KIT, DOOR ASSY HD SS HC-7, NO VT	EA	484.00
R00.01.0132.00	KIT, DOOR ASSY HD GLASS HC-7	EA	484.00
R00.01.0133.00	KIT, DOOR HINGES&HDW, FSHC-6/7	EA	53.00
R00.01.0134.00	KIT, DOOR GASKET-FDWD SERIES	EA	11.00
R00.01.0135.00	KIT, DOOR GASKET-FSD&T SERIES	EA	12.00
R00.01.0137.00	KIT, DOOR ASSY HD SS FSHC-6W	EA	484.00
R00.02.0004.00	KIT, LPG CONVERSION, PMG-60	EA	70.00
R00.02.0005.00	KIT, LPG CONVERSION PMG 100&200	EA	74.00
R00.02.0018.00	KIT, RELAY RETROFIT-700H200&208	EA	55.00
R00.02.0019.00	KIT, RELAY RETROFIT-700H240V	EA	55.00
R00.02.0020.00	KIT, RELAY RETROFIT-700H220V	EA	55.00



Replacement Parts Price List in US Dollars

January 1, 2012

Item	Description	Unit of Measure	List Price
R00.02.0021.00	KIT,RELAY RETROFIT-FR5 208V	EA	55.00
R00.02.0022.00	KIT,RELAY RETROFIT-FR5 240V	EA	55.00
R00.02.0026.00	KIT,RELAY-RETRO-SDS/HD/CD 220V	EA	55.00
R00.02.0027.00	KIT,RELAY-RETRO-SDS/HD/CD 240V	EA	55.00
R00.02.0028.00	KIT,ROCKER SW-GRFHS&LEADS 125V	EA	23.00
R00.02.0029.00	KIT,ROCKER SW-GRFHS&LEADS 250V	EA	32.00
R00.02.0030.00	KIT,GRFHS TOGGLE SW.RETRO-FIT	EA	73.00
R00.02.0044.00	KIT,BLOWER FAN RETRO-HDW-2MN	EA	114.00
R00.02.0046.00	KIT,BLANKING FLANGE,ABB SERIES	EA	26.00
R00.02.0047.00	KIT,AUTO-FILL SENSOR,HWBI	EA	28.00
R00.03.0001.00	KIT,TAIL PIECE EXTENSION	EA	130.00
R00.03.0004.00	KIT,SPRAY MANIFOLD ASSY-HQT	EA	43.00
R00.03.0005.00	KIT,INLET MANIFOLD ASSY-HQT	EA	69.00
R00.04.0001.00	KIT,FRC-LEGS/HOUSING ASSY.	EA	520.00
R00.04.0003.00	KIT,HDW DRAWER ASSEMBLY	EA	381.00
R00.04.0004.00	KIT,BICSUIT DRAWER ASSEMBLY	EA	398.00
R00.04.0005.00	KIT,OVERSIZE DRAWER ASSEMBLY	EA	398.00
R00.04.0017.00	KIT,HDW-XN DRAWER ASSEMBLY	EA	381.00
R00.04.0019.00	KIT,DOOR-2SDS24-SINGLE/TOPDUAL	EA	145.00
R00.04.0020.00	KIT,DOOR-2SDS30-SINGLE/TOPDUAL	EA	168.00
R00.04.0021.00	KIT,DOOR-2SDS36-SINGLE/TOPDUAL	EA	187.00
R00.04.0022.00	KIT,DOOR-2SDS42-SINGLE/TOPDUAL	EA	208.00
R00.04.0023.00	KIT,DOOR-2SDS48-SINGLE/TOPDUAL	EA	251.00
R00.04.0024.00	KIT,DOOR-2SDS54-SINGLE/TOPDUAL	EA	294.00
R00.04.0025.00	KIT,DOOR-2SDS60-SINGLE/TOPDUAL	EA	336.00
R00.04.0026.00	KIT,DOOR-2SDS24-CENTER&BOTTOM	EA	145.00
R00.04.0027.00	KIT,DOOR-2SDS30-CENTER&BOTTOM	EA	168.00
R00.04.0028.00	KIT,DOOR-2SDS36-CENTER&BOTTOM	EA	187.00
R00.04.0029.00	KIT,DOOR-2SDS42-CENTER&BOTTOM	EA	208.00
R00.04.0030.00	KIT,DOOR-2SDS48-CENTER&BOTTOM	EA	251.00
R00.04.0031.00	KIT,DOOR-2SDS54-CENTER&BOTTOM	EA	294.00
R00.04.0032.00	KIT,DOOR-2SDS60-CENTER&BOTTOM	EA	336.00
R00.04.0043.00	KIT,FLIP-UP BACK-3SDS-39-QUIK	EA	163.00
R00.04.0045.00	KIT,FLIP-UP FRONT DOOR 3SDS-39	EA	163.00
R00.04.0046.01	KIT,MDW DOOR ASSY W/HDW-BLACK	EA	89.00
R00.04.0046.02	KIT,MDW DOOR ASSY W/HDW-GRAY	EA	89.00
R00.04.0046.03	KIT,MDW DOOR ASSY W/HDW-RED	EA	89.00
R00.04.0046.04	KIT,MDW DOOR ASSY W/HDW-WHITE	EA	89.00
R00.04.0046.05	KIT,MDW DOOR ASSY W/HDW-BLUE	EA	89.00
R00.04.0046.07	KIT,MDM DOOR ASSY W/HDW-GREEN	EA	89.00
R00.04.0049.00	KIT,FLIP-UP FRONT DOOR 3SDS-27	EA	114.00
R00.04.0050.00	KIT,FLIP-UP BACK DOOR 3SDS-27	EA	114.00
R00.04.0051.00	KIT,FLIP-UP FRONT DOOR 3SDS-33	EA	141.00
R00.04.0052.00	KIT,FLIP-UP BACK DOOR 3SDS-33	EA	141.00
R00.04.0053.00	KIT,FLIP-UP DOOR 3SDH-27	EA	114.00
R00.04.0054.00	KIT,FLIP-UP DOOR 3SDH-33	EA	141.00
R00.04.0055.00	KIT,FLIP-UP DOOR 3SDH-39	EA	163.00
R00.04.0059.00	KIT,FLIP-UP BACK DOOR 3SDS-39	EA	163.00
R00.04.0060.00	KIT,S.S.DOOR ASSY.R.H.FSHC-8	EA	466.00
R00.04.0061.00	KIT,S.S.DOOR ASSY.L.H.FSHC-8	EA	466.00



Replacement Parts Price List in US Dollars

January 1, 2012

Item	Description	Unit of Measure	List Price
R00.04.0064.00	KIT,DOOR-2SDS30-SINGLE/TOPDUAL	EA	168.00
R00.04.0071.00	KIT,DOOR-2SDS30-CENTYER&BOTTOM	EA	168.00
R00.04.0081.00	KIT,HDW-2R2N DRAWER ASSEMBLY	EA	381.00
R00.04.0082.01	KIT,DOOR,FRONT,UP,BLK,BP,2CMWD	EA	551.00
R00.05.0002.00	KIT,STRAINER GASKETS 3CS/FR	EA	15.00
R00.05.0029.00	KIT,SWING POST KFC FRY CENTER	EA	49.00
R00.05.0101.00	KIT,DOOR HINGE W/HARDWARE	EA	35.00
R00.16.135BC.00	KIT,THERMOSTAT W/BENT BULB	EA	111.00
R01.02.002.00	KIT,TANK,SM CM,2 ELEMENT HOLES	EA	790.00
R01.02.003.00	KIT,TANK,SM CM,3 ELEMENT HOLES	EA	815.00
R01.02.007S.00	KIT,TANK,IMP,3 ELEMENT HOLES	EA	1,024.00
R01.02.008S.00	KIT,TANK,IMP,6 ELEMENT HOLES	EA	1,113.00
R01.02.009S.00	KIT,TANK,IMP,9 ELEMENT HOLES	EA	1,247.00
R01.02.031.00	KIT,TANK,LG CM,6 ELEMENT HOLES	EA	890.00
R01.04.001.00	KIT,TANK 3CS,1 ELEMENT HOLE	EA	282.00
R01.04.002.00	KIT,TANK,3CS,2 ELEMENT HOLES	EA	341.00
R01.04.006.00	KIT,TANK,3CS,3 ELEMENT HOLES	EA	388.00
R01.04.008.00	KIT,TANK,FR-5,2 ELE HOLES	EA	404.00
R01.04.017.00	KIT,2 ELEMENT 3CS TANK	EA	341.00
R01.04.018.00	KIT,TANK,FR,3 ELE HOLES &LWCO	EA	369.00
R01.05.001.00	KIT,TANK,S/S MINI CM,3 ELE	EA	682.00
R02.01.025.00	KIT,RELAY,25A,SPDT	EA	55.00
R02.01.029.00	KIT,FLOAT SWITCH WITH HARDWARE	EA	75.00
R02.01.050.00	KIT,RELAY MINI 30A,SPST,24V DC	EA	27.00
R02.01.074.00	KIT,T-STAT PROBE 36"x7"SS CAP	EA	87.00
R02.01.101.00	KIT,ELECTRONIC INF.SWITCH 120V	EA	131.00
R02.01.102.00	KIT,ELEC.INF.SW.240V-GLO-RAY.	EA	131.00
R02.01.165R.00	KIT,ELEC.CONTROLLER	EA	248.00
R02.01.189.00	KIT,T-STAT&PORT,WATER HTR,24V	EA	224.00
R02.01.210.00	KIT,LWCO BOARD 120/240V W/DLAY	EA	102.00
R02.01.212.00	KIT,LWCO BOARD 24V W/DELAY	EA	102.00
R02.01.229.00	KIT,TOASTER CONTROL BOARD W/HL	EA	314.00
R02.01.235.00	KIT,LWCO BOARD 230 VOLT "CE"	EA	151.00
R02.01.244.00	KIT,CONTROL/DISPLAY ASSY-FLOM	EA	405.00
R02.01.253.00	KIT,TIMER BOARD-GRMW SERIES	EA	411.00
R02.01.259.00	KIT,T-STAT CONT,24VDC,W/BEZEL	EA	165.00
R02.01.294.00	KIT,INF.S.S.208-240V,0-100%	EA	153.00
R02.01.297.00	KIT,INF.S.S.120V,0-100%	EA	153.00
R02.03.001.02	KIT,FUSE 1A AGC-2 PACK	EA	2.00
R02.03.005A.02	KIT,FUSE 1A 600V-2 PACK	EA	22.00
R02.03.010.02	KIT,FUSE 35A 600V-2 PACK	EA	32.00
R02.03.011.02	KIT,FUSE 40A 600V-2 PACK	EA	32.00
R02.03.012.02	KIT,FUSE 50A 600V-2 PACK	EA	32.00
R02.03.013.02	KIT,FUSE 1A 600V-2 PACK	EA	22.00
R02.03.014.02	KIT,FUSE 2A 480V-2 PACK	EA	8.00
R02.03.015.02	KIT,FUSE 60A 600V-2 PACK	EA	32.00
R02.03.021.02	KIT,FUSE 1A 600V-2 PACK	EA	32.00
R02.03.030.02	KIT,FUSE 35A 300V-2 PACK	EA	26.00
R02.03.031.02	KIT,FUSE 40A 300V-2 PACK	EA	26.00
R02.03.032.02	KIT,FUSE 50A 300V-2 PACK	EA	26.00



Replacement Parts Price List in US Dollars

January 1, 2012

Item	Description	Unit of Measure	List Price
R02.03.033.02	KIT,FUSE 60A 300V-2 PACK	EA	26.00
R02.03.052.02	KIT,FUSE 15 AMP-TQ-1200-2 PACK	EA	22.00
R02.04.100.00	KIT,ELE 3200W,200V	EA	53.00
R02.04.101.00	KIT,ELE 3300W 208V	EA	53.00
R02.04.102.00	KIT,ELE 3800W,240V	EA	53.00
R02.04.103.00	KIT,ELE 3800W,277V	EA	53.00
R02.04.104.00	KIT,ELE 3200W,220V	EA	53.00
R02.04.105.00	KIT,ELE 3800W,346V	EA	53.00
R02.04.106.00	KIT,ELE,1900W,120V	EA	53.00
R02.04.150.00	KIT,ELEMENT 13500W 208/240V	EA	185.00
R02.04.151.00	KIT,ELEMENT 13500W 380V	EA	185.00
R02.04.152.00	KIT,ELEMENT 13500W 480V	EA	185.00
R02.04.302.00	KIT,ELE,3000W,208V,9 13/16"	EA	33.00
R02.04.303.00	KIT,ELE,3000W,240V,9 13/16"	EA	33.00
R02.04.304.00	KIT,ELE,3000W,346V,9 13/16"	EA	33.00
R02.04.305.00	KIT,ELE,3000W,480V,9 13/16"	EA	33.00
R02.04.306.00	KIT,ELE,3000W,277V,9 13/16"	EA	33.00
R02.04.350.00	KIT,ELE,3500W,208V, 9 13/16"	EA	33.00
R02.04.351.00	KIT,ELE,3500W,240V, 9 13/16"	EA	33.00
R02.04.352.00	KIT,ELE,3500W,480V,9 13/16"	EA	33.00
R02.04.353.00	KIT,ELE,3500W,346V, 9 13/16"	EA	33.00
R02.04.354.00	KIT,ELE,3500W,277V,9 13/16"	EA	33.00
R02.04.400.00	KIT,ELE,4000W,208V,11 1/2"	EA	35.00
R02.04.401.00	KIT,ELE,4000W,240V,11 1/2"	EA	35.00
R02.04.402.00	KIT,ELE,4000W,346V,11 1/2"	EA	35.00
R02.04.404.00	KIT,ELE,4000W,480V,11 1/2"	EA	35.00
R02.04.405.00	KIT,ELE,4000W,277V,11 1/2"	EA	35.00
R02.04.450.00	KIT,ELE,4500W,208V,11 1/2"	EA	35.00
R02.04.451.00	KIT,ELE,4500W,240V,11 1/2"	EA	35.00
R02.04.452.00	KIT,ELE,4500W,346V,11 1/2"	EA	35.00
R02.04.453.00	KIT,ELE,4500W,480V,11 1/2"	EA	35.00
R02.04.454.00	KIT,ELE,4500W,277V,11 1/2"	EA	35.00
R02.04.500.00	KIT,ELE,5000W,208V,11.5"	EA	37.00
R02.04.501.00	KIT,ELE,5000W,240V,11 1/2"	EA	37.00
R02.04.502.00	KIT,ELE,5000W,480V,11 1/2"	EA	37.00
R02.04.510.00	KIT,ELE,5000W,346V,11 1/2"	EA	37.00
R02.04.511.00	KIT,ELE,5000W,277V,11 1/2"	EA	37.00
R02.04.600.00	KIT,ELE,5750W,208V,13 5/16"	EA	41.00
R02.04.600A.00	KIT,ELE,6000W,208V,13 5/16"	EA	41.00
R02.04.601.00	KIT,ELE,6000W,220V,13 5/16"	EA	41.00
R02.04.603.00	KIT,ELE,6000W,240V,13 5/16"	EA	41.00
R02.04.604.00	KIT,ELE,6000W,346V,13 5/16"	EA	41.00
R02.04.605.00	KIT,ELE,6000W,480V,13 5/16"	EA	41.00
R02.04.606.00	KIT,ELE,6000W,277V,13 5/16"	EA	41.00
R02.04.610.00	KIT,ELE,6000W,208V,15"	EA	41.00
R02.04.611.00	KIT,ELE,6000W,240V,15"	EA	41.00
R02.04.612.00	KIT,ELE,6000W,346V,15"	EA	41.00
R02.04.613.00	KIT,ELE,6000W,480V,15"	EA	41.00
R02.04.614.00	KIT,ELE,6000W,277V,15"	EA	41.00
R02.04.632.00	KIT,ELE,6333W,240V,13 5/16"	EA	43.00



Replacement Parts Price List in US Dollars

January 1, 2012

Item	Description	Unit of Measure	List Price
R02.04.634.00	KIT,ELE,6333W,480V,13 5/16"	EA	43.00
R02.04.650.00	KIT,ELE,6500W,208V,15"	EA	43.00
R02.04.651.00	KIT,ELE,6500W,220V,15"	EA	43.00
R02.04.653.00	KIT,ELE,6500W,240V,15"	EA	43.00
R02.04.654.00	KIT,ELE,6500W,346V,15"	EA	43.00
R02.04.655.00	KIT,ELE,6500W,480V,15"	EA	43.00
R02.04.656.00	KIT,ELE,6500W,277V,15"	EA	43.00
R02.04.700.00	KIT,ELE,7500W,208V,15 1/4"	EA	83.00
R02.04.701.00	KIT,ELE,7500W,240V,15 1/4"	EA	83.00
R02.04.702.00	KIT,ELE,7500W,277V	EA	83.00
R02.04.703.00	KIT,ELE,7500W,480V,15 1/4"	EA	83.00
R02.04.704.00	KIT,ELE,7500W,346V,15 1/4"	EA	83.00
R02.04.710.00	KIT,ELE,9000W,208V,15 1/4"	EA	88.00
R02.04.711.00	KIT,ELE,9000W,240V,15 1/4"	EA	88.00
R02.04.713.00	KIT,ELE,9000W,480V,15 1/4"	EA	88.00
R02.04.714.00	KIT,ELE,9000W,346V,15 1/4"	EA	88.00
R02.04.715.00	KIT,ELE,9000W,220V,15 1/4"	EA	88.00
R02.04.731.00	KIT,ELE,9500W,208V,15 1/4"	EA	92.00
R02.04.732.00	KIT,ELE,9500W,220V,15 1/4"	EA	92.00
R02.04.733.00	KIT,ELE,9500W,240V,15 1/4"	EA	92.00
R02.04.734.00	KIT,ELE,9500W,346V,15 1/4"	EA	92.00
R02.04.735.00	KIT,ELE,9500W,480V,15.1/4"	EA	92.00
R02.05.002.00	KIT,ELE,120V,600W,(WATER)	EA	63.00
R02.05.003.00	KIT,ELE,600W,230V,(WATER)	EA	63.00
R02.05.005.00	KIT,ELE,250W,240V,AIR CHAMBER	EA	29.00
R02.05.006.00	KIT,ELE,325W,120V,WATER	EA	47.00
R02.05.007.00	KIT,ELE,1050W,120V,AIR	EA	49.00
R02.05.008E.00	KIT,ELE,AIR,1050W,240V,(EXP)	EA	49.00
R02.05.010.00	KIT,ELE,225W,120V,FLEX BLANKET	EA	113.00
R02.05.011.00	KIT,1050W,120V,AIR ELE,FDW/FSD	EA	49.00
R02.05.012E.00	KIT,ELE,1050W,240V,AIR	EA	49.00
R02.05.013.00	KIT,325W,240V,WATER ELEMENT	EA	47.00
R02.05.013E.00	KIT,ELE,325W,240V,WATER	EA	47.00
R02.05.015E.00	KIT,1050WATT,220V,AIR,ELE,FDW	EA	49.00
R02.05.016E.00	KIT,325WATT 220V WATER ELEMENT	EA	47.00
R02.05.017E.00	KIT,ELEMENT,1050W,220V,AIR	EA	49.00
R02.05.018.00	KIT,ELEMENT,WATER,600W,220V	EA	63.00
R02.05.511E.00	KIT,ELE,1050W,100V,AIR	EA	49.00
R02.05.512E.00	KIT,ELE,325W,100V,WATER	EA	47.00
R02.05.623.00	KIT,ELEMENT,200W,120V,MDW	EA	30.00
R02.05.626.00	KIT,ELE,1000W,120V,AIR	EA	49.00
R02.05.702.00	KIT,ELE,1050W,120V,AIR	EA	49.00
R02.06.001F.00	KIT,3000 WATT 240 VOLT ELEMENT	EA	115.00
R02.06.003F.00	KIT,4000/3000W 240/208 ELEMENT	EA	115.00
R02.06.004F.00	KIT,4000 WATT 208V ELEMENT	EA	115.00
R02.06.228.00	KIT,DUAL ELE,1625/750W,208V	EA	92.00
R02.06.229.00	KIT,DUAL ELE,1625/750W,240V	EA	92.00
R02.06.300.00	KIT,ELE,3000W,208V	EA	59.00
R02.06.301.00	KIT,ELE,3000W,240V	EA	59.00
R02.06.302.00	KIT,ELE,3000W,440V	EA	59.00



Replacement Parts Price List in US Dollars

January 1, 2012

Item	Description	Unit of Measure	List Price
R02.06.303.00	KIT,ELEMENT,3000 WATT,480 VOLT	EA	59.00
R02.06.304.00	KIT,ELEMENT,1900 WATT 208 VOLT	EA	59.00
R02.06.350.00	KIT,ELEMENT 4000W,350 VOLT	EA	59.00
R02.06.450.00	KIT,ELE,4500W,208V	EA	59.00
R02.06.451.00	KIT,ELE,4500W,240V	EA	59.00
R02.06.452.00	KIT,ELE,4500W,480V	EA	59.00
R02.06.500.00	KIT,ELEMENT,1625W,208V-AWD	EA	75.00
R02.06.501.00	KIT,ELEMENT,1625W,240V-AWD	EA	75.00
R02.06.603.00	KIT,ELEMENT,2000W,277V	EA	60.00
R02.07.001.00	KIT,ELEMENT,CERAMIC 750W,120V	EA	141.00
R02.07.002.00	KIT,CERAMIC ELE-2PCS-500W-120V	EA	255.00
R02.08.001D.00	KIT,ELE,GR24,350W,120V (.260)	EA	31.00
R02.08.002D.00	KIT,ELE,GR24,350W,208V(.260)	EA	31.00
R02.08.003E.00	KIT,ELE,GR24,350W,240V(.260)	EA	31.00
R02.08.004D.00	KIT,ELE,GR36,575W,120V,(.260)	EA	36.00
R02.08.005D.00	KIT,ELE,GR36,575W,208V,(.260)	EA	36.00
R02.08.006D.00	KIT,ELE,GR36,575W,240V,(.260)	EA	36.00
R02.08.006E.00	KIT,ELE,GR36,575W,240V.26(EXP)	EA	36.00
R02.08.007D.00	KIT,ELE,GR42,675W,120V,(.260)	EA	38.00
R02.08.008D.00	KIT,ELE,GR42,675W,208V,(.260)	EA	38.00
R02.08.009D.00	KIT,ELE,GR42,675W,240V,(.260)	EA	38.00
R02.08.009E.00	KIT,ELE,GR42,675W,240V.26(EXP)	EA	38.00
R02.08.010A.00	KIT,ELEMENT,COILED 800W 120V	EA	52.00
R02.08.010D.00	KIT,ELE,GR48,800W,120V (.260)	EA	43.00
R02.08.011D.00	KIT,ELE,GR48,800W,208V,(.260)	EA	43.00
R02.08.011F.00	KIT,ELEMENT,800W,220V,COILED	EA	52.00
R02.08.012A.00	KIT,ELEMENT,COILED,800W,220V	EA	52.00
R02.08.012D.00	KIT,ELE,GR48,800W,240V,(.260)	EA	43.00
R02.08.012E.00	KIT,ELE,GR48,800W,240V.26(EXP)	EA	43.00
R02.08.013D.00	KIT,ELE,GR60,1050W,120V,(.260)	EA	52.00
R02.08.014D.00	KIT,ELE,GR60,1050W,208V,(.260)	EA	52.00
R02.08.015D.00	KIT,ELE,GR60,1050W,240V,(.260)	EA	52.00
R02.08.015E.00	KIT,ELE,GR60,1050W,240V.26 EXP	EA	52.00
R02.08.016D.00	KIT,ELE,GR72,1275W,120V(.260)	EA	57.00
R02.08.017D.00	KIT,ELE,GR72,1275W,208V,(.260)	EA	57.00
R02.08.018D.00	KIT,ELE,GR72,1275W,240V,(.260)	EA	57.00
R02.08.018E.00	KIT,ELE,GR72,1275W,240V.26 EXP	EA	57.00
R02.08.019D.00	KIT,ELE,GR84,1500W,120V,(.260)	EA	61.00
R02.08.020D.00	KIT,ELE,GR84,1500W,208V,(.260)	EA	61.00
R02.08.021E.00	KIT,ELE,GR84,1500W,240V.26 EXP	EA	61.00
R02.08.022D.00	KIT,ELE,GR96,1725W,120V,(.260)	EA	68.00
R02.08.023D.00	KIT,ELE,GR96,1725W,208V,(.260)	EA	68.00
R02.08.024D.00	KIT,ELE,GR96,1725W,240V,(.260)	EA	68.00
R02.08.024E.00	KIT,ELE,GR96,1725W,240V.26 EXP	EA	68.00
R02.08.025D.00	KIT,ELE,GR54,925W,120V,(.260)	EA	46.00
R02.08.026D.00	KIT,ELE,GR30,450W,120V,(.260)	EA	35.00
R02.08.027D.00	KIT,ELE,GR30,450W,208V,(.260)	EA	35.00
R02.08.028D.00	KIT,ELE,GR30,450W,240V,(.260)	EA	35.00
R02.08.028E.00	KIT,ELE,GR30,450W,240V.26(EXP)	EA	35.00
R02.08.029D.00	KIT,ELE,GR54,925W,208V,(.260)	EA	46.00



Replacement Parts Price List in US Dollars

January 1, 2012

Item	Description	Unit of Measure	List Price
R02.08.030D.00	KIT,ELE,GR54,925W,240V,(.260)	EA	46.00
R02.08.030E.00	KIT,ELE,GR54,925W,240V.26(EXP)	EA	46.00
R02.08.031D.00	KIT,ELE,GR18,250W,120V,(.260)	EA	28.00
R02.08.032D.00	KIT,ELE,GR66,1160W,120V,(.260)	EA	54.00
R02.08.033D.00	KIT,ELE,GR66,1160W,208V,(.260)	EA	54.00
R02.08.034D.00	KIT,ELE,GR66,1160W,240V,(.260)	EA	54.00
R02.08.034E.00	KIT,ELE,GR66,1160W,240V.26 EXP	EA	54.00
R02.08.035D.00	KIT,ELE,GR18,250W,240V,(.260)	EA	28.00
R02.08.035E.00	KIT,ELE,GR18,250W,240V.26 EXP	EA	28.00
R02.08.036D.00	KIT,ELE,GR24,400W,120V,(.260)	EA	31.00
R02.08.037E.00	KIT,ELE,GR18,250W,220V.26(EXP)	EA	28.00
R02.08.039E.00	KIT,ELE,GR42,675W,220V.26(EXP)	EA	38.00
R02.08.040D.00	KIT,ELE,GR18,250W,208V,(.260)	EA	28.00
R02.08.041E.00	KIT,ELE,GR24,350W,220V.26 EXP	EA	31.00
R02.08.042E.00	KIT,ELE,GR30,450W,220V.26(EXP)	EA	35.00
R02.08.043E.00	KIT,ELE,GR36,575W,220V.26(EXP)	EA	36.00
R02.08.045E.00	KIT,ELE,GR48,800W,220V,(.260)	EA	43.00
R02.08.046E.00	KIT,ELE,GR54,925W,220V,(.260)	EA	46.00
R02.08.047E.00	KIT,ELE,GR60,1050W,220V,(.260)	EA	52.00
R02.08.049E.00	KIT,ELE,GR72,1275W,220V(.260)	EA	57.00
R02.08.050E.00	KIT,ELE,GR84,1500W,220V.26 EXP	EA	61.00
R02.08.051E.00	KIT,ELE,GR96,1725W,220V.26 EXP	EA	68.00
R02.08.052D.00	KIT,ELE,GR41,665W,120V,(.260)	EA	41.00
R02.08.053D.00	KIT,ELE,GR52,885W,120V,(.260)	EA	46.00
R02.08.090.00	KIT,ELEMENT,AIR,875W,120V	EA	37.00
R02.08.091.00	KIT,ELEMENT,AIR,600W,120V	EA	37.00
R02.08.092E.00	KIT,ELEMENT,AIR,600W,220V,EXP	EA	37.00
R02.08.093E.00	KIT,ELEMENT,AIR,600W,240V	EA	37.00
R02.08.094E.00	KIT,ELEMENT,AIR,875W,220V,EXP	EA	37.00
R02.08.095E.00	KIT,ELEMENT,AIR,875W,240V	EA	37.00
R02.08.101D.00	KIT,ELE,GR24,500W,120V,(.260)	EA	33.00
R02.08.102D.00	KIT,ELE,GR24,500W,208V,(.260)	EA	33.00
R02.08.103D.00	KIT,ELE,GR24,500W,240V,(.260)	EA	33.00
R02.08.103E.00	KIT,ELE,GR24,500W,240V,(.260)	EA	33.00
R02.08.104D.00	KIT,ELE,GR36,800W,120V,(.260)	EA	37.00
R02.08.105D.00	KIT,ELE,GR36,800W,208V,(.260)	EA	37.00
R02.08.106D.00	KIT,ELE,GR36,800W,240V,(.260)	EA	37.00
R02.08.106E.00	KIT,ELE,GR36,800W,240V.26(EXP)	EA	37.00
R02.08.107D.00	KIT,ELE,GR42,950W,120V,(.260)	EA	41.00
R02.08.108D.00	KIT,ELE,GR42,950W,208V,(.260)	EA	41.00
R02.08.109D.00	KIT,ELE,GR42,950W,240V,(.260)	EA	41.00
R02.08.109E.00	KIT,ELE,GR42,950W,240V.26(EXP)	EA	41.00
R02.08.110D.00	KIT,ELE,GR48,1100W,120V,(.260)	EA	44.00
R02.08.111D.00	KIT,ELE,GR48,1100W,208V,(.260)	EA	44.00
R02.08.112D.00	KIT,ELE,GR48,1100W,240V,(.260)	EA	44.00
R02.08.112E.00	KIT,ELE,GR48,1100W,240V,(.260)	EA	44.00
R02.08.113D.00	KIT,ELE,GR60,1400W,120V,(.260)	EA	54.00
R02.08.114D.00	KIT,ELE,GR60,1400W,208V,(.260)	EA	54.00
R02.08.115D.00	KIT,ELE,GR60,1400W,240V,(.260)	EA	54.00
R02.08.115E.00	KIT,ELE,GR60,1400W,240V,(.260)	EA	54.00



Replacement Parts Price List in US Dollars

January 1, 2012

Item	Description	Unit of Measure	List Price
R02.08.116D.00	KIT,ELE,GR72,1725W,120V,(.260)	EA	59.00
R02.08.117D.00	KIT,ELE,GR72,1725W,208V,(.260)	EA	59.00
R02.08.118D.00	KIT,ELE,GR72,1725W,240V,(.260)	EA	59.00
R02.08.118E.00	KIT,ELE,GR72,1725W,240V,(.260)	EA	59.00
R02.08.120D.00	KIT,ELE,GR84,2050W,208V,(.260)	EA	62.00
R02.08.121D.00	KIT,ELE,GR84,2050W,240V,(.260)	EA	62.00
R02.08.121E.00	KIT,ELE,GR84,2050W,240V.26 EXP	EA	62.00
R02.08.123D.00	KIT,ELE,GR96,2400W,208V,(.260)	EA	71.00
R02.08.124D.00	KIT,ELE,GR96,2400W,240V,(.260)	EA	71.00
R02.08.124E.00	KIT,ELE,GR96,2400W,240V.26 EXP	EA	71.00
R02.08.125D.00	KIT,ELE,GR54,1250W,120V,(.260)	EA	47.00
R02.08.126D.00	KIT,ELE,GR18,350W,120V,(.260)	EA	32.00
R02.08.127D.00	KIT,ELE,GR30,660W,120V,(.260)	EA	36.00
R02.08.128D.00	KIT,ELE,GR30,660W,208V,(.260)	EA	36.00
R02.08.129D.00	KIT,ELE,GR30,660W,240V,(.260)	EA	36.00
R02.08.129E.00	KIT,ELE,GR30,660W,240V.26(EXP)	EA	36.00
R02.08.130D.00	KIT,ELE,GR54,1250W,208V,(.260)	EA	47.00
R02.08.131D.00	KIT,ELE,GR54,1250W,240V,(.260)	EA	47.00
R02.08.131E.00	KIT,ELE,GR54,1250W,240V.26 EXP	EA	47.00
R02.08.132D.00	KIT,ELE,GR66,1560W,120V,(.260)	EA	57.00
R02.08.133D.00	KIT,ELE,GR66,1560W,208V,(.260)	EA	57.00
R02.08.134D.00	KIT,ELE,GR66,1560W,240V,(.260)	EA	57.00
R02.08.134E.00	KIT,ELE,GR66,1560W,240V.26 EXP	EA	57.00
R02.08.135D.00	KIT,ELE,GR18,350W,240V,(.260)	EA	32.00
R02.08.135E.00	KIT,ELE,GR18,350W,240V.26 EXP	EA	32.00
R02.08.136E.00	KIT,ELE,GR24,500W,220V,(.260)	EA	33.00
R02.08.137D.00	KIT,ELE,GR18,350W,208V,(.260)	EA	32.00
R02.08.138E.00	KIT,ELE,GR18,350W,220V,.26 EXP	EA	32.00
R02.08.139E.00	KIT,ELE,GR30,660W,220V,(.260)	EA	36.00
R02.08.140E.00	KIT,ELE,GR36,800W,220V,(.260)	EA	37.00
R02.08.141E.00	KIT,ELE,GR42,950W,220V.26(EXP)	EA	41.00
R02.08.142E.00	KIT,ELE,GR48,1100W,220V,(.260)	EA	44.00
R02.08.143E.00	KIT,ELE,GR54,1250W,220V,(.260)	EA	47.00
R02.08.144E.00	KIT,ELE,GR60,1400W,220V.26 EXP	EA	54.00
R02.08.145E.00	KIT,ELE,GR66,1560W,220V.26 EXP	EA	57.00
R02.08.148E.00	KIT,ELE,GR72,1725W,220V,(.260)	EA	59.00
R02.08.149E.00	KIT,ELE,GR84,2050W,220V.26 EXP	EA	62.00
R02.08.150E.00	KIT,ELE,GR96,2400W,220V.26 EXP	EA	71.00
R02.08.202D.00	KIT,ELE,GR30,350W,120V,(.260)	EA	36.00
R02.08.204D.00	KIT,ELE,GR42,550W,120V,(.260)	EA	37.00
R02.08.205D.00	KIT,ELE,GR48,650W,120V,(.260)	EA	44.00
R02.08.206D.00	KIT,ELE,GR54,750W,120V,(.260)	EA	47.00
R02.08.207D.00	KIT,ELE,GR60,850W,120V,(.260)	EA	54.00
R02.08.208D.00	KIT,ELE,GR66,950W,120V,(.260)	EA	57.00
R02.08.209D.00	KIT,ELE,GR72,1025W,120V,(.260)	EA	59.00
R02.08.210D.00	KIT,ELE,GR84,1200W,120V,(.260)	EA	62.00
R02.08.211D.00	KIT,ELE,GR96,1400W,120V,(.260)	EA	71.00
R02.08.212D.00	KIT,ELE,GR51,360W,120V,(.260)	EA	46.00
R02.08.214D.00	KIT,ELE,GR39,225W,120V,(.260)	EA	37.00
R02.08.217D.00	KIT,ELEMENT,GR-45,325W,120V	EA	38.00



Replacement Parts Price List in US Dollars

January 1, 2012

Item	Description	Unit of Measure	List Price
R02.08.219D.00	KIT,ELE,SD36,300W,120V,(.260)	EA	37.00
R02.08.222D.00	KIT,ELE,GRSD30,200W,120V,.260	EA	35.00
R02.08.223D.00	KIT,ELE,GRSD36,250W,120V,.260	EA	36.00
R02.08.224D.00	KIT,ELE,GRSD41,280W,120V,.260	EA	38.00
R02.08.225D.00	KIT,ELE,GRSD24,180W,120V,.260	EA	33.00
R02.08.226D.00	KIT,ELE,GRSD30,240W,120V,.260	EA	36.00
R02.08.228E.00	KIT,ELE,GRSD36,280W,240V,.260	EA	37.00
R02.08.229E.00	KIT,ELE,GR41,315W,240V,(.260)	EA	45.00
R02.08.230E.00	KIT,ELE,GRSD52,400W,240V,.260	EA	45.00
R02.08.231D.00	KIT,ELE,GR33,170W,120V,.260	EA	37.00
R02.08.232E.00	KIT,ELE,GRSD30,225W,240V(.260)	EA	36.00
R02.08.240D.00	KIT,ELE,GR48,365W,120V,(.260)	EA	45.00
R02.08.250E.00	KIT,ELE,GR30,350W,220V,.26 EXP	EA	36.00
R02.08.251.00	KIT, HEATING ELEMENT 350W 240V	EA	36.00
R02.08.254D.00	KIT,ELE,GR42,450W,240V,(.260)	EA	41.00
R02.08.256E.00	KIT,ELE,GR54,750W,220V.26(EXP)	EA	47.00
R02.08.257E.00	KIT,ELE,GR54,750W,240V.26(EXP)	EA	47.00
R02.08.258D.00	KIT,ELE,GR18,165W,120V,(.260)	EA	32.00
R02.08.262D.00	KIT,ELE,GRSD60,450W,120V,.260	EA	54.00
R02.08.264E.00	KIT,ELE,GRSD60,450W,240V,(.26)	EA	54.00
R02.08.265E.00	KIT,ELE,GR45,325W,240V.26(EXP)	EA	44.00
R02.08.269D.00	KIT,ELE,GR2SD-30,225W,120V,.26	EA	36.00
R02.08.270D.00	KIT,ELE,GR2SD-36,275W,120V,.26	EA	37.00
R02.08.271D.00	KIT,ELE,GR2SD-41,325W,120V,.26	EA	41.00
R02.08.272D.00	KIT,ELE,GR2SD-48,375W,120V,.26	EA	44.00
R02.08.273D.00	KIT,ELE,2SD54,425W,120V,(.260)	EA	47.00
R02.08.274D.00	KIT,ELE,GR2SD-60,475W,120V,.26	EA	54.00
R02.08.275D.00	KIT,ELE,2SD-24,175W,120V,(.26)	EA	31.00
R02.08.300D.00	KIT,ELEMENT 390W 120V,(.260)	EA	33.00
R02.08.301D.00	KIT,ELEMENT 550 WATT, 120 VOLT	EA	33.00
R02.08.302D.00	KIT,ELE,GRHW,500W,120V,.260	EA	40.00
R02.08.303E.00	KIT,ELE,GRHW UHWD,500W,240V	EA	35.00
R02.08.306D.00	KIT,ELE,GRHW,350W,120V,(.260)	EA	36.00
R02.08.400.00	KIT DUAL WATT ELE,130/195W,115	EA	38.00
R02.08.401.00	KIT, DUAL WATT ELE130/195W,240	EA	38.00
R02.08.530.00	KIT,ELE,GRSD24,175W,220V,.260	EA	33.00
R02.08.531E.00	KIT,ELE,GRSDS/DH-225W,220V ELE	EA	36.00
R02.08.532E.00	KIT,ELE,275W,220V,.260(EXP)	EA	37.00
R02.08.533E.00	KIT,ELE,325W,220V,.26(EXP)	EA	41.00
R02.08.555D.00	KIT,ELE,GRJW-2,300W,120V,(.26)	EA	36.00
R02.08.560.00	KIT,ELEMENT GR30 350WATT 100V	EA	35.00
R02.08.561E.00	KIT,ELE,GR24,500W,100V.26(EXP)	EA	33.00
R02.08.562E.00	KIT,ELEMENT GR30 660WATT 100V	EA	36.00
R02.08.563E.00	KIT,ELE,GR36,800W,100V.26(EXP)	EA	37.00
R02.08.564E.00	KIT,ELEMENT GR42 950 WATT 100V	EA	41.00
R02.08.566E.00	KIT,ELEMENT GR48 1100W 100V	EA	44.00
R02.08.569.01	KIT,AIR ELEMENT,600W,120V	EA	44.00
R02.08.569.07	KIT,AIR ELEMENT,800W,120V	EA	40.00
R02.08.570E.02	KIT,1050 WATT 220V AIR ELEMENT	EA	49.00
R02.08.570E.03	KIT,1050 WATT 240V AIR ELEMENT	EA	49.00



Replacement Parts Price List in US Dollars

January 1, 2012

Item	Description	Unit of Measure	List Price
R02.08.574E.00	KIT,ELEMENT,AIR,800W,240V	EA	52.00
R02.08.581.01	KIT,ELEMENT,HWB-RECT,750W,120V	EA	66.00
R02.08.581.02	KIT,ELEMENT,HWB,REC,1200W,120V	EA	68.00
R02.08.589.00	KIT,ELE,GRM-18,450W,120V,.260	EA	34.00
R02.08.590.00	KIT,ELE,GRM-18,450W,208V,.260	EA	34.00
R02.08.591.00	KIT,ELE,GRM-18,450W,240V,.260	EA	34.00
R02.08.592.00	KIT,ELE,GRM-24,650W,120V,.260	EA	36.00
R02.08.593.00	KIT,ELE,GRM-24,650W,208V,.260	EA	36.00
R02.08.594.00	KIT,ELE,GRM-24,650W,240V,.260	EA	36.00
R02.08.595.00	KIT,ELE,GRM-30,825W,120V,.260	EA	37.00
R02.08.596.00	KIT,ELE,GRM-30,825W,208V,.260	EA	37.00
R02.08.597.00	KIT,ELE,GRM-30,825W,240V,.260	EA	37.00
R02.08.598.00	KIT,ELE,GRM-36,1000W,120V,.260	EA	38.00
R02.08.599.00	KIT,ELE,GRM-36,1000W,208V,.260	EA	38.00
R02.08.600.00	KIT,ELE,GRM-36,1000W,240V,.260	EA	38.00
R02.08.601.00	KIT,ELE,GRM-42,1175W,120V,.260	EA	43.00
R02.08.602.00	KIT,ELE,GRM-42,1175W,208V,.260	EA	43.00
R02.08.603.00	KIT,ELE,GRM-42,1175W,240V,.260	EA	43.00
R02.08.604.00	KIT,ELE,GRM-48,1300W,120V,.260	EA	45.00
R02.08.605.00	KIT,ELE,GRM-48,1300W,208V,.260	EA	45.00
R02.08.606.00	KIT,ELE,GRM-48,1300W,240V,.260	EA	45.00
R02.08.607.00	KIT,ELE,GRM-54,1500W,120V,.260	EA	48.00
R02.08.608.00	KIT,ELE,GRM-54,1500W,208V,.260	EA	48.00
R02.08.609.00	KIT,ELE,GRM-54,1500W,240V,.260	EA	48.00
R02.08.610.00	KIT,ELE,GRM-60,1700W,120V,.260	EA	55.00
R02.08.611.00	KIT,ELE,GRM-60,1700W,208V,.260	EA	55.00
R02.08.612.00	KIT,ELE,GRM-60,1700W,240V,.260	EA	55.00
R02.08.613.00	KIT,ELE,GRM-66,1875W,208V,.260	EA	59.00
R02.08.614.00	KIT,ELE,GRM-66,1875W,240V,.260	EA	59.00
R02.08.615.00	KIT,ELE,GRM-72,2075W,208V,.260	EA	61.00
R02.08.616.00	KIT,ELE,GRM-72,2075W,240V,.260	EA	61.00
R02.08.617.00	KIT,ELE,GRM-84,2400W,208V,.260	EA	66.00
R02.08.618.00	KIT,ELE,GRM-84,2400W,240V,.260	EA	66.00
R02.08.619.00	KIT,ELE,GRM-96,2675W,208V,.260	EA	73.00
R02.08.620.00	KIT,ELE,GRM-96,2675W,240V,.260	EA	73.00
R02.08.623.00	KIT,ELE,AIR,1500W,120V,FSHC-17	EA	167.00
R02.08.625.01	KIT,AIR ELEMENT 425W 120V HC-8	EA	57.00
R02.08.633E.00	KIT,ELE,GRCMW,350W,240V,(.260)	EA	36.00
R02.08.644.00	KIT,ELE,GMFFL,500W,230 VOLT	EA	33.00
R02.08.645.00	KIT,ELE,GMFFL,500W,120 VOLT	EA	33.00
R02.09.001.00	KIT,ELEMENT 200W 120V,2SLICE	EA	20.00
R02.09.002.00	KIT,ELEMENT 200W 104V,2 SLICE	EA	20.00
R02.09.003.00	KIT,ELEMENT 200W 190V,2 SLICE	EA	20.00
R02.09.004.00	KIT,ELEMENT 250W 120V,2 SLICE	EA	20.00
R02.09.005.00	KIT,ELEMENT 250W 104V,2 SLICE	EA	20.00
R02.09.007.00	KIT,ELEMENT 200W 60V,2 SLICE	EA	20.00
R02.09.013.00	KIT,ELEMENT 325W 104V,2 SLICE	EA	20.00
R02.09.014.00	KIT,ELEMENT 325W 120V,2 SLICE	EA	20.00
R02.09.015.00	KIT,ELEMENT 330W 104V,2 SLICE	EA	20.00
R02.09.016.00	KIT,ELEMENT 330W 120V,3 SLICE	EA	23.00



Replacement Parts Price List in US Dollars

January 1, 2012

Item	Description	Unit of Measure	List Price
R02.09.017.00	KIT,ELEMENT 250W 104V,3 SLICE	EA	23.00
R02.09.018.00	KIT,ELEMENT 250W 120V,3 SLICE	EA	23.00
R02.09.019.00	KIT,ELEMENT 125W 120V,3 SLICE	EA	23.00
R02.09.020.00	KIT,ELEMENT 125W 104V,3 SLICE	EA	23.00
R02.09.024.00	KIT,ELEMENT 250W 60V,2 SLICE	EA	20.00
R02.09.027.00	KIT,ELEMENT 250W 190V,2 SLICE	EA	20.00
R02.09.030.00	KIT,ELEMENT 200W 120V,TQ	EA	20.00
R02.09.031.00	KIT,ELEMENT 325W 120V,TQ	EA	20.00
R02.09.035.00	KIT,ELEMENT 330W 110V,3 SLICE	EA	23.00
R02.09.036.00	KIT,ELEMENT 250W 110V,3 SLICE	EA	23.00
R02.09.037.00	KIT,ELEMENT 200W 208V,TQ	EA	20.00
R02.09.038.00	KIT,ELEMENT 200W 220V,TQ	EA	20.00
R02.09.039.00	KIT,ELEMENT 200W 240V,TQ	EA	20.00
R02.09.040.00	KIT,ELEMENT 325W 208V,TQ	EA	20.00
R02.09.041.00	KIT,ELEMENT 325W 220V,TQ	EA	20.00
R02.09.042.00	KIT,ELEMENT 325W 240V,TQ	EA	20.00
R02.09.044.00	KIT,ELEMENT 350W 240V,TQ	EA	20.00
R02.09.045.00	KIT,ELEMENT 125W 110V,3 SLICE	EA	23.00
R02.09.047.00	KIT,ELEMENT 250W 120V,TQ	EA	20.00
R02.09.048.00	KIT,ELEMENT 250W 208V,TQ	EA	20.00
R02.09.050.00	KIT,ELEMENT 250W 240V,TQ	EA	20.00
R02.09.051.00	KIT,ELEMENT 275W,120V,TQ	EA	20.00
R02.09.052.00	KIT,ELEMENT 275W 208V,TQ	EA	20.00
R02.09.053.00	KIT,ELEMENT 275W 230V,TQ	EA	20.00
R02.09.054.00	KIT,ELEMENT 275W 240V,TQ	EA	20.00
R02.09.056.00	KIT,ELEMENT 200W 115V, 2 SLICE	EA	20.00
R02.09.057.00	KIT,ELEMENT 250W 115V, 2 SLICE	EA	20.00
R02.09.058.00	KIT,ELEMENT 325W 115V,2 SLICE	EA	20.00
R02.09.059.00	KIT,ELEMENT 125W 115V,3 SLICE	EA	23.00
R02.09.060.00	KIT,ELEMENT 250W 115V,3 SLICE	EA	23.00
R02.09.061.00	KIT,ELEMENT 330W 115V,3 SLICE	EA	23.00
R02.09.062.00	KIT,ELEMENT 375W 240V,TQ	EA	20.00
R02.09.063.00	KIT,ELEMENT 375W 208V,TQ	EA	20.00
R02.09.064.00	KIT,ELEMENT 375W 220V,TQ	EA	20.00
R02.09.065.00	KIT,ELEMENT 470W 120V,3 SLICE	EA	23.00
R02.09.200E.00	KIT,ELEM.200W 110V 2 SLICE"CE"	EA	23.00
R02.09.201E.00	KIT,ELEM.250W 110V 2 SLICE"CE"	EA	23.00
R02.09.202E.00	KIT,ELEM.250W 110V 3 SLICE"CE"	EA	23.00
R02.09.203E.00	KIT,ELEMENT 200W 220V,TQ,"CE"	EA	23.00
R02.09.204E.00	KIT,ELEMENT 250W 220V,TQ,"CE"	EA	23.00
R02.09.205E.00	KIT,ELEMENT 275W 220V,TQ,"CE"	EA	23.00
R02.09.206E.00	KIT,ELEMENT 325W 220V,TQ,"CE"	EA	23.00
R02.09.207E.00	KIT,ELEMENT 200W,120V,2/S,"CE"	EA	23.00
R02.09.208E.00	KIT,ELEMENT 250W,120V,2/S,"CE"	EA	23.00
R02.09.209E.00	KIT,ELEM.325W,120V,2 SLICE"CE"	EA	23.00
R02.09.210E.00	KIT,ELEM.250W 120V,3 SLICE"CE"	EA	25.00
R02.09.211.00	KIT,ELEM.330W 120V,3 SLICE"CE"	EA	25.00
R02.09.212.00	KIT,ELEM.470W 120V,3 SLICE"CE"	EA	25.00
R02.09.212E.00	KIT,ELEM.470W 120V 3 SLICE"CE"	EA	25.00
R02.09.213.00	KIT,ELEM.125W 120V,3 SLICE"CE"	EA	25.00



Replacement Parts Price List in US Dollars

January 1, 2012

Item	Description	Unit of Measure	List Price
R02.09.214E.00	KIT,ELEMENT,200W,240V,TQ,"CE"	EA	23.00
R02.09.215E.00	KIT,ELEMENT,250W,240V,TQ,"CE"	EA	23.00
R02.09.216E.00	KIT,ELEMENT 275W 240V,TQ,"CE"	EA	23.00
R02.09.217E.00	KIT,ELEMENT 325W 240V,TQ,"CE"	EA	23.00
R02.09.218E.00	KIT,ELEMENT 350W 240V,TQ,"CE"	EA	23.00
R02.09.219.00	KIT,ELEMENT 375W 240V,TQ,"CE"	EA	23.00
R02.09.221E.00	KIT,ELEM.330W 110V,3 SLICE"CE"	EA	25.00
R02.09.222E.00	KIT,ELEM.470W 110V,3 SLICE"CE"	EA	25.00
R02.09.225E.00	KIT,ELEMENT 200W,120V,TQ,"CE"	EA	29.00
R02.09.226E.00	KIT,ELEMENT 200W 101V,TQ,"CE"	EA	29.00
R02.09.227E.00	KIT,ELEMENT 275W 139V,TQ,"CE"	EA	29.00
R02.09.228E.00	KIT,ELEMENT,350W,120V,TQ,"CE"	EA	29.00
R02.09.229.00	KIT,ELEMENT 325W 80V,TQ,"CE"	EA	29.00
R02.09.230.00	KIT,ELEMENT 325W 149V,TQ,"CE"	EA	29.00
R02.09.231.00	KIT,ELEMENT 200W 91V,TQ,"CE"	EA	29.00
R02.09.232.00	KIT,ELEMENT 275W 120V,TQ,"CE"	EA	29.00
R02.09.278.00	KIT,HEAT ELEM,OUTER,340W,TPU	EA	8.00
R02.09.279.00	KIT,HEAT ELEM,INNER,432W,TPU	EA	8.00
R02.11.013.00	KIT,BLANK BOOSTER FLANGE	EA	25.00
R02.12.001.00	KIT,MOTOR,BLOWER&CORD 120V60z	EA	107.00
R02.12.003.00	KIT,BLOWER MOTOR-FS&FSHC-120V	EA	240.00
R02.12.012.00	KIT,BLOWER MOTOR FS-230V 50-60	EA	240.00
R02.12.020.00	KIT,60HZ GEARMOTOR 6 RPM,208V	EA	156.00
R02.12.021.00	KIT,60HZ GEARMOTOR 6 RPM,230V	EA	156.00
R02.12.024.00	KIT,60HZ GEARMOTOR 6 RPM,115V	EA	156.00
R02.12.025.00	KIT,50HZ GEARMTR PF 6RPM,240V	EA	156.00
R02.12.052.00	KIT,EXHAUST BLOWER PMG 100&200	EA	208.00
R02.12.066.00	KIT,BLOWER MOTOR 120V FSHC-CB	EA	172.00
R02.12.066.01	KIT,BLOWER MOTOR 230V 50/60 HZ	EA	172.00
R02.12.067.00	KIT,BLOWER MOTOR & BLADE 120V	EA	110.00
R02.12.086.00	KIT,BLOWER FAN-TWIN,120V,60Hz	EA	261.00
R02.12.086.01	KIT,BLOWER FAN-TWIN,230V,50/60	EA	261.00
R02.12.098.00	KIT,BLOWER & BLADES,120 VOLT	EA	227.00
R02.12.106.00	KIT,BLOWER W/BLADES, 220/240V	EA	227.00
R02.13.100.00	KIT,100 OHM RHEOSTAT,25W	EA	79.00
R02.13.101.00	KIT, 75 OHM RHEOSTAT, 120 VOLT	EA	79.00
R02.13.111.00	KIT, 200 OHM RHEOSTAT, 25 WATT	EA	79.00
R02.13.125.00	KIT,250 OHM WIREWOUND RHEO,25W	EA	79.00
R02.13.346.00	KIT,PROX SWITCHES-FSD & FDWD	EA	29.00
R02.15.030.00	KIT,TERMINAL BLOCK 3 POLE "CE"	EA	11.00
R02.15.035.00	KIT,TERMINAL BLOCK-3 POLE-"CE"	EA	20.00
R02.15.045.00	KIT,TERMINAL BLOCK-2 POLE	EA	17.00
R02.15.046.00	KIT,TERMINAL BLOCK 3-POLE	EA	28.00
R02.15.047.00	KIT,TERMINAL BLOCK-4 POLE	EA	21.00
R02.15.048.00	KIT, TERMINAL BLOCK-5 POLE	EA	31.00
R02.15.049.00	KIT,TERMINAL BLOCK,8 POLE	EA	20.00
R02.16.029.00	KIT,THERMOSTAT W/EXPOSED DISC	EA	22.00
R02.16.036.00	KIT,HIGH LIMIT DISC	EA	50.00
R02.16.039.00	KIT,T-STAT CONTROL,DRY,82-200F	EA	64.00
R02.16.046.00	KIT,THERMOSTAT & KNOB, HDW	EA	81.00



Replacement Parts Price List in US Dollars

January 1, 2012

Item	Description	Unit of Measure	List Price
R02.16.057.00	KIT,TID SS LED FAR	EA	141.00
R02.16.058.00	KIT,TID SS LED CEL	EA	141.00
R02.16.060.00	KIT,T-STAT MECH,DRY,133-450	EA	62.00
R02.16.060A.00	KIT,THERMOSTAT CONTROL, QW-6	EA	64.00
R02.16.065.00	KIT,T-STAT MECH DRY 175F.	EA	61.00
R02.16.066.00	KIT,T-STAT CONTROL-DRY, 253F	EA	60.00
R02.16.068.00	KIT,T-STAT CONTROL & PROBE-PMG	EA	172.00
R02.16.069.00	KIT,TEMP.CONTROL PROBE,PMG'S	EA	82.00
R02.16.073.00	KIT,THERMO DISC 168 DEG.F.	EA	47.00
R02.16.107.00	KIT,HIGH LIMIT,SURFACE,95F N/O	EA	60.00
R02.16.117.00	KIT,HIGH LIMIT DISK 300 F.	EA	45.00
R02.16.118.00	KIT,SURFACE HIGH LIMIT 250 F.	EA	28.00
R02.16.154.00	KIT,THERMAL DISK	EA	23.00
R02.17.002.00	KIT, TRANSFORMER 480/600-240V	EA	109.00
R02.17.003.00	KIT, TRANSFORMER 380/575-230V	EA	115.00
R02.18.030.00	KIT, HSJO CORD W/HDW	EA	25.00
R02.18.039.00	KIT,CORD 30A 125V HSJO 12/3	EA	71.00
R02.18.133.049	KIT,8 WIRE CABLE W/MALE PLUG	EA	37.00
R02.18.133.165	KIT,8 WIRE CABLE W/MALE PLUG	EA	37.00
R02.18.154.00	KIT,CORD & PLUG 15A 125V 14/3	EA	25.00
R02.18.286.00	KIT,HIGH LIMIT SENSOR&HARNESS	EA	86.00
R02.19.004.00	KIT,20A 125/250V,DOOR SW.SPDT	EA	26.00
R02.19.006.00	KIT,TOG SWITCH,20A, 2P-2POLE	EA	49.00
R02.19.008A.00	KIT,15A, DPST TOG SW.125/250V	EA	26.00
R02.19.016.00	KIT,TOGGLE SW.15AMP-SPST-125V	EA	26.00
R02.19.017.00	KIT,208V INFINITE SWITCH	EA	48.00
R02.19.018.00	KIT,120V INFINITE SWITCH	EA	48.00
R02.19.019.00	KIT,240V INFINITE SWITCH	EA	48.00
R02.19.028.00	KIT,TOASTER FUSE HOLDER & FUSE	EA	32.00
R02.19.082.00	KIT,SELECTOR SWITCH-TRH-TK	EA	53.00
R02.19.083.00	KIT,SELECTOR SWITCH-TQ-300	EA	53.00
R02.19.160.00	KIT,100V INFINITE SWITCH&LEADS	EA	48.00
R02.19.162.00	KIT,DRAIN SWITCH-FR2 & 3CS2	EA	22.00
R02.20.061.00	KIT, 60 MINUTE MANUAL TIMER	EA	59.00
R02.20.259.00	KIT,CORD GRIP LIQ TITE W/NUT	EA	5.00
R02.21.022.00	KIT,PMG IGNITION MODULE	EA	198.00
R02.21.039.00	KIT,SPARK CABLE CONV-100/200	EA	72.00
R02.21.040.00	KIT,SPARK CABLE CONV-PMG-60	EA	48.00
R02.22.001.00	KIT,HALIENT-ELE.2500W 240V 9"	EA	123.00
R02.22.002.00	KIT,HALIENT-ELE. 2400W 208V 9"	EA	123.00
R02.22.003.00	KIT,HALIENT-ELE.1200W 240V 6"	EA	113.00
R02.22.004.00	KIT,HALIENT-ELE. 1200W 208V 6"	EA	113.00
R02.22.007.00	KIT,HALIENT-ELE. 2500W 400V 9"	EA	123.00
R02.22.008.00	KIT,HALIENT-ELE. 1200W 400V 6"	EA	113.00
R02.22.009.00	KIT,HALIENT-ELE. 2400W 208V 9"	EA	123.00
R02.30.117.00	KIT,LAMP-300W,130V,HALOGEN	EA	17.00
R02.30.132.00	KIT,BALLAST,120-277V,50/60HZ	EA	49.00
R02.30.168.00	KIT,LAMP,50W,120V,XENON	EA	19.00
R02.40.047.00	KIT,DIODE ASSEMBLY	EA	17.00
R03.02.040.00	KIT,SOLENOID VALVE,24V,AWD	EA	137.00



Replacement Parts Price List in US Dollars

January 1, 2012

Item	Description	Unit of Measure	List Price
R03.04.004.00	KIT,3/4"MANIFOLD ASSY.PMG-60	EA	63.00
R03.05.027.00	KIT,PUMP W/GASKETS-PMG-60	EA	559.00
R03.05.049.00	KIT,FLEX WATER LINE & GASKET	EA	34.00
R03.05.052.00	KIT,PUMP W/GASKETS-PMG-100&200	EA	559.00
R03.05.106.00	KIT,SEALS FOR PMG PUMP ASSY	EA	192.00
R03.12.007.00	KIT,PMG-60 BURNER BLADES	EA	87.00
R03.12.008.00	KIT,HEAT EXCHANGER-PMG-60	EA	1,675.00
R03.12.010.00	KIT,GAS PILOT ASSY-NAT & LP	EA	48.00
R03.12.013B.00	KIT,HEAT EXCHANGER-PMG-100	EA	1,695.00
R03.12.017B.00	KIT-HEAT EXCHANGER-PMG-200	EA	2,025.00
R03.12.022.00	KIT,PMG60 ALTITUDE BLK ORIFICE	EA	20.00
R03.12.023.00	KIT,PMG100/200 ALTITUDE ORIFIC	EA	37.00
R03.17.001.01	KIT,FRONT SS HEAD & GASKET-1EL	EA	162.00
R03.17.002.01	KIT,REAR SS HEAD & GASKET 1 EL	EA	162.00
R03.17.003.01	KIT,FRONT SS HEAD & GASKET-2/3	EA	162.00
R03.17.004.01	KIT,REAR SS HEAD & GASKET-2/3	EA	162.00
R03.40.014.00	KIT,3/8 GALV SEAMLESS PIPE CAP	EA	3.00
R03.40.035.00	KIT,VALVE,SOL.2-WAY,1/8NPT 120	EA	161.00
R03.40.052.00	KIT,PLUMBING 90 DEGREE-FSD	EA	32.00
R03.40.054.00	KIT,PLASTIC DRAIN TUBE FS/FDW	EA	30.00
R03.40.055.00	KIT,CEILING DRAIN FS/FDW	EA	49.00
R03.40.058.00	KIT,PLUMBING,STRAIGHT-FSD	EA	34.00
R03.40.063.00	KIT, DRAIN CAP & GASKET	EA	7.00
R04.01.020P.00	KIT, PAINT SM CM BASE ASSEMBLY	EA	191.00
R04.01.022.00	KIT, SM CM S.S. BASE ASSEMBLY	EA	262.00
R04.01.032.00	KIT,SM.COMPACT PAINTED JACKET	EA	145.00
R04.01.033.00	KIT,PAINTED SM CM BASE FRONT	EA	37.00
R04.01.034.00	KIT,SM.COMPACT S.S. JACKET	EA	225.00
R04.01.035.00	KIT,S.S. SM CM BASE FRONT	EA	41.00
R04.01.036.00	KIT,SM.COMPACT FRONT COVER	EA	52.00
R04.01.100P.00	KIT,MCH BOOSTER JACKET-PAINTED	EA	87.00
R04.01.105.00	KIT, MC BOOSTER FRONT	EA	44.00
R04.01.110P.00	KIT, MC BOOSTER BASE-PAINTED	EA	90.00
R04.01.201P.00	KIT, PAINT LG CM BASE ASSEMBLY	EA	147.00
R04.01.220.00	KIT, LG.COMPACT PTD JACKET	EA	179.00
R04.01.221.00	KIT,LG.COMPACT S.S.FRONT COVER	EA	57.00
R04.01.223.00	KIT,PAINTED LG.CM BASE FRONT	EA	31.00
R04.01.251.00	KIT, LG.CM S.S.BASE ASSEMBLY	EA	329.00
R04.01.254.00	KIT,LG.COMPACT S.S. JACKET	EA	347.00
R04.01.255.00	KIT,S.S. LG.CM BASE FRONT	EA	46.00
R04.01.286.00	KIT,PAINTED SM C BASE FRONT-EZ	EA	37.00
R04.01.287.00	KIT,S.S.LC BASE FRONT-EZ	EA	46.00
R04.01.288.00	KIT,PAINTED LC BASE FRONT-EZ	EA	31.00
R04.01.292.00	KIT,BASE ASSY.S.S.LC EZ.	EA	329.00
R04.01.293.00	KIT,PAINT,LG CM BASE ASSY-EZ	EA	147.00
R04.03.002P.00	KIT, PAINT IMP BASE	EA	133.00
R04.03.004.00	KIT, IMP S.S.BASE	EA	252.00
R04.03.024.00	KIT,PAINTED IMP "S" JACKET	EA	296.00
R04.03.025.00	KIT,IMPERIAL "S" FRONT COVER	EA	113.00
R04.03.027.00	KIT,IMP INNER PANEL W/COVER	EA	37.00



Replacement Parts Price List in US Dollars

January 1, 2012

Item	Description	Unit of Measure	List Price
R04.03.030.00	KIT,PAINTED IMP"S"BASE FRONT	EA	46.00
R04.03.031.00	KIT,S.S. IMP "S" JACKET	EA	439.00
R04.03.032.00	KIT,S.S. IMP"S" BASE FRONT	EA	50.00
R04.05.002.00	KIT,RH SIDE PANEL VERT TOASTER	EA	152.00
R04.05.003.00	KIT,LH SIDE PANEL VERT TOASTER	EA	152.00
R04.05.004.00	KIT,TK 2/S TOASTER FRAME TOP	EA	118.00
R04.05.005.00	KIT,TK 3/S TOASTER FRAME TOP	EA	147.00
R04.05.008.00	KIT,LG 3/S TK FRAME BACK PANEL	EA	86.00
R04.05.252.00	SERVQ TQ-700H WIRE FEEDER RAMP	EA	62.00
R04.05.356.00	KIT,CRUMB TRAY-LONG	EA	35.00
R04.05.361.00	KIT,CRUMB TRAY-SHORT	EA	29.00
R04.05.388.00	KIT,TQ2-SECURITY	EA	84.00
R04.05.458.00	KIT,TOP COVER,,BLACK,TQ-20BA	EA	72.00
R04.05.461.00	KIT,SIDE PANEL,RIGHT,TQ-20BA	EA	49.00
R04.05.462.00	KIT,SIDE PANEL,LEFT,TQ-20BA	EA	49.00
R04.05.481.00	KIT,CRUMB TRAY, TQ-1800 SERIES	EA	52.00
R04.05.501.00	KIT,RH SIDE PANEL TRH TOASTER	EA	101.00
R04.05.502.00	KIT,LH SIDE PANEL TRH TOASTER	EA	101.00
R04.05.503.00	KIT,TRH TOASTER FRAME TOP	EA	118.00
R04.05.540.01	KIT,TQ2-SECURITY W/HOLES-BLACK	EA	87.00
R04.05.562.00	KIT,TOP COVER ASSEMBLY, TM-5H	EA	69.00
R04.05.580.00	KIT,CRUMB TRAY ASSY, TM-5H	EA	27.00
R04.05.619.00	KIT,TOP COVER ASSEMBLY, TM-10H	EA	79.00
R04.05.625.00	KIT,CRUMB TRAY ASSY, TM-10H	EA	32.00
R04.08.043.00	KIT, GR C-LEG STAND 10"	EA	46.00
R04.08.071.00	KIT, GR C-LEG STND 13 1/2"	EA	51.50
R04.08.073.00	KIT, GR 18" T-LEG	EA	110.50
R04.08.074.00	KIT,GR,16"T-LEG	EA	105.50
R04.08.075.00	KIT,GR,13 1/2"T-LEG	EA	99.00
R04.08.076.00	KIT,GR,10" T-LEG	EA	92.50
R04.09.056.00	KIT,BACK-UP & ELE SUPPORT PLTE	EA	11.00
R04.09.400.00	KIT,120V MOLDED,HTD BASE GRFFB	EA	374.00
R04.09.401.00	KIT,230V MOLDED,HTD BASE GRFFB	EA	374.00
R04.12.040.00	KIT,BREATH PROTECTOR GR-24	EA	90.00
R04.12.041.00	KIT,BREATH PROTECTOR GR-30	EA	104.00
R04.12.042.00	KIT,BREATH PROTECTOR GR-36	EA	135.00
R04.12.043.00	KIT,BREATH PROTECTOR GR-42	EA	152.00
R04.12.044.00	KIT,BREATH PROTECTOR GR-48	EA	164.00
R04.12.045.00	KIT,BREATH PROTECTOR GR 54	EA	176.00
R04.12.046.00	KIT,BREATH PROTECTOR GR-60	EA	192.00
R04.12.047.00	KIT,BREATH PROTECTOR GR-66	EA	210.00
R04.12.048.00	KIT,BREATH PROTECTOR GR-72	EA	225.00
R04.12.050.00	KIT,BREATH PROTECTOR GRBW-24	EA	90.00
R04.12.051.00	KIT,BREATH PROTECTOR GRBW-30	EA	104.00
R04.12.052.00	KIT,BREATH PROTECTOR GRBW-36	EA	135.00
R04.12.053.00	KIT,BREATH PROTECTOR GRBW-42	EA	152.00
R04.12.054.00	KIT,BREATH PROTECTOR GRBW-48	EA	164.00
R04.12.055.00	KIT,BREATH PROTECTOR GRBW-54	EA	176.00
R04.12.056.00	KIT,BREATH PROTECTOR GRBW-60	EA	192.00
R04.12.057.00	KIT,BREATH PROTECTOR GRBW-66	EA	210.00



Replacement Parts Price List in US Dollars

January 1, 2012

Item	Description	Unit of Measure	List Price
R04.12.058.00	KIT,BREATH PROTECTOR GRBW-72	EA	225.00
R04.12.059.00	KIT,BREATH PROTECTOR GRHW-1P	EA	87.00
R04.12.060.00	KIT,BREATH PROTECTOR,GRHW-2P	EA	147.00
R04.12.061.00	KIT, BREATH PROTECTOR GR-84	EA	253.00
R04.12.062.00	KIT, BREATH PROTECTOR GR-96	EA	282.00
R04.12.064.00	KIT, BREATH PROTECTOR GR-18	EA	73.00
R04.12.092.00	KIT,SNEEZE GUARD,GRBW-30,14"	EA	154.00
R04.12.093.00	KIT,BREATH PROTECOTR GR2BW-24	EA	90.00
R04.12.094.00	KIT,BREATH PROTECTOR GR2BW-30	EA	104.00
R04.12.095.00	KIT,BREATH PROTECTOR GR2BW-36	EA	135.00
R04.12.096.00	KIT,BREATH PROTECTOR GR2BW-42	EA	152.00
R04.12.097.00	KIT,BREATH PROTECTOR GR2BW-48	EA	164.00
R04.12.098.00	KIT,BREATH PROTECTOR GR2BW-54	EA	176.00
R04.12.099.00	KIT,BREATH PROTECTOR GR2BW-60	EA	192.00
R04.12.100.00	KIT,BREATH PROTECTOR GR2BW-66	EA	210.00
R04.12.101.00	KIT, BREATH PROTECTOR GR2BW-72	EA	225.00
R04.12.156.00	KIT,BREATH PROTECTOR GRSDS-41	EA	196.00
R04.12.157.00	KIT,BREATH PROTECTOR,GRSDS-52	EA	220.00
R04.12.162.00	KIT,BREATH PROTECTOR GR2SD-24	EA	99.00
R04.12.163.00	KIT,BREATH PROTECTOR,GR2SD-30	EA	122.00
R04.12.164.00	KIT,BREATH PROTECTOR,GR2SD-36	EA	147.00
R04.12.165.00	KIT,BREATH PROTECTOR,GR2SD-42	EA	172.00
R04.12.166.00	KIT,BREATH PROTECTOR,GR2SD-48	EA	196.00
R04.12.167.00	KIT,BREATH PROTECTOR,GR2SD-54	EA	220.00
R04.12.168.00	KIT,BREATH PROTECTOR,GR2SD-60	EA	246.00
R04.12.169.00	KIT,DOOR W/HDW,NO-CONTROL SIDE	EA	118.00
R04.12.170.00	KIT,DOOR W/HDW-CONTROL SIDE	EA	118.00
R04.12.203.00	KIT,GRJW-3 DOOR ASSEMBLY	EA	206.00
R04.12.205.00	KIT,GRJW-4 DOOR ASSEMBLY	EA	219.00
R04.12.210.00	KIT,SNEEZE GUARD,GRBW-48, 14"	EA	226.00
R04.12.212.00	KIT,SNEEZE GUARD,GRBW-60,14"	EA	271.00
R04.12.222.00	KIT,GRJW-2 DOOR ASSY-PULLOUT	EA	162.00
R04.12.241.00	KIT,SNEEZE GUARD,GRBW-72,14"	EA	332.00
R04.12.256.01	KIT,SNEEZE GAURD,GR3-39,BLACK	EA	155.00
R04.12.258.01	KIT,SNEEZE GUARD,GR3-27,BLACK	EA	155.00
R04.12.303.17	KIT,GR3HWH-1PD DOOR ASSY-ORG	EA	101.00
R04.12.325.00	KIT,GRCMW-1 SNEEZE GUARD ASSY	EA	387.00
R04.12.326.00	KIT,BREATH PROTECTOR,GRCMW-1DH	EA	405.00
R04.12.327.00	KIT,DOOR & BP-UPPER-GRCMW	EA	428.00
R04.12.327.01	KIT,DOOR,UPPER-GRCMW SERIES	EA	141.00
R04.12.329.00	KIT,GRHW-1SGD FRONT PANEL ASSY	EA	223.00
R04.12.349.00	KIT,FS2HAC FLIP DOOR ASSY	EA	113.00
R04.12.384.LH	KIT,FLIP-UP DOOR-L.H.FS2HAC-66	EA	148.00
R04.12.384.RH	KIT,FLIP-UP DOOR-R.H.FS2HAC-66	EA	148.00
R04.15.345.00	KIT,GRCW STACKING BRACKET-2PCS	EA	26.00
R04.16.122.00	KIT,Z-BRACKET ASSEMBLY-GRSB	EA	5.00
R04.16.500.00	KIT,NYLON ROLLER,STATIONARY	EA	9.00
R04.16.515.00	KIT,HDW DRAWER FRONT ONLY	EA	177.00
R04.16.519.00	KIT,HDW HEAT BAFFLE	EA	27.00
R04.16.533.00	KIT, DRAWER HANDLE	EA	33.00



Replacement Parts Price List in US Dollars

January 1, 2012

Item	Description	Unit of Measure	List Price
R04.17.012.00	KIT,7 SHELF RACK,FS TALL	EA	328.00
R04.17.012.01	KIT,SPECIAL 5 SHELF RACK-FS	EA	279.00
R04.17.013.00	KIT,3 SHELF SANDWICH RACK,FST	EA	424.00
R04.17.016.00	KIT,4 SHELF HORIZONTAL RACK	EA	206.00
R04.17.018.00	KIT,4 SHELF SLANT RACK	EA	321.00
R04.17.019.00	KIT,SPCL 5 SHELF SLANT RACK	EA	424.00
R04.17.067.00	KIT,LEG BRACKET FS/FST/FSTMN	EA	4.50
R04.17.076.00	KIT, PRETZEL RACK COUPLING	EA	15.00
R04.17.078.00	KIT, SS RACK COUPLING	EA	15.00
R04.17.1162.00	KIT, LFST RACK ASSEMBLY	EA	935.00
R04.17.143.00	KIT, 6 SHELF WIRE RACK F/FSHC	EA	523.00
R04.17.180.00	KIT, 2" DIAMETER CASTER	EA	17.00
R04.17.181.00	KIT, MTG BRKTS FOR 2" CASTERS	EA	33.00
R04.17.217.00	KIT,FSHC 5" CASTER BASE	EA	499.00
R04.17.221.00	KIT,FSHC CORNER BRACKET	EA	28.00
R04.17.328.00	KIT,CHILIS S.S. UPPER DOOR	EA	121.00
R04.17.329.00	KIT,CHILIS S.S. LOWER DOOR	EA	121.00
R04.17.344.00	KIT,8 SHELF RACK-FST	EA	389.00
R04.17.376.00	KIT,FSHC STACKING HARDWARE	EA	74.00
R04.17.438.00	KIT,WFST PAINTED BLACK HOOD	EA	123.00
R04.17.440.00	KIT,4 SHELF RACK-WFST X	EA	523.00
R04.17.472.00	KIT,CABLE CONNECTOR ASSEMBLY	EA	35.00
R04.17.473.00	KIT,COUNTER BALANCE ASSEMBLY	EA	79.00
R04.17.615.00	KIT,FSD RACK COLLAR WITH PINS	EA	21.00
R04.17.667.00	KIT,RACK-8 SHELF-PFST SERIES	EA	362.00
R04.17.675.00	KIT,STRIKER PLATES W/HDW-FSD	EA	8.00
R04.17.864.06	KIT,FSHC-7/7 STACKING SLVR GRA	EA	94.00
R04.17.899.01	KIT,FSD BLACK PAINTED HOOD	EA	54.00
R04.17.986.00	KIT,BUMPER ASSY-FSHC-6/7	EA	57.00
R04.19.648.00	KIT,"Z" BRACKET ASSY-GRSBF	EA	8.00
R04.19.812.00	KIT,CONTROL COVER	EA	41.00
R04.20.030.00	KIT,SLIDE ANGLE BRACKET	EA	52.00
R04.22.406.00	KIT,2 PAN ENCLOSURE & DIVIDER	EA	194.00
R04.24.021.00	KIT,ONE FRENCH DOOR W/STRIKER	EA	118.00
R04.24.022.00	KIT, FDW DOOR ASSEMBLY	EA	118.00
R04.24.066.00	KIT,GLASS DOOR ASSEMBLY-FDW-MN	EA	167.00
R04.24.087.00	KIT,MOTORLESS RACK COUP & PIN	EA	33.00
R04.25.260.00	KIT,BREATH PRO.R.H. GRCSC-24	EA	200.00
R04.25.263.00	KIT,BREATH PRO.L.H. GRCSC-24	EA	200.00
R04.28.052.00	KIT,PMG-100,200 STRT4"DUCT ASY	EA	32.00
R04.28.053.00	KIT,PMG-100,200-90DEG 4" DUCT	EA	32.00
R04.28.077.00	KIT,EXHAUST OUTLET PMG 100&200	EA	32.00
R04.31.472.00	KIT,DESIGNER NON-ADJ LEG 10"	EA	167.00
R04.31.477.00	KIT,DESIGNER NON ADJ. LEG 14"	EA	167.00
R04.31.478.00	KIT,DESIGNER NON ADJ.LEG 16"	EA	167.00
R04.32.173.00	KIT,4" DESIGNER LEG	EA	19.25
R04.32.429.00	KIT,GR2SD-36 SIGN HOLDER ASSY	EA	201.00
R04.34.001.00	KIT,TF WIRE RACK W/PADDLE STOP	EA	52.00
R04.34.269.00	KIT,BROILIER PAN FOR TF SERIES	EA	67.00
R04.34.295.00	KIT,BROILER PAN,TF-2005, S.S.	EA	96.00



Replacement Parts Price List in US Dollars

January 1, 2012

Item	Description	Unit of Measure	List Price
R04.34.304.00	KIT,BROILER PAN,TF-2005,VER.#2	EA	76.00
R04.34.384.00	KIT,BROILER PAN,PERF,TF-1900	EA	88.00
R04.35.095.00	KIT,DRAWER ASSEMBLY,GRMW-.5	EA	332.00
R04.35.112.00	KIT,CONNECTING ROD,GRJW SERIES	EA	57.00
R04.36.005.00	KIT,TANK ASSY-AWD-12 SERIES	EA	333.00
R04.38.231.00	KIT,GR3-33 HEATED GLASS"SHELF"	EA	710.00
R04.38.232.00	KIT,GR3-39 HEATED GLASS"SHELF"	EA	753.00
R04.38.296.01	KIT,GR3-35 HEATED GLASS"SHELF"	EA	710.00
R04.38.297.01	KIT,GR3-41 HEATED GLASS"SHELF"	EA	753.00
R04.40.095.00	KIT,GRCD-2PD CURVE GLASS FRONT	EA	356.00
R04.40.096.00	KIT,GRCD-3PD CURVE GLASS FRONT	EA	410.00
R04.40.106.00	KIT,GRCD-2P CURVED GLASS FRONT	EA	356.00
R04.40.107.00	KIT,GRCD-3P CURVED GLASS FRONT	EA	410.00
R04.40.113.00	KIT,FSD GLASS DOOR ASSEMBLY	EA	199.00
R04.40.115.00	KIT,FSDT GLASS DOOR ASSEMBLY	EA	211.00
R04.40.115.01	KIT,FSDT GLASS DOOR ASSY-BLACK	EA	211.00
R04.40.115.03	KIT,FSDT GLASS DOOR ASSY-RED	EA	211.00
R04.40.115BZ.00	KIT,FSDT GLASS DOOR-BRONZE	EA	241.00
R04.40.127.00	KIT,GRCD-1P CURVED GLASS FRONT	EA	243.00
R04.40.128.00	KIT,GRCD-1PD CURVE GLASS FRONT	EA	243.00
R04.40.129.00	KIT,GRCD-1P DOOR ASSEMBLY	EA	161.00
R04.40.130.00	KIT,GRCD-1PD DOOR ASSEMBLY	EA	175.00
R04.40.138.00	KIT,GRCD-1P MIRROR DOOR ASSY	EA	201.00
R04.40.139.00	KIT,GRCD-1PD MIRROR DOOR ASSY	EA	215.00
R04.40.155.00	KIT,HEATED GLASS FOR GRHW-1SGD	EA	531.00
R04.40.163.00	KIT,CD-3P HEATED GLASS 120V	EA	676.00
R04.40.181MB.00	KIT,GR3-27D HEATED GLASS-MID	EA	550.00
R04.40.181TB.00	KIT,GR3-27 HEATED GLASS	EA	550.00
R04.40.182MB.00	KIT,GR3-33D HEATED GLASS-MID	EA	710.00
R04.40.182TB.00	KIT,GR3-33 HEATED GLASS	EA	710.00
R04.40.183MB.00	KIT,GR3-39D HEATED GLASS-MID	EA	869.00
R04.40.183TB.00	KIT,GR3-39 HEATED GLASS	EA	869.00
R04.40.194.00	KIT,GR3-27 NON-HEATED GLASS	EA	192.00
R04.40.195.00	KIT,GR3-33 NON-HEATED GLASS	EA	249.00
R04.40.196.00	KIT,GR3-39 NON-HEATED GLASS	EA	304.00
R04.40.263.00	KIT,HEATED GLASS-GRHW-1SGD	EA	372.00
R04.40.284.00	KIT,FDWD GLASS DOOR ASSEMBLY	EA	154.00
R04.40.284.01	KIT,FDWD GLASS DOOR,BLACK,ASSY	EA	164.00
R04.40.289.00	KIT,SIDE GLASS & BRKTS-GRCMW-1	EA	100.00
R04.40.323.00	KIT,FSCDH-2PD CURVE GLASS FRT	EA	356.00
R04.40.326.00	KIT,FDWD-12 GLASS DOOR ASSY.	EA	102.00
R04.40.341.00	KIT,GLASS DOOR ASSY-FDWD-MN	EA	109.00
R04.40.344.00	KIT,GLASS,DCSBXXX-3624	EA	102.00
R04.40.357.00	KIT,36"GR3 GLASS SHELF,120V-HW	EA	768.00
R04.40.358.00	KIT,GR3H-48 HEATED GLASS ASSY	EA	779.00
R04.40.371.00	KIT,FDWD MIRROR GLAS DOOR ASSY	EA	186.00
R04.42.194.00	KIT,PAN INSTALL BRACKET-HWB	EA	6.00
R04.42.334.04	KIT,MOUNTING BRACKETS-RHW-4PCS	EA	5.00
R04.42.347.00	KIT,FULL PAN W/ DRAIN	EA	328.00
R04.44.008.00	KIT,BRACKET ASSY FOR TIMER-HQT	EA	20.00



Replacement Parts Price List in US Dollars

January 1, 2012

Item	Description	Unit of Measure	List Price
R04.45.013.00	KIT,WIRE SHELF ASSEMBLY-MDW	EA	72.00
R04.48.024.00	KIT,BRACKET FOR TSTAT BULB-HC8	EA	6.00
R04.48.058.00	KIT,LFST DOOR TROLLEY ASSEM-LH	EA	69.00
R04.48.059.00	KIT,LFST DOOR TROLLEY ASSEM-RH	EA	69.00
R04.48.431.00	KIT,CRUMB TRAY & HDW-FS2HAC-66	EA	223.00
R04.48.466.00	KIT,FS2HAC-XPT PAN SUPPORT	EA	67.00
R05.01.024.00	KIT,CONVEYOR CHAIN LUBE	EA	30.00
R05.02.007.00	KIT, INNER RACE (TRH)	EA	51.00
R05.03.001.00	KIT, CONVEYOR CHAIN TRH	EA	60.00
R05.03.007A.00	KIT,99PITCH CHAIN W/SLIP PLATE	EA	71.00
R05.04.150.00	KIT, PAN STOP PIN	EA	3.00
R05.06.100.00	KIT,DOOR GASKET,FSHC-8-1	EA	66.00
R05.09.021.00	KIT,14 TOOTH SPROCKET W/CLUTCH	EA	72.00
R05.09.022.00	KIT,DRIVEN SPROCKET W/CLUTCH	EA	67.00
R05.30.009.00	KIT,STRAINER ASSY,3CS/FR	EA	47.00
R05.30.011.00	KIT, BLACK PLASTIC FEET	EA	2.00
R05.30.012.00	KIT, 8" HANDLE	EA	28.00
R05.30.029.00	KIT,RUBBER FOOT/BUMPER	EA	2.00
R05.30.050.00	KIT, FILL CUP ASSEMBLY	EA	21.00
R05.30.065.00	KIT,PLASTIC LEG WITH PAD-4"	EA	11.00
R05.30.068.00	KIT,RUBBER FOOT,MDW SERIES	EA	2.00
R05.30.076.00	KIT,DOOR MAGNETS WITH ADHESIVE	EA	40.00
R05.30.081.00	KIT,LEG 1"X1/4 + 3/8" CONVERT	EA	5.00
R05.30.083.00	KIT,2 1/2"(6cm) LEG WITH PAD	EA	12.00
R05.30.086.00	KIT,RUBBER FOOT WITH SCREW	EA	2.00
R05.30.124.00	KIT,LEG ASSY-SRBW SERIES	EA	2.00
R05.30.133.00	KIT,KNOB-CARRIAGE HANDLE ASSY	EA	5.00
R05.30.148.04	KIT,FOOT ASSEMBLIES-(4 PCS.)	EA	4.00
R05.30.156.00	KIT,STRIKER PLATE,FS2HAC-66	EA	5.00
X02.01.238.00	CTRL BD RHW-01,2 220V W/BEEP	EA	103.00
X02.01.241.00	TEMP SENSOR,P-EC-405-007-0	EA	26.00
X02.01.243.00	TEMP SENSOR,P-EC-405-005-0	EA	31.00
X02.01.245.00	WATER PROBE,P-EL-170-018-0	EA	24.00
X02.01.246.00	MAIN BD,FLOM-18,P-EC-400-W10-0	EA	183.00
X02.01.249.00	FLOAT SWITCH,P-EL-160-S02-0	EA	130.00
X02.01.250.00	CONTROL RELAY,P-EL-010-J16-0	EA	31.00
X02.01.255.00	CONTROL BOARD,QTS-1	EA	535.00
X02.01.256.00	BOARD,TRIAC,QTS-1	EA	593.00
X02.01.258.00	PCB ASSY,TPT-208	EA	17.00
X02.01.265.00	POWER CONTROL BOARD,STM-4G	EA	62.00
X02.01.276.00	CONTRL BOARD,P-EC-400-W15-0	EA	356.00
X02.01.279.00	DISPLAY BOARD,P-EC-400-F40-0	EA	64.00
X02.01.280.00	CORD GRIP,TPU	EA	1.00
X02.01.281.00	TIMER SWITCH,TPU	EA	31.00
X02.01.282.00	PCB ASSY,TPT-230-4	EA	21.00
X02.01.293.00	PCB,TPT-208 R	EA	17.00
X02.01.303.00	PCB,FM2SS,DISPLAY BOARD	EA	12.00
X02.01.304.00	PCB,FM2SS,POWER	EA	19.00
X02.01.305.00	PROBE,FM2SS,TEMP CONTROL	EA	2.00
X02.01.307.00	TOUCH PANEL,W/RIBBN,IRX-3000	EA	176.00



Replacement Parts Price List in US Dollars

January 1, 2012

Item	Description	Unit of Measure	List Price
X02.01.308.00	TOUCH PANEL,W/RIBBN,IR2-3000	EA	372.00
X02.01.309.00	TOUCH PANEL,W/RIBBN,IRG15-3000	EA	176.00
X02.01.310.00	GENERATOR BOARD,IR1-3000	EA	417.00
X02.01.312.00	GENERATOR BOARD,IRG15-3000	EA	417.00
X02.01.313.00	GENERATOR BOARD,IRBR2-6200	EA	471.00
X02.01.315.00	PCB ASSY,IRBR2-6200	EA	183.00
X02.01.329.00	PROBE,WATERLEVEL,FM2SS	EA	4.00
X02.01.330.00	PCB,FM2SS POWER	EA	20.00
X02.01.331.00	TOUCH PANEL,W/RIBBON,IRW1-3000	EA	176.00
X02.01.332.00	SECURITY BOARD,IRW1-3000	EA	161.00
X02.05.595.00	HEAT ELEMENT RHW-01,2 220V	EA	69.00
X02.05.608.00	2000W 240V BLKT,P-HA-CW2-200-0	EA	68.00
X02.05.619.00	350W 220V WATER,P-HW-035-220	EA	73.00
X02.05.620.00	1000W 220V AIR,P-HA-F02-100	EA	87.00
X02.05.629.00	110W 115V WATER ELE, FSHC-17W	EA	137.00
X02.05.653.00	HEATING ELEM,WALLS,STM-4G	EA	43.00
X02.05.671.00	110W 220V WATER ELE, FSHC-17W	EA	137.00
X02.06.503.00	HEAT ELEM,2.85K,P-HW-285-224-0	EA	127.00
X02.06.504.00	ELEM,1KW 220V,P-HW-100-220-0	EA	103.00
X02.06.505.00	ELEM,2000W,230V,FM2SS,RING	EA	6.00
X02.06.506.00	ELEM,600W,230V,FM2SS,CENTER	EA	11.00
X02.08.622.00	1500W 220V AIR EL FSHC-17W	EA	174.00
X02.08.628.00	500W,230V,ELEMENT,GMFFL	EA	33.00
X02.09.262.00	TOP HEATING ELEM TM-5H 120V	EA	71.00
X02.09.264.00	BOTTOM HEAT ELEM TM-5H 120V	EA	71.00
X02.09.273.00	HEAT ELEM,TPT-208,104V,337W	EA	12.00
X02.09.274.00	HEAT ELEM,TPT-240,120V,337W	EA	12.00
X02.09.275.00	HEATING ELEM ASSY,TPT-230-4	EA	12.00
X02.12.084.00	FAN,GUARD TM	EA	5.00
X02.12.085.00	FAN,CIRCULATING 120V TM	EA	66.00
X02.12.092.00	CIRC MOTOR,220V,P-BL-200-120-0	EA	66.00
X02.12.093.00	COOLING FAN	EA	95.00
X02.12.099.00	FAN BLADE,BLOW MTR,FSHC-12/17	EA	8.00
X02.12.103.00	FAN MOTOR,230V,STM-4G	EA	19.00
X02.12.104.00	FAN IMPELLER,STM-4G	EA	3.00
X02.12.115.00	EXHAUST FAN,IRX SERIES	EA	77.00
X02.12.116.00	INTAKE FAN,IRG15-3000	EA	67.00
X02.13.331.00	RHEOSTAT 80 OHM 120V TM-LEADS	EA	79.00
X02.13.332.00	INTERFERENCE FILTER,QTS-1	EA	15.00
X02.13.334.00	POTENTIOMETER,COLOR,TPT-120	EA	5.00
X02.13.335.00	POTENTIOMETER,COLOR,TPT-208	EA	5.00
X02.13.342.00	TPT-120 R,PCB,RH	EA	19.00
X02.13.343.00	TPT-120 R,PCB,LH	EA	19.00
X02.15.052.00	T-BLOCK 3P 15 AMP TM	EA	5.00
X02.15.053.00	T-BLOCK,3P,FSHC-12/17	EA	22.00
X02.15.054.00	T-BLOCK,QTS	EA	30.00
X02.16.129.00	HI LIMIT/SENSOR RHW-01,2 220V	EA	93.00
X02.16.132.00	HI LIMIT ASSY,RHW-01,2	EA	19.00
X02.16.133.00	HI LIM,RCTHW-1E,P-EC-405-012-0	EA	19.00
X02.16.134.00	HI LIM CONTROL,P-EL-060-140-0	EA	55.00



Replacement Parts Price List in US Dollars

January 1, 2012

Item	Description	Unit of Measure	List Price
X02.16.136.00	TSTAT AIR & HUM,P-EL-050-085-0	EA	41.00
X02.16.137.00	TEMP IND 220V,P-EL-100-001-0	EA	66.00
X02.16.138.00	HIGH LIMIT SAFETY	EA	15.00
X02.16.142.00	T-STAT W/BULB,90-190F,FSHC-17W	EA	113.00
X02.16.145.00	THERMOSTAT,HI-LIMIT,QTS-1	EA	119.00
X02.16.147.00	THERMAL DISC,150C,STM-4G	EA	4.00
X02.16.148.00	THERMAL FUSE,STM-4G	EA	4.00
X02.16.155.00	TSTAT,LIMIT,MECH SURF,135C,MAN	EA	3.00
X02.16.156.00	TSTAT,LIMIT,MECH SURF,192C	EA	4.00
X02.16.159.00	SENSOR,IRG15-3000	EA	81.00
X02.17.070.00	TRANS,220-9.5V,P-LT-330-W22-0	EA	52.00
X02.17.071.00	TRANSFORMER,QTS-1	EA	33.00
X02.18.156.00	CORD,CONTROL,RHW	EA	57.00
X02.18.170.00	CORD,CONTROL,RCTHW	EA	47.00
X02.18.187.00	CORD,UK-BS,POWER,RHW-01,2	EA	44.00
X02.18.188.00	SOCKET,UK-BS,POWER,RHW-01,2	EA	3.00
X02.18.208.00	SERVICE,POWER CORD,FMSS-7	EA	15.00
X02.18.217.00	CORD,RCTHW,P-EL-300-BS1-3	EA	45.00
X02.18.222.00	CORD,20A 125V,SJTOW,14/3,HC-17	EA	109.00
X02.18.226.00	CORD,DETACHABLE,SCHUKO,STM-4G	EA	8.00
X02.18.231.00	CORD,DETACHABLE,BS-1363,STM-4G	EA	10.00
X02.18.254.00	CORD,15A 125V,SJTOW,14/3,HC-17	EA	68.00
X02.18.256.00	CORD,15A 250V,SJTOW,14/3,HC-17	EA	68.00
X02.18.364.00	POWER CORD,IRX SERIES,BS1363	EA	95.00
X02.18.365.00	POWER CORD,IRBR2-6200,NO PLUG	EA	95.00
X02.18.395.00	POWER CORD,IRG15-3000,BS1363	EA	95.00
X02.19.175.00	INDICATOR LIGHT GREEN 220V TM	EA	12.00
X02.19.176.00	INDICATOR LIGHT RED 220V TM	EA	12.00
X02.19.179.00	ON/OFF SWITCH,P-EL-080-15A-3	EA	9.00
X02.19.180.00	ON/OFF SWITCH,P-EL-080-15A-1	EA	9.00
X02.19.181.00	IN LAMP 220 RED,P-LT-100-001-0	EA	12.00
X02.19.182.00	IN LAMP 220 GRN,P-LT-100-R00-0	EA	12.00
X02.19.184.00	IN LAMP 120 RED,P-	EA	12.00
X02.19.185.00	IN LAMP 120 GRN,P-	EA	12.00
X02.19.186.00	DOOR SWITCH,P-	EA	10.00
X02.19.187.00	SWITCH INF HUMID,120V,FSHC-17W	EA	56.00
X02.19.188.00	SWITCH ROC SPST 20A 125-277ILL	EA	59.00
X02.19.189.00	ENCODER SWITCH,TIME/TEMP,QTS1	EA	106.00
X02.19.190.00	SWITCH,ON/OFF,QTS-1	EA	60.00
X02.19.191.00	MICRO SWITCH,QTS-1	EA	25.00
X02.19.193.00	SWITCH,DPDT,MICRO	EA	22.00
X02.19.195.00	SWITCH,ROCKER,GMFFL	EA	10.00
X02.19.203.00	INDICATOR LAMP,TPU	EA	3.00
X02.19.204.00	SWITCH,TPU-230-4,2 POSITION	EA	5.00
X02.19.205.00	SWITCH,TPU-230-6,2 POSITION	EA	5.00
X02.19.207.00	SW,INF HUMID,220-240V,FSHC-17W	EA	56.00
X02.19.210.00	SWITCH,SELECTOR,TPT-R	EA	8.00
X02.19.217.00	ENCODER,IRBR-6200	EA	285.00
X02.20.338.00	CORD STRAIN RELIEF BUSHING,RHW	EA	1.00
X02.20.339.00	BUSHING DISP,P-PZ-001-001-0	EA	1.00



Replacement Parts Price List in US Dollars

January 1, 2012

Item	Description	Unit of Measure	List Price
X02.20.342.00	SOLENOID,120VAC,TPT	EA	31.00
X02.20.343.00	PLUNGER,SOLENOID,TPT-120	EA	4.00
X02.20.344.00	PLUNGER,SOLENOID,TPT-208/240	EA	4.00
X02.20.390.00	CORD GRIP,STRT.,309-.430,FM2SS	EA	1.00
X02.20.391.00	CONNECTOR CABLE,IRBR-6200 LONG	EA	103.00
X02.20.400.00	CONNECTOR CABL,IRBR-6200 SHORT	EA	70.00
X02.22.014.00	HEATING ELEM,1500W,230V,QTS-1	EA	241.00
X02.22.015.00	HEATING ELEM,1377W/1500w	EA	241.00
X02.22.016.00	COIL,IRW-3000	EA	398.00
X02.22.017.00	COIL,IR2-3000,FRONT	EA	259.00
X02.22.018.00	COIL,IR2-3000,REAR	EA	259.00
X02.22.019.00	COIL,IRG15-3000	EA	410.00
X02.22.020.00	COIL,IRBR2-6200	EA	740.00
X02.30.102.00	LIGHT SOCKET,P-LT-600-138-0	EA	8.00
X02.30.103.00	LIGHT BULB,220V,P-LT-220-060-2	EA	7.00
X02.30.114.00	BULB,60W,230V,GMFFL,SERVICE	EA	7.00
X02.40.046.00	DIODE,TM	EA	3.00
X03.02.043.00	VALVE,DRN,RCTHW,P-PL-E12-090-0	EA	52.00
X03.02.044.00	ELB,DRAIN,RCTHW,P-PU-025-019-0	EA	23.00
X03.02.045.00	DELIME FILL CAP,P-PZ-016-010-0	EA	28.00
X03.02.046.00	SOLENOID VALVE,P-EL-200-C34-0	EA	86.00
X03.02.047.00	DISPENSE VALVE,P-EL-210-C34-0	EA	70.00
X03.02.050.00	WATER TANK OUT,H-HA-FLO-002-0	EA	16.00
X03.02.051.00	FILL SOLENOID,P-EL-210-C12-0	EA	86.00
X03.02.059.00	DISPENSE VALVE,HDCM05-01	EA	8.00
X03.02.061.00	DISPENSE VALVE,FLOM-18	EA	67.00
X03.02.062.00	DISPENSE VALVE,FLOM-40	EA	70.00
X03.02.066.00	DISPENSE VALVE,FLOM-18,40,80	EA	30.00
X03.02.079.00	FAUCET,FM2SS,DISPENSE	EA	35.00
X03.40.101.00	WATER REL FITNG,P-PZ-016-009-0	EA	7.00
X03.40.102.00	PIPE NIP,DISPEN,P-EL-390-001-0	EA	7.00
X04.05.434.00	TOP COVER W/INSUL TM-10H	EA	79.00
X04.05.435.00	TOP COVER W/INSUL TM-5H	EA	69.00
X04.05.436.00	SIDE PANEL,LH,TM	EA	51.00
X04.05.437.00	SIDE PANEL,RH,TM	EA	51.00
X04.05.438.00	REAR DISCHARGE TRAY TM-10H	EA	46.00
X04.05.439.00	REAR DISCHARGE TRAY TM-5H	EA	38.00
X04.05.440.00	DISCHARGE VANE TM-5H	EA	14.00
X04.05.441.00	DISCHARGE VANE TM-10H	EA	18.00
X04.05.446.00	COOLING FAN COVER TM-10H	EA	25.00
X04.05.449.00	BRACKET,HEATING ELEMENT,TM	EA	6.00
X04.05.526.00	LOW REFL,TM-5,H-TQ-010-031-1	EA	19.00
X04.05.528.00	LOW REFL,TM-10,H-TQ-010-031-0	EA	22.00
X04.05.546.00	CARRIAGE HANDLE ASSY,TPT-A	EA	19.00
X04.05.547.00	CRUMB TRAY ASSY,TPT-A	EA	7.00
X04.05.548.00	CARRIAGE HANDLE ASSY,TPT-208	EA	22.00
X04.05.549.00	CRUMB TRAY ASSY,TPT-208	EA	7.00
X04.05.550.00	DAMPER ASSY,TPT-208	EA	3.00
X04.05.554.00	PANEL,SIDE,TPU	EA	28.00
X04.05.556.00	COVER,BOTTOM,TPU-230-4	EA	6.00



Replacement Parts Price List in US Dollars

January 1, 2012

Item	Description	Unit of Measure	List Price
X04.05.557.00	CRUMB TRAY,TPU-230-4	EA	8.00
X04.05.558.00	JACKET,TPU-230-4	EA	47.00
X04.05.559.00	COVER,BOTTOM,TPU-230-6	EA	9.00
X04.05.560.00	CRUMB TRAY,TPU-230-6	EA	7.00
X04.05.684.00	CARRIAGE HANDLE ASSY,TPT-120 R	EA	8.00
X04.05.685.00	CARRIAGE HANDLE ASSY,TPT-208 R	EA	8.00
X04.09.733.00	GRILL PLATE,QTS-1	EA	49.00
X04.09.734.00	DRIP TRAY,QTS-1	EA	161.00
X04.17.1050.00	FRONT CTRL PNL,H-LE-010-005-0	EA	142.00
X04.17.1051.00	TOP COVER,H-LE-010-007-0	EA	69.00
X04.17.1052.00	DOOR HANDLE,P-MA-040-C09-0	EA	7.00
X04.17.1053.00	WATER TANK,H-LE-010-010-0	EA	92.00
X04.17.1054.00	4-TIER CICLE PAN RACK	EA	92.00
X04.17.1055.00	RACK COUPLING	EA	22.00
X04.17.1056.00	4-SHELF MULTI PURPOSE RACK	EA	177.00
X04.17.1057.00	CHAMBER COVER	EA	112.00
X04.17.1138.00	FLVM GLASS DOOR H-LE-010-011-0	EA	177.00
X04.17.1164.00	METAL TRIM CHANNEL,SIDE GLASS	EA	79.00
X04.17.1186.00	PAN SLIDE,FSHC-12/17	EA	48.00
X04.17.1277.00	HEAT TUNNEL COVER,FSHC-12/17	EA	206.00
X04.17.1382.00	CASTER,5" RIGID,FSHC-12,-17	EA	45.00
X04.17.1383.00	CASTER,5" SWIVEL,W/BRK,HC-12	EA	48.00
X04.19.1001.00	POT,11qt,RHW-01,2	EA	136.00
X04.19.1003.00	LID,11qt,RHW-01,2	EA	55.00
X04.19.1004.00	ENCLOSURE,RHW-01	EA	438.00
X04.19.1005.00	BOTTOM COVER,RHW-01	EA	14.00
X04.19.1006.00	ENCLOSURE,RHW-02	EA	620.00
X04.19.1007.00	BOTTOM COVER,RHW-02	EA	33.00
X04.19.1018.00	RHW BAMBOO STEAMER KIT	EA	44.00
X04.19.1037.00	RHW STEAMER PLATE	EA	81.00
X04.19.1064.00	BOX COVER,RHW-XB	EA	9.00
X04.19.1072.00	RCTHW SOUP KETTLE ACCY	EA	153.00
X04.19.1073.00	RCTHW SAUCE WARMER ACCY	EA	157.00
X04.19.1074.00	RCTHW STEAM PLATE ACCY	EA	127.00
X04.19.1075.00	RCTHW PASTA COOKER ACCY	EA	220.00
X04.19.1088.00	MOUNTING BRACKET,RHW-XB	EA	1.00
X04.19.1089.00	ENCLOSURE,RCTHW-1	EA	253.00
X04.19.1091.00	BOTTOM COVER,RCTHW-1	EA	41.00
X04.19.1092.00	BOTTOM COVER,RCTHW-1B	EA	41.00
X04.19.1094.00	RCTHW NOODLE LADLE,5" ACCY	EA	17.00
X04.19.1095.00	RCTHW 4QT SAUCE POT W/LID ACCY	EA	77.00
X04.19.1096.00	RCTHW 7QT SOUP POT W/LID ACCY	EA	108.00
X04.19.1098.00	POT,11QT W/HANDLES	EA	155.00
X04.19.1120.00	INSULATED PNL,METAL,RND,RHW	EA	9.00
X04.19.1121.00	WATER PAN,RCTHW,P-MA-380-001-0	EA	256.00
X04.19.1122.00	BRKT,SENSOR,RCT,H-BM-010-022-0	EA	11.00
X04.19.1123.00	PNL CVR,RCTHW,H-BM-010-023-0	EA	66.00
X04.19.1124.00	ENCLOSURE,RCTHW,H-BM-010-024-0	EA	239.00
X04.19.1125.00	BOTT CVR,RCTHW,H-BM-010-025-0	EA	43.00
X04.19.1152.00	LID W/ PLAST KNOB,11qt,RHW-01	EA	69.00



Replacement Parts Price List in US Dollars

January 1, 2012

Item	Description	Unit of Measure	List Price
X04.19.1195.00	RCTHW NOODLE LADLE,5" ACCY	EA	24.00
X04.19.1329.00	RCTHW 5 HOLE STEAMER PLATE ACC	EA	203.00
X04.20.085.00	PLATE DETECTION BAR,QTS-1	EA	48.00
X04.20.086.00	BRACKET,MOVING PANEL,QTS-1	EA	5.00
X04.26.390.00	HINGE EDGEMOUNT,FSHC-12/17	EA	67.00
X04.26.391.00	LATCH,MAGNETIC,FSHC-12/17	EA	151.00
X04.34.393.00	HOOD ASSY,QTS-1	EA	333.00
X04.34.423.00	Wall Mounting Bracket,QTS	EA	161.00
X04.34.455.00	FILTER,SS,IRX SERIES	EA	63.00
X04.34.456.00	SS FILTER AND SUPTS,IRG15-3000	EA	136.00
X04.34.457.00	FILTER SUPPORT,REAR,IRG15-3000	EA	63.00
X04.34.458.00	FILTER SUPPORT,IRBR2-6200	EA	63.00
X04.36.003.00	TOP COVER,H-IM-020-001-H	EA	139.00
X04.36.004.00	TANK COVER,H-IM-020-002-H	EA	92.00
X04.36.020.00	JACKET ASSY,H-IM-020-003-H	EA	290.00
X04.36.021.00	SOLENOID BRKT,H-IM-020-004-H	EA	15.00
X04.36.022.00	FRONT COVER,H-IM-020-005-H	EA	72.00
X04.36.023.00	SHELF,H-IM-020-006-H	EA	66.00
X04.36.024.00	FRONT CTRL PNL,H-IM-020-007-H	EA	97.00
X04.36.025.00	DRIP TRAY,H-IM-020-008-H	EA	74.00
X04.36.026.00	WATER TANK,H-IM-020-009-H	EA	434.00
X04.36.027.00	FRONT COVER,P-PZ-016-007-0	EA	49.00
X04.36.028.00	JACKET,SS,H-HA-FLO-001-0	EA	157.00
X04.36.029.00	BRKT,TANK,H-HA-FLO-003-0	EA	4.00
X04.36.030.00	WATER TANK,FRT,P-MA-860-R01-0	EA	218.00
X04.36.031.00	WATER TANK,REAR,P-MA-860-L01-0	EA	218.00
X04.36.032.00	BRKT,CONTROLS,H-HA-FLO-004-0	EA	4.00
X04.36.033.00	BACK PANEL,H-HA-FLO-005-0	EA	32.00
X04.36.034.00	MNT BRKT,H-HA-FLO-009-0	EA	4.00
X04.36.035.00	CTRL PNL BOTTOM,H-HA-FLO-008-0	EA	48.00
X04.36.036.00	DRIP TRAY ASSY,P-PZ-016-006-0	EA	46.00
X04.36.040.00	COVER ASSY,FM2SS	EA	30.00
X04.36.041.00	FILTER,BASKET,COVER,FM2SS	EA	28.00
X04.36.042.00	PUMP ASSY,FMSS,BREW RISER TUBE	EA	7.00
X04.36.043.00	SERVICE,BODY ASSY,FMSS-7	EA	176.00
X04.36.044.00	SERVICE,HANDLE ASSY,FMSS-7	EA	6.00
X04.36.045.00	SERVICE,DECO ASSY,FMSS-7	EA	6.00
X04.36.046.00	SERVICE,GLASS TUBE ASSY,FMSS-7	EA	6.00
X04.36.047.00	SERVICE,FAUCET ASSY,FMSS-7	EA	10.00
X04.36.048.00	SERVICE,HEATER ASSY,FMSS-7	EA	37.00
X04.36.049.00	SERVICE,BI-METAL ASSY,FMSS-7	EA	7.00
X04.36.050.00	SERVICE,BASE ASSY,FMSS-7	EA	15.00
X04.36.051.00	SERVICE,FOOT ASSY,FMSS-7	EA	1.00
X04.36.052.00	SERVICE,PCB ASSY,FMSS-7	EA	47.00
X04.36.053.00	SERVICE,CONTROL PNL,FMSS-7	EA	2.00
X04.36.054.00	SIGHT GLASS TUBE KIT,FM2SS	EA	2.00
X04.36.055.00	BASE,FM2SS	EA	8.00
X04.36.056.00	CONTROL PANEL,FM2SS	EA	4.00
X04.36.058.00	VENT CAP,SIGHT GLASS,FM2SS	EA	1.00
X04.36.059.00	PANEL,SIGHT GLASS DECO,FM2SS	EA	6.00



Replacement Parts Price List in US Dollars

January 1, 2012

Item	Description	Unit of Measure	List Price
X04.37.129.00	WIRE GUARD,GMFFL	EA	0.00
X04.40.255.00	GLASS SIDE PNL,P-GL-HC0-503-0	EA	52.00
X04.40.256.00	GLASS DOOR PNL,P-GL-HC0-515-0	EA	43.00
X04.40.288.00	TEMPERED GLASS,21.25x12,QTS-1	EA	179.00
X04.48.029.00	FSHC-12/17 WATER PAN,LONG	EA	112.00
X04.48.031.00	FSHC-12/17 DRAIN STOPPER	EA	22.00
X04.48.053.00	FSHC-12/17 WATER PAN,SHORT	EA	64.00
X05.02.024.00	BEARING ASSEMBLY TM	EA	15.00
X05.02.025.00	BUSHING,PLASTIC,COUNTRWT,QTS-1	EA	11.00
X05.02.026.00	BUSHING,PLASTIC,MOV PNL,QTS-1	EA	4.00
X05.02.027.00	RET RING,STEEL,GUIDE ROD,QTS-1	EA	3.00
X05.02.028.00	SHAFT BUSHING,TEFLON	EA	2.00
X05.03.040.00	DRIVE CHAIN,TM-5H	EA	20.00
X05.03.044.00	DRIVE CHAIN,TM-10H	EA	20.00
X05.03.049.00	DRIVE CHAIN,TM,14-16 TOOTH	EA	20.00
X05.03.052.00	COUNTER WEIGHT STRAP	EA	7.00
X05.04.488.00	THUMB SCREW,TM	EA	3.00
X05.04.493.00	LEG FASTENER,RHW-01,2	EA	2.00
X05.04.529.00	TANK STAND OFF,H-HA-FLO-006-0	EA	11.00
X05.04.530.00	TANK SUPPORT,H-HA-FLO-007-0	EA	15.00
X05.04.531.00	RACK CONNECTOR,P-MA-460-005-0	EA	8.00
X05.06.095.00	DOOR GASKET,FSHC-12,17	FT	2.50
X05.07.027.00	COUNTER WEIGHT SHAFT,QTS-1	EA	10.00
X05.07.028.00	COUNTER WEIGHT GUIDE ROD,QTS-1	EA	4.00
X05.07.029.00	MOVING PANEL GUIDE ROD,QTS-1	EA	68.00
X05.08.013.00	UPPER INSULATION SUPPORT,QTS-1	EA	5.00
X05.08.015.00	LATCH SPRING,TPT	EA	2.00
X05.08.016.00	CARRIAGE SPRING,0.7 X 9 X 36.5	EA	2.00
X05.08.017.00	DAMPING SPRING,0.6 X 8 X 18.5	EA	2.00
X05.09.052.00	SPROCKET,MOTOR,TM-5H-24 TOOTH	EA	15.00
X05.09.053.00	SPROCKET,MOTOR,TM-10H-24 TOOTH	EA	15.00
X05.09.054.00	SPROCKET,CONVEYOR,TM-5H	EA	17.00
X05.09.057.00	SPROCKET,MOTOR,TM,14 TOOTH	EA	15.00
X05.09.058.00	ALUMINUM PULLEY,QTS-1	EA	29.00
X05.30.094.00	LEGS,SUPPORT,RHW-01,2	EA	2.00
X05.30.097.00	LEG,1.25",P-MA-240-114-0	EA	5.00
X05.30.098.00	CONTROL KNOB,P-NA-401-065-0	EA	9.00
X05.30.099.00	DOOR MAGNET ASSEMBLY	EA	41.00
X05.30.100.00	DRAIN CAP	EA	22.00
X05.30.102.00	KNOB,TOP COVER,HDCM01-03	EA	3.00
X05.30.107.00	FOOT,FMSS-7,HDCM09-05	EA	5.00
X05.30.108.00	Oval HANDLE,QTS-1	EA	46.00
X05.30.109.00	KNOB,ON/OFF,QTS-1	EA	5.00
X05.30.114.00	RUBBER FOOT,TPT-A	EA	1.00
X05.30.116.00	FOOT ASSY,TPT-208	EA	2.00
X05.30.117.00	ADJUSTABLE UNIT FEET,STM-4G	EA	6.00
X05.30.120.00	FOOT,QTS-1	EA	5.00
X05.30.121.00	HANDLE,TPU BREAD LIFTER	EA	5.00
X05.30.122.00	LEG,TPU	EA	1.00
X05.30.123.00	KNOB,TPU,COLOR CONTROL	EA	5.00



Replacement Parts Price List in US Dollars

January 1, 2012

Item	Description	Unit of Measure	List Price
X05.30.125.00	TPT HANDLE	EA	5.00
X05.30.128.00	KNOB,TPU,SLOT SELECTOR	EA	5.00
X05.30.141.00	KNOB,TPT-R,COLOR CONTROL	EA	5.00
X05.30.159.00	FOOT,RUBBER,FM2SS,(4)	EA	1.00
X05.30.160.00	HANDLE W/COVER LATCH,FM2SS	EA	3.00
X05.30.161.00	FOOT,RUBBER,IR SERIES	EA	52.00
X05.30.162.00	FOOT,ADJUSTABLE,IRG15-3000	EA	52.00
X05.30.163.00	KNOB,CONTROL,IRBR2-6200	EA	45.00
X07.01.318.00	CONTROL DECAL,TPU-230-4	EA	5.00
X07.01.319.00	CONTROL DECAL,TPU-230-6	EA	6.00
X07.01.348.00	CONTROL OVERLAY,FM2SS	EA	4.00
X07.01.357.00	CONTROL PANEL,TPT-120R	EA	14.00
X07.01.358.00	CONTROL PANEL,TPT-208,-240	EA	15.00
X07.03.465.00	DECAL,CONTROL PLATE,TM-5H	EA	8.00
X07.03.466.00	DECAL,CONTROL PLATE,TM-10H	EA	11.00
X07.03.469.00	DECAL,RHW-01,2	EA	8.00
X07.03.512.00	DECAL,CTRL,RCTHW,P-NA-050-BM1	EA	25.00
X07.03.515.00	CONTROL DECAL,P-NA-121-040-H	EA	28.00
X07.03.516.00	CONTROL DECAL,P-NA-121-010-0	EA	12.00
X07.03.546.00	PANEL DECAL,QTS-1	EA	83.00
X07.03.566.00	SERVICE,OVERLAY,FMSS-7	EA	3.00
01.05.003.00	PMG-60 SS TANK ASSY	EA	719.00
01.05.005.00	PMG-100,200 SS TANK ASSY	EA	719.00
02.01.002.00	208/240V LWCO RELAY,SERVICE	EA	219.00
02.01.004.00	REL,CUBE,120AC,3PDT,10RES	EA	156.00
02.01.007.00	REL,OPEN,240AC,SPDT,30RES	EA	69.00
02.01.008.00	REL,OPEN,208/240AC,DPST,30RES	EA	61.00
02.01.010.00	REL,OPEN,120AC,2PST,30RES	EA	61.00
02.01.015.00	CON,STD,110/120AC,3P,50RES	EA	84.00
02.01.016.00	CON,STD,208/240AC,3P,50RES	EA	84.00
02.01.017.00	CON,STD,110/120AC,4P,50RES	EA	94.00
02.01.018.00	CON,STD,208/240AC,4P,50RES	EA	94.00
02.01.019.00	CON,AUXILARY INTERLOCK	EA	37.00
02.01.028.00	REL,CUBE,120AC,SPDTLATC,10RES	EA	61.00
02.01.031.00	REL,CUBE,120AC,3PDT,10RES	EA	82.00
02.01.039.00	REL,CUBE,24AC,DPDT,13RES	EA	46.00
02.01.040.00	CON,STD,110/120AC,2P,50RES	EA	78.00
02.01.043.00	REL,CUBE,240AC,SPDTPLATC,10RES	EA	128.00
02.01.049.00	T-STAT CONT SS 24VDC OUT FAR	EA	215.00
02.01.056.00	T-STAT PROBE 3-CON 36" FAR	EA	33.00
02.01.057.00	T-STAT PROBE 3-CON 48" FAR	EA	35.00
02.01.061.00	REL,MICRO,24DC,SPDT,10RES	EA	36.00
02.01.067.00	T-STAT PROBE 3-WIRE 77" FAR	EA	36.00
02.01.073.00	T-STAT CONT SS DUAL OUTPUT	EA	314.00
02.01.078.00	T-STAT PROBE RTD3 36" CEL	EA	33.00
02.01.079.00	T-STAT PROBE 3-CON 48" CEL	EA	35.00
02.01.080.00	T-STAT PROBE 3-CON 77" CEL	EA	37.00
02.01.083.00	LIQUID LEVEL CONTROL FR-LC	EA	202.00
02.01.085.00	T-STAT PROBE SS RTD2 100OHM@32	EA	76.00
02.01.086.00	T-STAT CONT SS DUAL IN/OUT FAR	EA	361.00



Replacement Parts Price List in US Dollars

January 1, 2012

Item	Description	Unit of Measure	List Price
02.01.087.00	T-STAT CONT SS DUAL IN/OUT C	EA	361.00
02.01.088.00	REL,MINI,120AC,SPDT,30RES	EA	23.00
02.01.097.00	REL,CUBE,120AC,DPDT,35RES	EA	75.00
02.01.098.00	REL,CUBE,208/240AC,DPDT,35RES	EA	75.00
02.01.104.00	REL,MINI,24DC,DPDT,30RES	EA	54.00
02.01.105.00	REL,MINI,240VAC,SPDT,30RES	EA	26.00
02.01.108.00	POTENTIOMETER W/7" LEADS	EA	31.00
02.01.113.00	POT W/7" LEADS METAL CASE	EA	37.00
02.01.116.00	REL,MINI,24VAC,DPDT,10RES	EA	35.00
02.01.117.00	POT W/36" LEADS METAL CASE	EA	44.00
02.01.121.00	LEVEL CONTROL 208/240V W/TD	EA	139.00
02.01.122.00	PROBE FOR LEVEL CONTROL	EA	50.00
02.01.144.00	T-STAT PROBE NiCAD 48" FAR	EA	41.00
02.01.145.00	T-STAT PROBE NiCAD 60"	EA	47.00
02.01.146.00	T-STAT PROBE NiCAD 77" FAHR	EA	47.00
02.01.149.00	REL,CUBE,240VAC,3PST,30RES	EA	87.00
02.01.167.00	CON,STD,24VAC,3P,50RES	EA	59.00
02.01.168.00	CON,STD,110/120AC,3P,50RES MC	EA	88.00
02.01.169.00	TF HORIZ DISPLAY BRD	EA	106.00
02.01.171.00	TF MAIN BOARD 3 TRIACS	EA	334.00
02.01.177.00	TIMER,VERTICAL BOARD LAYOUT	EA	121.00
02.01.180.00	REL,MINI,220VAC,SPDT,30RES	EA	49.00
02.01.187.00	REL,CUBE,100AC,SPDTLTC,10RES	EA	142.00
02.01.188.00	REL,MINI,208V,SPDT,30RES	EA	41.00
02.01.190.00	TF MAIN BOARD 2 TRIACS	EA	418.00
02.01.192.00	PROBE,100 OHM,RTD	EA	54.00
02.01.194.00	GFCI-7590E,120V,20A	EA	48.00
02.01.203.00	PROBE,TEMP,10K NTC THERMISTOR	EA	54.00
02.01.204.00	PROBE,TEMP/LVL,10K THERMISTER	EA	58.00
02.01.207.00	TF MAIN BOARD 1 UPPER,1 LOWER	EA	439.00
02.01.208.00	T-STAT,W/PORT,4 CHANNEL 24V	EA	424.00
02.01.216.00	TEMP/LVL 1K@25C PTC THER PROBE	EA	52.00
02.01.217.00	INTERLOCK SW,HARTLAND CONTACT	EA	37.00
02.01.218.00	CON,STD,120AC,3P,50RES	EA	88.00
02.01.221.00	GFCI-8895E,120V,80A	EA	101.00
02.01.222A.00	CONTROL,ELECTRONIC,120V IN	EA	136.00
02.01.224.00	REL,CUBE,120VAC,3PST,30RES	EA	63.00
02.01.226.00	TF CONTROL 10 PROG VERT BOARD	EA	224.00
02.01.236.00	REL,MINI,120AC,SPDT,15RES	EA	36.00
02.01.238.00	PCB,HEATER WELL CONTROL	EA	99.00
02.01.260.00	BEZEL FOR 02.01.259.00	EA	5.00
02.01.261.00	PROBE,48",FOR 02.01.259.00	EA	27.00
02.01.262.00	CON,STD,24VAC,4P,50RES	EA	68.00
02.01.273.00	T-STAT,W/PORT,DRY WMR 24V,195F	EA	265.00
02.01.286.00	PROBE,118",FOR 02.01.259.00	EA	87.00
02.01.288.00	ELECTRONIC CONTROL,REFRIG	EA	252.00
02.01.295.00	CONTROL,ELEC,THERM,240V,F	EA	130.00
02.01.296.00	PROBE,SS BUTTON	EA	89.00
02.01.298.00	CONTROL,ELEC,INF,230V,30A	EA	146.00
02.01.300.00	POT W/7" LEADS,CW INCREASING	EA	42.00



Replacement Parts Price List in US Dollars

January 1, 2012

Item	Description	Unit of Measure	List Price
02.01.326.00	POTENTIOMETER,2M OHM,7" LEADS	EA	31.00
02.01.340.00	CONTROL BRD ASSY,12V AC TIMER	EA	949.00
02.01.358.00	DIELECTRIC GREASE,.28 OZ PACKG	EA	9.00
02.03.004.00	FUSE HOLDER FOR AGC FUSE	EA	8.00
02.03.006.00	FUSE 1A 250V AC	EA	7.00
02.03.022.00	FUSE BLOCK 15A 480V 2P-G CLASS	EA	20.00
02.03.023.00	FUSE BLOCK 30A 600V 2P-T CLASS	EA	35.00
02.03.068.00	FUSE BLOCK 15A 480V 1P-G CLASS	EA	24.00
02.05.010A.00	225W 240V FLEX BLANKET ELEM	EA	99.00
02.05.050E.00	450W 240V HDW ELEMENT EXP	EA	60.00
02.05.051T.00	450W 208V HDW ELEMENT	EA	60.00
02.05.052T.00	450W 120V HDW ELEMENT	EA	60.00
02.05.053E.00	450W 220V HDW ELEMENT EXP	EA	60.00
02.05.053T.00	450W 220V HDW ELEMENT	EA	60.00
02.05.054T.00	450W 100V HDW ELEMENT	EA	60.00
02.05.055.00	450W 120V HDW-XN ELEMENT	EA	60.00
02.05.056.00	450W 208V HDW-XN ELEMENT	EA	60.00
02.05.057.00	450W 220V HDW-XN ELEMENT	EA	60.00
02.05.058.00	450W 240V HDW-XN ELEMENT	EA	60.00
02.05.058E.00	450W 240V HDW-XN ELEMENT EXP	EA	60.00
02.05.092.00	130W 240V FOIL ELEMENT-90"	EA	57.00
02.05.094.00	100W 240V FOIL ELEMENT-70"	EA	55.00
02.05.095.00	175W 240V FOIL ELEMENT-108"	EA	55.00
02.05.096.00	150W 240V FOIL ELEMENT-96"	EA	55.00
02.05.098.00	GRS/BW-12 50W 120V FOIL ELE	EA	27.00
02.05.099.00	GRS/BW-18 120W 120V 36 X 1 ELE	EA	34.00
02.05.100.00	GRS/BW-24 150W 120V 54"X1" ELE	EA	35.00
02.05.101.00	GRS/BW-30 185W 120V 66"X1" ELE	EA	41.00
02.05.102.00	GRS/BW-36 220W 120V 78"X1" ELE	EA	44.00
02.05.103.00	GRS/BW-42 250W 120V 90"X1" ELE	EA	47.00
02.05.105.00	GRS/BW-54 320W 120V 114"X1"ELE	EA	60.00
02.05.106.00	350W 120V 126" HEATING ELEM	EA	62.00
02.05.107.00	GRS/BW-66 385W 120V 138"X1"ELE	EA	73.00
02.05.108.00	GRS/BW-72 420W 120V 150"X1"ELE	EA	73.00
02.05.109.00	GRS/BW-24 150W 208V 54"X1" ELE	EA	35.00
02.05.111.00	GRS/BW-36 220W 208V 78"X1" ELE	EA	56.00
02.05.112.00	GRS/BW-42 250W 208V 90"X1" ELE	EA	57.00
02.05.113.00	GRS/BW-48 280W 208V 102"X1"ELE	EA	59.00
02.05.114.00	GRS/BW-54 320W 208V 114"X1"ELE	EA	60.00
02.05.115.00	GRS/BW-60 350W 208V 126"X1"ELE	EA	62.00
02.05.116.00	GRS/BW-66 385W 208V 138"X1"ELE	EA	72.00
02.05.122.00	110W 120V 70" X 1" FOIL ELEM	EA	61.00
02.05.126.00	150W 120V FOIL ELEMENT-108"	EA	57.00
02.05.127.00	50W 120V FOIL ELEMENT-36"	EA	35.00
02.05.129.00	GRS-48 280W 120V FOIL ELEMENT	EA	59.00
02.05.131.00	120W 220V FOIL ELEMENT	EA	54.00
02.05.132.00	185W 220V FOIL ELEMENT	EA	64.00
02.05.136.00	50W 220V 24"X1" ELEMENT	EA	50.00
02.05.137.00	150W 220V 54"X1" ELEMENT	EA	40.00
02.05.138.00	220W 220V 78"X1" ELEMENT	EA	57.00



Replacement Parts Price List in US Dollars

January 1, 2012

Item	Description	Unit of Measure	List Price
02.05.139.00	250W 220V 90"X1" ELEMENT	EA	75.00
02.05.141.00	280W 220V 102"X1" ELEMENT	EA	58.00
02.05.142.00	320W 220V 114"X1" ELEMENT	EA	63.00
02.05.143.00	350W 220V 126"X1" ELEMENT	EA	64.00
02.05.144.00	385W 220V 138"X1" ELEMENT	EA	73.00
02.05.145.00	420W 220V 150"X1" ELEMENT	EA	76.00
02.05.146.00	120W 240V 36"X1" ELEMENT	EA	56.00
02.05.147.00	150W 240V 54"X1" ELEMENT	EA	57.00
02.05.148.00	185W 240V 66"X1" ELEMENT	EA	58.00
02.05.149.00	220W 240V 78"X1" ELEMENT	EA	58.00
02.05.150.00	250W 240V 90"X1" ELEMENT	EA	58.00
02.05.151.00	250W 240V 102"X1" ELEMENT	EA	58.00
02.05.152.00	280W 240V 102"X1" ELEMENT	EA	58.00
02.05.155.00	385W 240V 138"X1" ELEMENT	EA	75.00
02.05.199.00	400W 240V BLANKET HEATER	EA	146.00
02.05.202.00	450W 120V BLK TYPE ROPE HEATR	EA	86.00
02.05.203.00	400W 120V BLK TYPE ROPE HEATR	EA	146.00
02.05.204.00	150W 120V BLK TYPE ROPE HEATR	EA	38.00
02.05.205.00	440W 120V BLK TYPE ROPE HEATR	EA	149.00
02.05.210.00	290W 120V BLK TYPE ROPE HEATR	EA	111.00
02.05.211.00	315W 120V BLK TYPE ROPE HEATR	EA	95.00
02.05.212.00	255W 120V BLK TYPE ROPE HEATR	EA	92.00
02.05.213.00	270W 120V BLK TYPE ROPE HEATR	EA	95.00
02.05.216.00	480W 240V BLK TYPE ROPE HEATR	EA	124.00
02.05.217.00	400W 240V BLK TYPE ROPE HEATR	EA	138.00
02.05.218.00	385W 240V BLK TYPE ROPE HEATR	EA	127.00
02.05.219.00	320W 240V BLK TYPE ROPE HEATR	EA	127.00
02.05.220.00	350W 240V BLK TYPE ROPE HEATR	EA	112.00
02.05.221.00	280W 240V BLK TYPE ROPE HEATR	EA	118.00
02.05.224.00	150W 220V BLK TYPE ROPE HEATR	EA	37.00
02.05.247.00	450W 120V BLANKET TYPE HEATER	EA	80.00
02.05.255.00	240W 120V BLANKET HEATER	EA	86.00
02.05.258.00	210W 120V BLANKET 35"x7" GRS	EA	55.00
02.05.259.00	210W 208V BLANKET 35"x7" GRS	EA	69.00
02.05.260.00	150W 120V BLANKET 7"x23" GRS	EA	50.00
02.05.264.00	150W 240V BLK TYPE ROPE HEATR	EA	46.00
02.05.267.00	120W 120V BLANKET 17"x7" GRS	EA	43.00
02.05.271.00	150W 100V BLK TYPE ROPE HEATR	EA	49.00
02.05.272.00	135W 120V BLK ROPE HTR GRKW-1	EA	60.00
02.05.274.00	390W 120V BLKT HTR GR SB 18x17	EA	84.00
02.05.275.00	610W 120V BLKT HTR GR SB 18x29	EA	111.00
02.05.276.00	720W 120V BLKT HTR GR SB 18x35	EA	137.00
02.05.277.00	275W 220V BLKT HTR GR SB 18x11	EA	74.00
02.05.278.00	390W 220V BLKT HTR GR SB 18x17	EA	84.00
02.05.279.00	610W 220V BLKT HTR GR SB 18x29	EA	111.00
02.05.280.00	720W 220V BLKT HTR GR SB 18x35	EA	137.00
02.05.281.00	275W 240V BLKT HTR GR SB 18x11	EA	71.00
02.05.282.00	390W 240V BLKT HTR GR SB 18x17	EA	84.00
02.05.283.00	610W 240V BLKT HTR GR SB 18x29	EA	111.00
02.05.284.00	720W 240V BLKT HTR GR SB 18x35	EA	137.00



Replacement Parts Price List in US Dollars

January 1, 2012

Item	Description	Unit of Measure	List Price
02.05.288.00	425W 120V BLK TYPE ROPE HEATR	EA	147.00
02.05.293.00	125W 120V GRHD BLANKET HEATER	EA	43.00
02.05.294.00	125W 240V GRHD BLANKET HEATER	EA	43.00
02.05.295.00	250W 120V GRHDH HUMIDITY BLNKT	EA	43.00
02.05.296.00	250W 230V GRHDH HUMIDITY BLNKT	EA	43.00
02.05.301.00	150W 230V CARVING STATION BLKT	EA	76.00
02.05.302.00	100W 120V 6&7.75 X 17 BLANKET	EA	29.00
02.05.303.00	125W 120V 6&7.75 X 23 BLANKET	EA	36.00
02.05.305.00	175W 120V 6&7.75 X 35 BLANKET	EA	44.00
02.05.306.00	125W 120V 9.75&12 X 17 BLANKET	EA	33.00
02.05.307.00	175W 120V 9.75&12 X 23 BLANKET	EA	41.00
02.05.308.00	225W 120V 9.75&12 X 29 BLANKET	EA	43.00
02.05.309.00	275W 120V 9.75&12 X 35 BLANKET	EA	46.00
02.05.310.00	100W 230V 6&7.75 X 17 BLANKET	EA	37.00
02.05.311.00	125W 230V 6&7.75 X 23 BLANKET	EA	84.00
02.05.314.00	125W 230V 9.75&12 X 17 BLANKET	EA	35.00
02.05.315.00	175W 230V 9.75&12 X 23 BLANKET	EA	41.00
02.05.316.00	225W 230V 9.75&12 X 29 BLANKET	EA	46.00
02.05.317.00	275W 230V 9.75&12 X 35 BLANKET	EA	50.00
02.05.333.00	1000W 120V BLK ROPEHTR 2BW-66	EA	149.00
02.05.337.00	400W 120V BLK HTR 41BK BASE	EA	137.00
02.05.343.00	325W 120V BLK TYPE ROPE HEATR	EA	150.00
02.05.344.00	250W 120V BLK TYPE ROPE HEATR	EA	139.00
02.05.347.00	400W 120V BLK TYPE ROPE HEATR	EA	147.00
02.05.391.00	325W 240V BLANKET HEATER	EA	174.00
02.05.392.00	250W 240V BLANKET HEATER	EA	172.00
02.05.405.00	325W 220V BLANKET HEATER	EA	174.00
02.05.406.00	250W 220V BLANKET HEATER	EA	172.00
02.05.415.00	1100W 120V HDW-MN ELEMENT	EA	76.00
02.05.442.00	475W 120V GRSB 24" WIDE BLKT	EA	107.00
02.05.443.00	750W 120V GRSB 24" WIDE BLKT	EA	140.00
02.05.456.00	875W 240V GRSB30x30 BLKT	EA	145.00
02.05.457.00	555W 220V GRSB18x30 BLKT	EA	98.00
02.05.458.00	875W 220V GRSB30x30 BLKT	EA	119.00
02.05.501.00	475W 120V BLKT HTR GRSB 14x29	EA	99.00
02.05.504.00	220W 120V GRFHS-16 BLANKET ELE	EA	86.00
02.05.505.00	225W 100V 9.75&12 X 29 BLANKET	EA	56.00
02.05.506.00	275W 100V 9.75&12 X 35 BLANKET	EA	50.00
02.05.507.00	125W 100V GRHD BLANKET HEATER	EA	62.00
02.05.508.00	250W 100V GRHDH HUMIDITY BLNKT	EA	62.00
02.05.509.00	450W 100V HDW-XN ELEMENT	EA	60.00
02.05.540.00	325W 120V FOIL ELEM,LH FRONT	EA	66.00
02.05.541.00	325W 120V FOIL ELEM,RH FRONT	EA	66.00
02.05.542.00	150W 120V FOIL ELEM,LH REAR	EA	66.00
02.05.543.00	150W 120V FOIL ELEM,RH REAR	EA	66.00
02.05.544.00	350W 120V GRSB 24" WIDE BLKT	EA	108.00
02.05.550.00	390W 100V BLKT HTR GRSB 18x17	EA	202.00
02.05.551.00	610W 100V BLKT HTR GRSB 18x29	EA	237.00
02.05.552.00	720W 100V BLKT HTR GRSB 18x35	EA	262.00
02.05.553.00	650W 120V BLANKET,RH	EA	75.00



Replacement Parts Price List in US Dollars

January 1, 2012

Item	Description	Unit of Measure	List Price
02.05.554.00	650W 120V BLANKET,LH	EA	75.00
02.05.555.00	135W 120V BLKT HTR HDW, TOP	EA	84.00
02.05.556.00	300W 120V BLKT HTR HDW, BOTTOM	EA	84.00
02.05.557.00	90W 120V BLKT HTR HDW, CENTER	EA	84.00
02.05.558.00	135W 220V BLKT HTR HDW, TOP	EA	84.00
02.05.559.00	300W 220V BLKT HTR HDW, BOTTOM	EA	84.00
02.05.560.00	90W 220V BLKT HTR HDW, CENTER	EA	84.00
02.05.561.00	135W 240V BLKT HTR HDW, TOP	EA	84.00
02.05.562.00	300W 240V BLKT HTR HDW, BOTTOM	EA	84.00
02.05.563.00	90W 240V BLKT HTR HDW, CENTER	EA	84.00
02.05.576.00	350W 230V GRSB 24" WIDE BLKT	EA	195.00
02.05.577.00	475W 230V GRSB 24" WIDE BLKT	EA	205.00
02.05.578.00	750W 230V GRSB 24" WIDE BLKT	EA	218.00
02.05.601.00	780W 120V BLKT HTR GRSS 18x30	EA	83.00
02.05.642.00	1000W 220V ELEM, TM-10	EA	76.00
02.05.643.00	350W 120V ELEM, 12.25 X 20	EA	57.00
02.05.655.00	425W 120V BLKT HTR 18 x 24	EA	97.00
02.05.657.00	630W 120V BLKT HTR 18 x 36	EA	76.00
02.05.658.00	500W 240V BLKT HTR 18 x 24	EA	100.00
02.05.659.00	625W 240V BLKT HTR 18 x 30	EA	77.00
02.05.660.00	750W 240V BLKT HTR 18 x 36	EA	67.00
02.05.661.00	110W 120V BLKT, QW-6, HIGH TEMP	EA	40.00
02.05.662.00	425W 120V BLKT HTR 18 x 24	EA	60.00
02.05.663.00	525W 120V BLKT HTR 18 x 30	EA	79.00
02.05.665.00	500W 240V BLKT HTR 18 x 24	EA	57.00
02.05.666.00	625W 240V BLKT HTR 18 x 30	EA	73.00
02.05.667.00	750W 240V BLKT HTR 18 x 36	EA	84.00
02.05.673.00	350W 230V ELEM, 12.25 X 20	EA	56.00
02.05.674.00	900W 220V ELEM, TM-10	EA	76.00
02.05.675.00	1000W 120V ELEM, TM-10	EA	76.00
02.05.676.00	750W 120V ELEM, TM-10	EA	76.00
02.05.677.00	700W 100V ELEM, TM-5	EA	71.00
02.05.678.00	700W 120V ELEM, TM-5	EA	71.00
02.05.679.00	700W 220V ELEM, TM-5	EA	71.00
02.05.680.00	600W 100V ELEM, TM-5	EA	71.00
02.05.681.00	600W 120V ELEM, TM-5	EA	71.00
02.05.682.00	600W 220V ELEM, TM-5	EA	71.00
02.05.711.00	800W 120V BLKT, DCSBXXX-3624	EA	92.00
02.05.714.00	350W 230V BLKT, DCSBXXX-R24	EA	87.00
02.05.715.00	500W 230V BLKT, DCSBXXX-2420	EA	100.00
02.05.716.00	800W 230V BLKT, DCSBXXX-3624	EA	118.00
02.07.001.00	750W 120V CERAMIC ELEMENT ONLY	EA	92.00
02.07.002.00	500W 120V CERAMIC ELEMENT ONLY	EA	92.00
02.07.003.00	750W 240V CERAMIC ELEMENT	EA	92.00
02.07.004.00	1000W 240V CERAMIC ELEMENT	EA	92.00
02.07.005.00	250W 120V 1/2 SIZE CERAMIC ELE	EA	82.00
02.07.006.00	375W 120V 1/2 SIZE CERAMIC ELE	EA	82.00
02.07.007.00	500W 120V 1/2 SIZE CERAMIC ELE	EA	82.00
02.07.008.00	650W 120V CERAMIC ELEMENT	EA	92.00
02.07.009.00	500W 240V CERAMIC ELEMENT	EA	92.00



Replacement Parts Price List in US Dollars

January 1, 2012

Item	Description	Unit of Measure	List Price
02.07.010.00	650W 240V CERAMIC ELEMENT	EA	92.00
02.07.011.00	500W 120V 2/3 SIZE CERAMIC ELE	EA	92.00
02.07.012.00	425W 120V 2/3 SIZE CERAMIC ELE	EA	92.00
02.07.013.00	375W 240V 1/2 SIZE CERAMIC ELE	EA	82.00
02.07.014.00	900W 120V CERAMIC ELEMENT	EA	92.00
02.07.015.00	900W 240V FULL CERAMIC ELE	EA	92.00
02.07.016.00	300W 240V 1/2 SIZE CERAMIC ELE	EA	82.00
02.07.017.00	500W 240V 1/2 SIZE CERAMIC ELE	EA	82.00
02.07.018.00	600W 240V 2/3 SIZE CERAMIC ELE	EA	92.00
02.07.020.00	500W 440V 2/3 SIZE CERAMIC ELE	EA	92.00
02.07.021.00	650W 440V CERAMIC ELEMENT	EA	92.00
02.08.581.01	HWB 750W 120V RECT ELEM	EA	54.00
02.08.581.03	HWB 1200W 208V RECT ELEM	EA	56.00
02.08.581.04	HWB 1200W 240V RECT ELEM	EA	56.00
02.08.581.05	HWB 1650W 120V RECT ELEM	EA	59.00
02.08.581.06	HWB 1650W 208V RECT ELEM	EA	59.00
02.08.581.07	HWB 1650W 240V RECT ELEM	EA	59.00
02.08.581.08	HWB 1200W 220V RECT ELEM	EA	56.00
02.08.581.09	HWB 1650W 220V RECT ELEM	EA	59.00
02.08.581.10	HWB 750W 208V RECT ELEM	EA	54.00
02.08.586.01	HWB 500W 120V ROUND ELEM	EA	51.00
02.08.586.02	HWB 800W 120V ROUND ELEM	EA	56.00
02.08.586.03	HWB 600W 220V RND ELEM 536@208	EA	51.00
02.08.586.04	HWB 600W 240V ROUND ELEM	EA	51.00
02.08.586.05	HWB 800W 220V RND ELEM 715@208	EA	56.00
02.08.586.06	HWB 800W 240V ROUND ELEM	EA	56.00
02.08.650.01	HWBI-S 750W 120V RECT ELEM	EA	54.00
02.08.650.02	HWBI-S 1200W 120V RECT ELEM	EA	56.00
02.08.650.03	HWBI-S 1200W 208V RECT ELEM	EA	56.00
02.08.650.04	HWBI-S 1200W 240V RECT ELEM	EA	56.00
02.08.650.05	HWBI-S 1200W 220V RECT ELEM	EA	56.00
02.09.241.00	900W 120V TQ ELEMENT	EA	38.00
02.09.242.00	1100W 120V TQ ELEMENT	EA	38.00
02.09.243.00	750W 208V TQ ELEMENT	EA	38.00
02.09.244.00	900W 208V TQ ELEMENT	EA	38.00
02.09.245.00	1100W 208V TQ ELEMENT	EA	38.00
02.09.246.00	750W 240V TQ ELEMENT	EA	38.00
02.09.247.00	900W 240V TQ ELEMENT	EA	38.00
02.09.248.00	1100W 240V TQ ELEMENT	EA	38.00
02.09.249.00	750W 230V TQ ELEMENT CE	EA	38.00
02.09.250.00	900W 230V TQ ELEMENT CE	EA	38.00
02.09.251.00	1000W 230V TQ ELEMENT CE	EA	38.00
02.09.252.00	1150W 230V TQ ELEMENT CE	EA	38.00
02.09.253.00	880W 120V TQ ELEMENT	EA	38.00
02.09.254.00	1250W 208V TQ ELEMENT	EA	38.00
02.09.255.00	650W 120V TQ ELEMENT	EA	38.00
02.09.256.00	1250W 240V TQ ELEMENT	EA	38.00
02.09.266E.00	1050W 208V TQ 3 SLICE ELEMENT	EA	61.00
02.09.267E.00	1260W 208V TQ 3 SLICE ELEMENT	EA	61.00
02.09.268E.00	1750W 208V TQ 3 SLICE ELEMENT	EA	61.00



Replacement Parts Price List in US Dollars

January 1, 2012

Item	Description	Unit of Measure	List Price
02.09.269E.00	1050W 240V TQ 3 SLICE ELEMENT	EA	61.00
02.09.270E.00	1260W 240V TQ 3 SLICE ELEMENT	EA	61.00
02.09.271E.00	1750W 240V TQ 3 SLICE ELEMENT	EA	61.00
02.11.001.00	GASKET FOR MC BOOSTER	EA	1.00
02.11.012.00	GASKET, ELEMENT (BOOSTER)	EA	1.00
02.12.001A.00	BLOWER MOTOR CONNECTOR	EA	12.00
02.12.003B.00	BASIC BLOWER MOTOR KIT 120VOLT	EA	258.00
02.12.004.00	MOTOR,RACK 120V 60Hz FDW 1 RPM	EA	115.00
02.12.005.00	MOTOR,RACK 120V 60Hz 2 RPM FS	EA	193.00
02.12.005R.00	FLAV-R-SAVOR RACK MOTOR KIT	EA	249.00
02.12.006.00	MOTOR,BLOWER 230V 50/60Hz FDW	EA	139.00
02.12.008A.00	FAN,COOLING 120V 60Hz TQ	EA	83.00
02.12.010.00	FAN,COOLING 230V 50/60Hz TQ	EA	83.00
02.12.011.00	FAN,GUARD CHROME WIRE	EA	11.00
02.12.026.00	MOTOR,RACK 240V 50Hz FDW	EA	142.00
02.12.030.00	FAN,CIRCULATION 115V 60Hz	EA	88.00
02.12.039.00	FAN,AXIAL 230V 50/60Hz	EA	88.00
02.12.047.00	MOTOR,RACK220/240 50/60Hz 2RPM	EA	235.00
02.12.049.00	MOTOR,GEAR 230V 50/60Hz WFST	EA	190.00
02.12.076.00	MOTOR,GEAR 208V 60Hz 11 RPM	EA	161.00
02.12.077.00	MOTOR,GEAR 240V 60Hz 11 RPM	EA	161.00
02.12.079.00	MOTOR,GEAR 230V 50Hz 11 RPM	EA	161.00
02.12.081.00	MOTOR,GEAR 120V 60Hz 9 RPM	EA	161.00
02.12.088.01	FAN BLADE,METAL,3",RH	EA	4.00
02.12.088.02	FAN BLADE,METAL,2.625",RH	EA	4.00
02.12.096.00	MOTOR,GEAR 230V 50Hz 11 RPMCCL	EA	161.00
02.12.101.00	MOTOR,GEAR 120V 60Hz 9 RPM	EA	161.00
02.12.102.00	MOTOR,GEAR 208-240V 60Hz 11RPM	EA	161.00
02.13.322.00	POTENTIOMETER HARNESS,TQ	EA	123.00
02.13.329.00	POTENTIOMETER,TQ,SPEED ONLY	EA	87.00
02.15.005.00	T-BLOCK 12P (N3CS-DC)	EA	23.00
02.15.008.00	T-BLOCK 3P HEAVY DUTY	EA	188.00
02.15.012.00	T-BLOCK 8P	EA	17.00
02.15.015.00	T-BLOCK 2P PORCELAIN	EA	8.00
02.15.021.00	T-BLOCK 3P #2/0 WIRE	EA	57.00
02.15.022.00	T-BLOCK SECT WAGO 2P GREEN	EA	8.00
02.15.027.00	T-BLOCK 30P PINCH SNAP MT 60	EA	64.00
02.15.029.00	T-BLOCK 3P 44AMP "CE"	EA	5.00
02.15.030.00	T-BLOCK 3P 26AMP "CE"	EA	7.00
02.15.037.00	T-BLOCK 3P 30AMP CERAMIC 500V	EA	17.00
02.16.001A.00	T-STAT CONT MECH WET 100-200	EA	132.00
02.16.002.00	T-STAT CONT MECH DRY 81-192	EA	82.00
02.16.003.00	T-STAT CONT MECH WET 112-192	EA	75.00
02.16.003A.00	T-STAT CONT MECH WET ROB SHAW	EA	109.00
02.16.003B.00	T-STAT CONT MECH WET 192F NI	EA	87.00
02.16.004.00	T-STAT LIMIT MECH WET 205	EA	109.00
02.16.004A.00	T-STAT CONT MECH WET 175 FIXED	EA	109.00
02.16.011.00	T-STAT CONT MECH DRY 600	EA	83.00
02.16.014.00	T-STAT LIMIT MECH SURFACE 190F	EA	86.00
02.16.016.00	T-STAT CONT MECH WET 200WO EXT	EA	86.00



Replacement Parts Price List in US Dollars

January 1, 2012

Item	Description	Unit of Measure	List Price
02.16.016A.00	T-STAT CONT MECH CORN COOK 160	EA	100.00
02.16.021.00	HUMIDITY CONTROL	EA	99.00
02.16.024.00	T-STAT CONT MECH WET 192	EA	66.00
02.16.025A.00	T-STAT LIMIT MECH WET 210F MAN	EA	71.00
02.16.028.00	T-STAT CONT MECH SURF FEN	EA	112.00
02.16.030.00	T-STAT CONT MECH DRY 215F	EA	87.00
02.16.035.00	T-STAT LIMIT MECH SURF 240F	EA	47.00
02.16.037.00	T-STAT CONT MECH DRY 192F	EA	77.00
02.16.043.00	T-STAT CONT DISP DRY 30-250	EA	62.00
02.16.044.00	T-STAT TID DRY CELCIUS VERT	EA	71.00
02.16.049.00	MECH DRUM THERMOMETER VERTICAL	EA	66.00
02.16.050.00	MECH DRUM THERMOMTR HORIZONTAL	EA	66.00
02.16.055.00	T-STAT CONT MECH DRY 285F	EA	84.00
02.16.060B.00	T-STAT CONT MECH DRY 285F MAX	EA	64.00
02.16.071.00	T-STAT LIMIT MECH BULB 220F	EA	78.00
02.16.072.00	T-STAT LIMIT MECH SURF 400F	EA	54.00
02.16.106.00	T-STAT LIMIT MECH SURF 320 MAN	EA	43.00
02.16.116.00	T-STAT LIMIT MECH WET 210F MAN	EA	72.00
02.16.120.00	T-STAT LIMIT MECH SURF 105F NO	EA	33.00
02.16.121.00	T-STAT LIMIT MECH SURF 204 MAN	EA	53.00
02.16.122.00	T-STAT LIMIT SURF 75C (167F)	EA	31.00
02.16.132.00	THERMOSTAT,HIGH LIMIT,240C	EA	19.00
02.16.146.00	T-STAT LIMIT MECH AIR 200F MAN	EA	22.00
02.16.152.00	T-STAT LIMIT MECH SURF 175F NO	EA	36.00
02.17.004.00	TRANS 120VSEC:208/240PRI 80VA	EA	75.00
02.17.005.00	TRANS 120VSEC:480PRI 80VA	EA	75.00
02.17.022.00	TRANS 24VSEC:120PRI 5VA	EA	33.00
02.17.023.00	TRANS 24VSEC:230PRI 10VA	EA	33.00
02.17.034.00	TRANS 24VSEC:120PRI 40VA	EA	26.00
02.17.035.00	TRANS 24VSEC:230PRI 25VA	EA	45.00
02.17.046.00	TRANS 24VSEC:208/240PRI 50VA	EA	55.00
02.17.048.00	TRANS 230VSEC:380PRI 50VA CE	EA	166.00
02.17.049.00	TRANS 120VSEC:208/240PRI 25VA	EA	45.00
02.17.050.00	TRANS 120VSEC:208/240PRI 50VA	EA	50.00
02.17.052.00	TRANS 120VSEC:480PRI 25VA	EA	45.00
02.17.053.00	TRANS 120VSEC:480PRI 50VA	EA	55.00
02.17.054.00	TRANS 120VSEC:208/240PRI 25VA	EA	45.00
02.17.055.00	TRANS 120VSEC:480PRI 25VA	EA	45.00
02.17.056.00	TRANS 120VSEC:600PRI 25VA	EA	45.00
02.17.058.00	TRANS 115VSEC:415/440VPRI 40VA	EA	45.00
02.17.060.00	TRANS 24VSEC:115-230PRI 20VA	EA	37.00
02.17.069.00	TRANS 120VSEC:230PRI 130VA	EA	116.00
02.18.001.00	WIRE 16GA YELLOW 200C	100 FT	75.00
02.18.002.00	WIRE 14GA BLACK 200C	100 FT	85.00
02.18.003.00	WIRE 14GA BLUE 200C	100 FT	85.00
02.18.004.00	WIRE 14GA RED 200C	100 FT	85.00
02.18.005.00	WIRE 12GA BLACK 200C	100 FT	100.00
02.18.006.00	WIRE 12GA BLUE 200C	100 FT	100.00
02.18.007.00	WIRE 12GA RED 200C	100 FT	100.00
02.18.008.00	WIRE 10GA BLACK 200C	100 FT	150.00



Replacement Parts Price List in US Dollars

January 1, 2012

Item	Description	Unit of Measure	List Price
02.18.009.00	WIRE 10GA BLUE 200C	100 FT	150.00
02.18.010.00	WIRE 10GA RED 200C	100 FT	150.00
02.18.012.00	WIRE 12GA WHITE 200C	100 FT	100.00
02.18.013.00	WIRE 12GA LT BROWN TGGT 250C	100 FT	310.00
02.18.016.00	CORD 6-20/RT 20A 90C 48"	EA	52.00
02.18.017.00	CORD 6-30/RT 25A 90C 52"	EA	99.00
02.18.031.00	WIRE 14GA WHITE 200C	100 FT	85.00
02.18.035.00	CORD 5-15/ST 15A 90C 132"	EA	26.00
02.18.036.00	CORD 6-15/ST 15A 105C 75"	EA	33.00
02.18.038.00	CORD CEE7/7/ST 16A 70C 78"	EA	30.00
02.18.039.00	CORD 5-30/RT 30A 90C 82"	EA	63.00
02.18.040.00	WIRE 16GA BLACK 200C	100 FT	75.00
02.18.041.00	WIRE 16GA RED 200C	100 FT	75.00
02.18.042.00	WIRE 16GA WHITE 200C	100 FT	75.00
02.18.044.00	WIRE 14GA GREEN TGGT 250C	100 FT	200.00
02.18.045.00	WIRE 14GA WHITE MGT450C	100 FT	330.00
02.18.060.00	WIRE 14GA GREEN 125C	100 FT	80.00
02.18.066.00	CORD BS1363/RT 6A 70C 77"	EA	35.00
02.18.068.00	CORD BS1363/RT 13A 70C 96"	EA	48.00
02.18.075.00	CORD 3G-1.5MM 16A 250V 60C 82"	EA	40.00
02.18.077.00	CORD CEE7/7/ST 10A 70C 74"	EA	40.00
02.18.082.00	CORD 5-20/ST 18A 105C 135"	EA	45.00
02.18.084.00	CORD 5-15/ST 13A 105C 138"	EA	31.00
02.18.085.00	CORD 20A 125/250V SJTO 14/4 78	EA	133.00
02.18.092.00	WIRE HIGH TEMP WITH RED TRACER	100 FT	200.00
02.18.093.00	WIRE 14GA TAN W/BLK MGT 450C	100 FT	300.00
02.18.097.00	WIRE 14GA TAN W/BLK TGGT 250C	100 FT	300.00
02.18.111.00	CORD 6-20/ST 20A 105C 82"	EA	58.00
02.18.128.00	CORD 20A L125/250V SJTO14/4 78	EA	87.00
02.18.129.00	CORD 5-15/RT 6A 105C 111" W/SW	EA	59.00
02.18.134.00	CORD CEE7/7/ST 6A 60C 74" W/SW	EA	59.00
02.18.141.00	CORD 30A 250V 12/4 78" LOCKING	EA	118.00
02.18.157.00	WIRE 16GA TAN MGT450C	100 FT	300.00
02.18.158.00	WIRE 16GA TAN W/BLK MGT 450C	100 FT	300.00
02.18.285.00	WIRE 10GA WHITE 200C	100 FT	150.00
02.19.015.00	SWITCH ROC DPST,125/250V,16AMP	EA	31.00
02.19.025.00	SWITCH TOG 3PST 25A 250V	EA	78.00
02.19.027.00	SWITCH ROC SPST 10A 125V ILLUM	EA	23.00
02.19.032.00	SWITCH ROC SPST 5A 250V ILLUM	EA	33.00
02.19.038.00	NEMA 5-30R 30A 125V SNGL RECEP	EA	67.00
02.19.062.00	NEMA 5-20R 20A 125V SIN RECEP	EA	18.00
02.19.070G.00	PILOT LT GREEN 120V .140 GRIP	EA	6.00
02.19.070R.00	PILOT LT RED 120V .140 GRIP	EA	6.00
02.19.071G.00	PILOT LT GREEN 250V .140 GRIP	EA	6.00
02.19.071R.00	PILOT LT RED 250V .140 GRIP	EA	6.00
02.19.075.00	SWITCH ROC DPST 22A 120V RED	EA	23.00
02.19.076.00	SWITCH ROC DPST 16A 250V GREEN	EA	23.00
02.19.080.00	SWITCH ROC DPST 16A 125V ILLUM	EA	23.00
02.19.081.00	SWITCH ROC DPST 16A 250V ILLUM	EA	33.00
02.19.150.00	PILOT LT GREEN 250V	EA	6.00



Replacement Parts Price List in US Dollars

January 1, 2012

Item	Description	Unit of Measure	List Price
02.19.151.00	PILOT LT RED 250V	EA	6.00
02.19.152.00	PILOT LT YELLOW 250V	EA	6.00
02.19.153.00	PILOT LT AMBER 125V	EA	6.00
02.19.154.00	PILOT LT RED 125V	EA	6.00
02.19.155.00	PILOT LT GREEN 125V	EA	6.00
02.19.161.00	SWITCH ROC DPST 16A 250V	EA	20.00
02.19.164.00	SWITCH,SPNO,LED,DRY CIRCUIT	EA	32.00
02.19.168.00	SWITCH TOG SPST 3A W/LEADS	EA	17.00
02.19.174.00	SWITCH,SELECTOR,4 POSITION,TM	EA	66.00
02.19.177.00	SW ROC SPST 22A 125V,16A 250V	EA	23.00
02.19.178.00	SWITCH ROC DPST 250V 10A GREEN	EA	20.00
02.20.011.00	3/4" CONDUIT LOCKNUT	EA	3.00
02.20.022.00	WIRE NUT PHENOLIC 150C	EA	0.50
02.20.026.00	1" DIA SCREENED PLUG	EA	3.00
02.20.027.00	CIRCUIT BREAKER BOOT N3CS	EA	159.00
02.20.030.00	7/8" SNAP PLUG BRT NI-PLT	EA	1.00
02.20.040.00	RUBBER BOOT FOR TOG SW	EA	7.00
02.20.043.00	1/2" SNAP PLUG CHROME PLTD	EA	1.00
02.20.047.00	WIRE NUT PHENOLIC 150C	EA	0.50
02.20.055.00	CAPLUG 1"SQ TUBING BLACK	EA	1.00
02.20.056.00	CAPLUG 1-1/2"SQ TUBING BLACK	EA	1.00
02.20.059.00	WEST BEND RECALL TIMER	EA	55.00
02.20.076.00	HEAT SHRINK TUBE,.205ID X 1"LG	EA	0.35
02.20.095.00	1" SNAP PLUG	EA	0.25
02.20.112.00	8 TERM MINI PLUG FEMALE	EA	23.00
02.20.202.00	3/8" SNAP BUSHING	EA	1.00
02.20.205.00	1/2" SNAP BUSHING	EA	0.25
02.20.206.00	CORD GRIP RT ANG 5/8" SR-11	EA	1.00
02.20.208.00	3/4" SNAP BUSHING BLACK	EA	0.25
02.20.209.00	CORD GRIP,STRT,.600-.690 MAX	EA	2.00
02.20.211.00	.730 X .560 ADAPTER 7/8" HOLE	EA	2.00
02.20.213.00	5/8" SNAP BUSHING	EA	0.25
02.20.216.00	5/16" SNAP PLUG	EA	0.25
02.20.217.00	3/8" SNAP PLUG BLACK	EA	0.25
02.20.218.00	1/4" SNAP PLUG BLACK	EA	0.50
02.20.220.00	3/16" SNAP PLUG	EA	0.50
02.20.221.00	WIRE NUT PORCELAIN 3-18 GA	EA	0.75
02.20.222.00	WIRE NUT,PORCELAIN 5-18 GAUGE	EA	1.00
02.20.224.00	CORD GRIP RT ANGLE(HPN)9/16"	EA	1.00
02.20.226.00	CORD GRIP STR THRU(ST)7/8"DIA	EA	1.00
02.20.230.00	9/16" SNAP BUSHING BLACK	EA	1.00
02.20.231.00	21/32" SNAP PLUG BLACK	EA	3.00
02.20.232.00	17/64" OPN/CLOSED BUSHING	EA	1.00
02.20.269.00	CORD GRIP 3/8" CONDUIT HUB	EA	20.00
02.20.270.00	CORD GRIP 3/8" CONDUIT LOCKNUT	EA	1.00
02.20.330.00	CORD GRIP,RT ANGLE,.770 X .875	EA	1.00
02.20.332.00	2 EAR CLAMP,9mm	EA	1.00
02.20.333.00	DIGITAL TIMER W/MEMORY	EA	46.00
02.20.334.00	EMT ANGLE COMP CONNECTOR,1/2"	EA	15.00
02.20.335.00	UF CABLE CONNECTOR,1/2"	EA	14.00



Replacement Parts Price List in US Dollars

January 1, 2012

Item	Description	Unit of Measure	List Price
02.20.356.00	CORD GRIP,STRT.,.770 X .875	EA	1.00
02.21.024.00	LP GAS VALVE CONVERSION KIT	EA	12.00
02.21.025.00	GAS VALVE NAT 3/4" W/LP KIT	EA	251.00
02.21.027.00	PMG-100 PRES SWITCH BLUE -.13	EA	37.00
02.21.028.00	PMG-200 PRESSWITCH WHITE -.28	EA	37.00
02.22.010.00	RECT RIBBON 3500W 240V 17x12	EA	219.00
02.30.039.00	LAMP SOCK,SINGLE,27" LEADS,FS	EA	23.00
02.30.040.00	LAMP SOCK,SINGLE,12" LEADS,FS	EA	19.00
02.30.041.00	LAMP HOLDER,END,30" 250C	EA	29.00
02.30.043.00	LAMP-60W,120V,INCANDESCENT,CTD	EA	6.00
02.30.044.00	LAMP SOCK,SINGLE,24" LEADS FW	EA	23.00
02.30.045.00	LAMP SOCK,TWIN,28" LEADS,FW	EA	43.00
02.30.047.00	LAMP SOCK,TWIN,28"HI TEMP LEAD	EA	49.00
02.30.049.00	LAMP-40W,130V,COATED	EA	8.00
02.30.051.00	LAMP SOCK,SINGLE,24"HI TEMP	EA	29.00
02.30.054.00	LAMP-21W,LIGHT BULB FLUORESCNT	EA	54.00
02.30.058.00	LAMP-60W,240V,CLEAR,TEFLON CTD	EA	7.00
02.30.060.00	LAMP SOCK,SINGLE,65" LEADS,HL	EA	23.00
02.30.061.00	LAMP SOCK,TWIN,65" LEADS,HL	EA	46.00
02.30.067.00	LAMP SOCK,LW	EA	8.00
02.30.068.00	LAMP-250W,120V,RED,INF,CTD	EA	32.00
02.30.069.00	LAMP-250W,120V,CLR,INF,CTD	EA	25.00
02.30.070.00	LAMP-250W,120V,RED,INF,UNCTD	EA	23.00
02.30.071.00	LAMP-250W,120V,CLR,INF,UNCTD	EA	15.00
02.30.073.00	LAMP SOCK,FSD	EA	6.00
02.30.074.00	LAMP-15W,120V,FSD	EA	28.00
02.30.076.00	FSD LIGHT COVER	EA	12.00
02.30.077.00	LAMP-21W,120V,30",FLUORESCENT	EA	36.00
02.30.081.00	LAMP-60W,120V,CTD,CLEAR HALGN	EA	19.00
02.30.082.00	LAMP-60W,240V,CTD,CLEAR,HALGN	EA	58.00
02.30.083.00	LAMP-250W,240V,CLR,INF,UNCTD	EA	45.00
02.30.087.00	LAMP SOCK,TWIN,30",450C LEADS	EA	48.00
02.30.089.00	LAMP-18W,120V,20",FLUORESCENT	EA	153.00
02.30.091.00	LAMP HOLDER,END,6" 200C LEADS	EA	17.00
02.30.092.00	18W 20" 120V FLUOR T4,WARM WHT	EA	39.00
02.30.093.00	LAMP-375W,120V,CLR,INF,UNCTD	EA	32.00
02.30.094.00	LAMP-375W,120V,RED,INF,UNCTD	EA	50.00
02.30.097.00	LAMP-375W,120V,CLR,INF,CTD	EA	41.00
02.30.098.00	LAMP-375W,120V,RED,INF,CTD	EA	59.00
02.30.100.00	LAMP-250W,240V,CLR,INF,CTD	EA	56.00
02.30.104.00	LAMP HOLDER,END,60" 200C LEADS	EA	23.00
02.30.116.00	LAMPHOLD,SINGLE,36" 450C LEADS	EA	47.00
02.30.126.00	LAMP-300W,240V,QUARTZ,SERVE RT	EA	41.00
02.30.128.00	LAMPHOLD,SINGLE,24" 200C LEADS	EA	33.00
02.30.135.00	BALLAST,120 TO 277V,50/60Hz	EA	71.00
02.30.145.00	LAMP HOLDER,END,41" 200C LEADS	EA	15.00
02.30.150.00	LAMP-150W,130V,QUARTZ	EA	9.00
02.30.151.00	LAMP-150W,240V,QUARTZ,SERVE RT	EA	26.00
02.40.001.00	LIQUID LEVEL SENSING PROBE BO	EA	43.00
02.40.002.00	DIODE-ALL TOASTERS	EA	3.00



Replacement Parts Price List in US Dollars

January 1, 2012

Item	Description	Unit of Measure	List Price
02.40.015.00	FHX LWCO PROBE SHORT	EA	37.00
02.40.045.00	LWCO PROBE W/90 DEG BEND	EA	48.00
02.41.001.00	FUSE BLOCK 60A 300V 2P 2/0 LUG	EA	38.00
02.41.005.00	FUSE BLOCK 60A 300V 2P 2/0DUAL	EA	80.00
02.41.010.00	FUSE BLOCK 60A 300V 3P 2/0 LUG	EA	60.00
02.41.015.00	FUSE BLOCK 60A 300V 4P 2/0 LUG	EA	66.00
02.41.020.00	FUSE BLOCK 60A 300V 4P	EA	101.00
02.41.021.00	FUSE BLOCK 60A 300V 4P	EA	101.00
02.41.022.00	FUSE BLOCK 60A 300V 4P	EA	101.00
02.41.030.00	FUSE BLOCK 60A 600V 3P	EA	55.00
03.01.003.00	T/P GAUGE	EA	72.00
03.01.005.00	DIAL IND THERM FAHR & CELSIUS	EA	88.00
03.01.010.00	GAUGE,1/4"NPT,REAR STEM	EA	71.00
03.02.001.00	3/4" BALL VALVE	EA	54.00
03.02.001A.00	1-1/4 EXTENSION STEM KIT	EA	19.00
03.02.001B.00	BALL VALUE HANDLE	EA	8.00
03.02.002.00	3/4" SWEAT BALL VALVE	EA	61.00
03.02.004.00	PRESSURE REDUCING VALVE-IRON	EA	60.00
03.02.015.00	BRASS REGULATING VALVE	EA	108.00
03.02.020.00	RELIEF VALVE,T/P 150 PSI 210F	EA	30.00
03.02.022.00	T/P RELIEF VALVE (40XL-Z2)	EA	83.00
03.02.025.00	MANUAL SHUT OFF VALVE, NO LOCK	EA	41.00
03.02.026.00	SOLENOID VALVE 240V. 50/60Hz	EA	159.00
03.02.027.00	PMG-100 3/4" GAS SHUTOFF VALVE	EA	43.00
03.02.032.00	VALVE,DELTROL FRONT BRKT,24VAC	EA	185.00
03.02.039.00	BACKPRES REL VLV 1/2NPT 125PSI	EA	45.00
03.02.048.00	SOLENOID VALVE 120V. 60Hz	EA	46.00
03.02.048A.00	SOLENOID VALVE 240V. 50/60Hz	EA	46.00
03.02.067.00	VALVE,BALL,1",THREADED	EA	53.00
03.04.001.00	COPPER MANIFOLD-PLATED,3CS	EA	15.00
03.05.026.00	(2) PUMP FLANGES W/BOLTS	EA	48.00
03.05.055.00	PMG-100 3/16 x 3/8 SILIC. TUBE	FT	6.00
03.05.061.00	WATERTREAT UNIT 9799110 W/CART	EA	585.00
03.05.061A.00	WATERTREAT CARTRIDGE EV979922	EA	324.00
03.05.061B.00	WATERTREAT REP O-RING SCALTROL	EA	5.00
03.12.011.00	LP GAS PILOT #10 ORIFICE	EA	6.00
03.12.012.00	PMG-100,200 40mm GAS BURNER	EA	113.00
03.12.014.00	PMG-100 1/2x12" HOSE W/FTG	EA	20.00
03.12.015.00	PMG-100 GAS MANIFOLD	EA	129.00
03.12.016.00	PMG-100 1/8" #34 NAT ORIFICE	EA	8.00
03.12.019.00	PMG-200 GAS MANIFOLD	EA	134.00
03.12.020.00	PMG-200 1/8" #35 NAT ORIFICE	EA	8.00
03.12.021.00	PMG-100/200 1/8" #50 LP ORIF	EA	8.00
03.30.009.00	3/4" COPPER OUTLET PIPE	EA	45.00
03.30.015.00	INLET TUBE,LG COMPACT,DIMPLED	EA	48.00
03.40.034.00	2 WAY SOLENOID VALVE 220V,240V	EA	106.00
03.40.042.00	1/4" NYLO-SEAL TUBING (NAT)	FT	1.00
03.40.043.00	MALE CONN 3/8"PIPE TO 1/4" TUBE	EA	19.00
03.40.044.00	WATER FILL CUP	EA	23.00
03.40.053.00	1/4" ID TUBING	FT	8.00



Replacement Parts Price List in US Dollars

January 1, 2012

Item	Description	Unit of Measure	List Price
03.40.057.00	SHOCK ABSORBER 3/4" MALE	EA	91.00
03.40.059.00	O-RING 1.312ID .096 FDA SILIC	EA	1.00
03.40.060.00	FHX TUBE BRUSH	EA	16.00
03.40.062F.00	1.5" ID TUBE 3.562" LG	EA	17.00
03.40.062R.00	1.5" ID TUBE 1.25" LG	EA	17.00
03.40.080.00	HOSE CLAMP SS .688"-1.25" RNG	EA	3.00
04.01.013.00	LEG 6" S.S.ADJ	EA	47.00
04.01.014.00	S.S.ADJ LEG FOR DECK MTG.	EA	63.25
04.01.038.00	TOGGLE SWITCH GUARD	EA	3.00
04.05.050.00	2/S TOAST COLLECTOR PAN	EA	38.00
04.05.051.00	3/S STANDARD COLLECTOR PAN	EA	53.00
04.05.060.00	BUSS BAR,"U"SHAPE,2.688"LONG	EA	1.00
04.05.061.00	BUSS BAR,HAT SHAPE,5"SPACING	EA	4.00
04.05.062.00	BUSS BAR,FLAT,1-1/4" SPACING	EA	1.00
04.05.063.00	BUSS BAR,HAT SHAPE,2 1/2" SPAC	EA	2.00
04.05.064.00	BUSS BAR,Z-SHAPE,2 1/2" LONG	EA	1.00
04.05.069.00	BUSS BAR JUMPER TQ-300	EA	2.00
04.05.070.00	FLAT BUSS BAR 4.125 LG	EA	2.00
04.05.073.00	TQ-XXX WIRE FEED RAMP	EA	109.00
04.05.074.00	TQ EXTENDED FEED RAMP	EA	82.00
04.05.075.00	TQ WIRE FEED RAMP-EXTENDED	EA	84.00
04.05.101.00	TK 2/S BASKET GUIDE	EA	45.00
04.05.121.00	TK 3/S BASKET GUIDE	EA	48.00
04.05.122.00	3/S CONVEYOR BASKET STD	EA	20.00
04.05.123.00	3/S HOLD DOWN BAR STD	EA	7.00
04.05.124.00	3/S CONVEYOR BASKET 5 1/2"HIGH	EA	26.00
04.05.141.00	TRH BASKET GUIDE	EA	36.00
04.05.142.00	2/S CONVEYOR BASKET STD	EA	17.00
04.05.143.00	2/S HOLD DOWN BAR STD	EA	5.00
04.05.144.00	TRH DAMPING SPRING	EA	2.00
04.05.150.00	2/S HOTDOG BUN HOLDDOWN BAR	EA	8.00
04.05.207.00	TQ BEARING SUPPORT	EA	3.00
04.05.211.00	TQ-300 TOAST TRAY ANODIZED	EA	35.00
04.05.215.00	TQ VANE ASSEMBLY	EA	27.00
04.05.216.00	TQ-300 RAMP	EA	27.00
04.05.218.00	TQ-300 CRUMB TRAY ASSEMBLY	EA	55.00
04.05.234.00	TQ-700 CRUMB TRAY ASSEMBLY	EA	61.00
04.05.235.00	TQ-700 RAMP	EA	33.00
04.05.238.00	TQ-700 TOAST TRAY ANODIZED	EA	41.00
04.05.252.00	TQ-700H WIRE FEEDER RAMP	EA	62.00
04.05.286.00	BEARING WITH BRKT, .375ID TQ	EA	22.00
04.05.310.00	PAN,TQ TOAST COLLECTOR	EA	24.00
04.05.311.00	TOAST CHUTE,TQ-800	EA	26.00
04.05.317.00	FEED RAMP,TQ,STANDARD	EA	62.00
04.05.333.00	TOAST CHUTE,TQ-400	EA	26.00
04.05.337.00	FEED RAMP,TQ SHORT	EA	62.00
04.05.357.00	BRACKET, TOP ELEMENT, TQ-800	EA	6.00
04.05.363.00	TOAST CHUTE,TQ-10	EA	27.00
04.05.384.00	PAN,TQ-800 TOAST COLLECTOR	EA	29.00
04.05.386.00	TQ SHAFT ASSEMBLY 1.15 WHEEL	EA	29.00



Replacement Parts Price List in US Dollars

January 1, 2012

Item	Description	Unit of Measure	List Price
04.05.387.00	BEARING ASSY,3/8" W/NUT	EA	22.00
04.05.563.00	SIDE COVER,RH, TM	EA	51.00
04.05.564.00	SIDE COVER,LH, TM	EA	51.00
04.05.575.00	BRKT,ELEMENT, TM	EA	6.00
04.05.582.00	CONVEYOR OUT PLATE, TM-5	EA	14.00
04.05.583.00	TOAST CHUTE, TM-5	EA	43.00
04.05.584.00	REAR TOAST CHUTE, TM-5	EA	38.00
04.05.610.00	SHAFT ASSY, TM-5	EA	28.00
04.05.611.00	FEED RAMP, TM-5	EA	51.00
04.05.612.00	UPPER REFLECTOR ASSY, TM-5	EA	24.00
04.05.615.00	UPPER REFLECTOR ASSY, TM-10	EA	28.00
04.05.619.00	TOP COVER, TM-10	EA	201.00
04.05.627.00	CONVEYOR OUT PLATE, TM-10	EA	16.00
04.05.628.00	TOAST CHUTE, TM-10	EA	43.00
04.05.629.00	REAR TOAST CHUTE, TM-10	EA	45.00
04.05.631.00	BAFFLE PLT, INNER TOP, TM-10	EA	92.00
04.05.640.00	FEED RAMP, TM-10	EA	30.00
04.06.015.00	PTD BLK 3CS/FR 1&2 ELE BOT COV	EA	25.00
04.06.200.00	RECON HTR SINK BASKET	EA	90.00
04.06.204.00	SINK BAFFLE PLATE RECON HTR	EA	42.00
04.06.210.00	TUBULAR LEGS 1" DIA 34" LONG	EA	31.00
04.08.042.00	GR HANGER TAB	EA	1.00
04.08.042.01	GR HANGER TAB, BLACK	EA	2.00
04.08.044.00	GR WALL MOUNTING BRKT	EA	43.00
04.08.060.00	NON-ADJ LEG FLG CLEAR ANODIZED	EA	8.00
04.08.061.00	END CVR, STD, 3.0" LG SQ LEG	EA	8.00
04.08.117.00	10" WIRE GUARD-CERAMIC ELEMENT	EA	12.00
04.08.121.00	6" WIRE GUARD-CERAMIC ELEMENT	EA	8.00
04.08.150.00	END CVR, HI-GLO, 3.0" LG	EA	8.00
04.08.469.00	T-LEG END MOUNT STABILIZER	EA	5.00
04.08.530.00	SPACE, NONADJ LEG FLG CLEAR ANO	EA	5.00
04.08.599.00	GR HANGER TAB, 3.75"	EA	1.00
04.09.051.00	END PLT, 6", RH	EA	8.00
04.09.078.00	GREY PLASTIC BULLNOSE CORNER	EA	9.00
04.09.078BK.00	BLACK PLASTIC BULLNOSE CORNER	EA	9.00
04.09.200.00	TRIVET, FULL SIZE, PLATED	EA	52.00
04.09.201.00	END PLT, 6", FRT, FF/FFB W/O SUP	EA	8.00
04.09.202.00	END PLT, 6", REAR, FF/FFB W/BRKT	EA	8.00
04.09.205.00	PAN, FULL SIZE, 2-1/2" DEEP, 22GA	EA	63.00
04.09.206.00	PAN, FULL SIZE, 4" DEEP, 22GA	EA	78.00
04.09.208.00	TRIVET, 1/2 SIZE, PLATED	EA	46.00
04.09.210.00	PAN, 1/2 SIZE, 2-1/2" DEEP, 22GA	EA	52.00
04.09.211.00	PERF FLSE BOTT FOR 1/2 SIZ PAN	EA	12.00
04.09.213.00	TONGS, 9" LONG SS	EA	7.00
04.09.214.00	PAN GRIPPER	EA	11.00
04.09.218.00	PAN, 1/3 SIZE, 2-1/2" DEEP	EA	46.00
04.09.224.00	TRIVET, 1/2 SIZE, SS	EA	91.00
04.09.225.00	PAN, 1/2 SIZE, PLASTIC	EA	47.00
04.09.226.00	PAN LID, 1/2 SIZE, PLASTIC	EA	31.00
04.09.227.00	PAN, 1/4 SIZE, AMBER PLASTIC	EA	31.00



Replacement Parts Price List in US Dollars

January 1, 2012

Item	Description	Unit of Measure	List Price
04.09.228.00	TRIVET,1/4 SIZE,SS	EA	71.00
04.09.229.00	TRIVET,FULL SIZE,SS	EA	111.00
04.09.230.00	PAN,FULL SIZE,6" DEEP,22GA	EA	88.00
04.09.231.00	PAN,SPILLAGE,HDW	EA	189.00
04.09.235.00	PAN,15x20x5" DEEP	EA	220.00
04.09.236.00	PAN,1/2 SIZE,SS,4" DEEP	EA	74.00
04.09.402.00	1" DIA X 4" LG PT POST FFB UPPER	EA	11.00
04.09.403.00	END CVR,PIVOT POST,CTRD FFB	EA	35.00
04.09.404.00	SWIVEL SUPT W/NUT & 2 WASHERS	EA	36.00
04.09.405.00	END PLT,6",REAR,FFB W/ELEM SUP	EA	19.00
04.09.409.00	HOLD DOWN CLAMP	EA	7.00
04.09.410.00	PAN RAIL FOR HEATED BASE	EA	29.00
04.09.425.00	FRY STATION BRACKET W/HOLES	EA	6.00
04.09.426.00	SUPPORT BRACKET ASSEMBLY	EA	37.00
04.09.506.00	END CVR,PIVOT POST,OFF CENTER	EA	37.00
04.09.676.00	PAN,FULL SIZE,6"DEEP,22GA,PERF	EA	150.00
04.09.701.00	PAN,11 QT ROUND	EA	95.00
04.09.702.00	PAN,7 QT ROUND	EA	85.00
04.09.703.00	PAN,4-1/8 QT ROUND	EA	75.00
04.09.704.00	LID,11 QT ROUND,W/NOTCH	EA	56.00
04.09.705.00	LID,7 QT ROUND,W/NOTCH	EA	46.00
04.09.711.00	LID,4.1 QT ROUND,W/NOTCH	EA	36.00
04.09.746.00	LID,4QT,HINGED,SOUP WELL	EA	42.00
04.09.769.00	LID,7QT,HINGED,SOUP WELL	EA	52.00
04.09.770.00	LID,11QT,HINGED,SOUP WELL	EA	62.00
04.12.006.00	GRSDS-36 SIGN HOLDER INSERT	EA	38.50
04.12.007.00	GRSDS-41 SIGN HOLDER INSERT	EA	38.50
04.12.008.00	GRSDS-52 SIGN HOLDER INSERT	EA	44.50
04.12.009.00	GRSDS-30 SIGN HOLDER INSERT	EA	31.50
04.12.038.00	END PANEL,REMOVABLE,GRKW	EA	60.00
04.15.112.00	GRSDS GR2SD DIV ROD 22.875"	EA	18.00
04.15.143.00	GRSDS 30 SIGN HOLDER ASSY	EA	31.50
04.15.144.00	GRSDS 36 SIGN HOLDER ASSY	EA	38.50
04.15.145.00	GRSDS 41 SIGN HOLDER ASSY	EA	38.50
04.15.275.00	GRSDH SERIES DIV ROD 18.25"	EA	18.00
04.15.338.00	GRCW SWITCH COVER	EA	5.00
04.15.700.00	GRTB-XX S.S. DIVIDER	EA	15.00
04.15.753.00	GRSDS-30 SS CHANNEL DIVIDER	EA	32.00
04.15.754.00	GRSDS-36 SS CHANNEL DIVIDER	EA	36.00
04.15.755.00	GRSDS-41 SS CHANNEL DIVIDER	EA	44.00
04.15.756.00	GRSDS-52 SS CHANNEL DIVIDER	EA	57.00
04.16.488.00	LEG 6" SS ADJ 1/2x3/4" LG STUD	EA	35.75
04.16.547.00	HDW 3/8-16 LEG BRACKET	EA	8.00
04.16.551.00	HDW 1/2-13 LEG BRACKET	EA	8.00
04.16.635.00	HDW 2" CASTER W/MOUNTING PLATE	EA	46.75
04.16.638.00	HDW SEALED BEARING DRWR ROLLER	EA	23.00
04.16.645.00	HDW 2" LOCK CASTER W/MTG PLT	EA	50.00
04.16.732.00	HDW CHIP GUARD	EA	44.00
04.16.808.00	HDW-R CORE SIDES/BOTTOM-ITC	EA	68.00
04.16.815.00	HDW-R UPPER CORE BEZEL-ITC	EA	114.00



Replacement Parts Price List in US Dollars

January 1, 2012

Item	Description	Unit of Measure	List Price
04.16.816.00	HDW-R LOWER CORE BEZEL-ITC	EA	114.00
04.16.817.00	HDW CONTROL ASSY-ITC	EA	28.00
04.16.828.00	HDW-R SINGLE CORE BEZEL-ITC	EA	106.00
04.17.001.00	MAGNET STRIKER PLATE (PLATED)	EA	5.00
04.17.009.00	DOOR HINGE,FS	EA	5.00
04.17.010.00	FS 3 TRAY SLANT RACK	EA	214.00
04.17.014.00	FST 5 TIER CIRCLE PAN RACK	EA	211.00
04.17.026.00	FS 3 TRAY PASS THRU RACK	EA	211.00
04.17.027.00	FST 4 TRAY SLANT RACK	EA	218.00
04.17.029.00	FS 4 TIER CIRCLE PAN RACK	EA	208.00
04.17.030.00	FST 4 TIER CIRCLE PAN RACK	EA	185.00
04.17.031.00	FS 3 TIER CIRCLE PAN RACK	EA	174.00
04.17.032.00	FST 4 RNG PIZZA RCK W/PN RETAN	EA	208.00
04.17.077.00	SERVICE FST 3TIER PRETZEL RACK	EA	223.00
04.17.079.00	FDW PRETZEL RACK	EA	214.00
04.17.095.00	PTD BLK FS HOOD	EA	75.00
04.17.130.00	3"DIA 4"CLEARANCE CASTER W/BRK	EA	46.75
04.17.132.00	5"DIA 6"CLEARANCE CASTER W/BRK	EA	95.00
04.17.142.00	HC LONG DOOR HINGE	EA	6.00
04.17.144.00	ADJUSTABLE SLIDE	EA	32.00
04.17.182.00	DRIVE LINK,FS RACK MOTOR	EA	26.00
04.17.183.00	DRIVE LINK COUPLING	EA	9.00
04.17.187.00	PAN,15",PERFORATED PIZZA	EA	30.00
04.17.188.00	PAN,16",PERFORATED PIZZA	EA	31.00
04.17.189.00	PAN,18",PERFORATED PIZZA	EA	33.00
04.17.192.00	PAN,14",PERFORATED PIZZA	EA	28.00
04.17.311.00	CHIP DEFLECTOR MACHO NACHO	EA	46.00
04.17.314.00	L.H. FLOOR MACHO NACHO	EA	73.00
04.17.316.00	BLOWER HEATER ASSY MACHO NACHO	EA	83.00
04.17.325.00	FST-1-MN FRONT FACE ASSY	EA	202.00
04.17.326.00	LH FRONT FACE MTG ASSY	EA	41.00
04.17.327.00	RH FRONT FACE MTG ASSY	EA	41.00
04.17.334.00	FS WATER RESERVOIR ASY W/DRAIN	EA	209.00
04.17.400.00	CHICKEN BASKET WFST	EA	50.00
04.17.434.00	WFST DOOR SEAL ASSY 24.875" LG	EA	40.00
04.17.440A.00	WFST-1X,2X REMOVABLE SHELF	EA	88.00
04.17.480.00	WFST SS CABLE W/10-24 FITTINGS	EA	56.00
04.17.616A.00	SERVICE FSD MALE HINGE PIN A	EA	8.00
04.17.616B.00	SERVICE FSD MALE HINGE PIN B	EA	8.00
04.17.625.00	WATER TANK ASSY FSD,SERVICE	EA	109.00
04.17.640.00	FSD 3 TIER CIRCLE RACK W/RET	EA	171.00
04.17.641.00	FSDT 4 TIER CIRCLE RACK W/RET	EA	181.00
04.17.642.00	FSDT 5 TIER CIRCLE RACK W/RET	EA	206.00
04.17.649.00	SERVICE,STRIP-DOOR FSD/FSDT	EA	1.00
04.17.689.00	FSDT 3 TIER PRETZEL TREE	EA	243.00
04.17.709.00	FSDT 4 TIER CIR RACK W/RET	EA	208.00
04.17.733.00	2"DIA 3"CLEARANCE CASTER W/BRK	EA	56.00
04.17.825.01	AIR CHAMBER ASSY,1 ELEM,FSHC-7	EA	229.00
04.17.825.02	AIR CHAMBER ASSY,2 ELEM,FSHC-7	EA	307.00
04.19.149.00	2 PAN RACK FOR BUFFET WARMER	EA	143.00



Replacement Parts Price List in US Dollars

January 1, 2012

Item	Description	Unit of Measure	List Price
04.19.150.00	3 PAN RACK FOR BUFFET WARMER	EA	153.00
04.19.254.00	HRDCTD SANDWICH BIN	EA	29.00
04.19.603.00	GRDW-1 CLEAR FRONT PANEL	EA	123.00
04.19.604.00	GRDW-1 CLEAR LH SIDE PANEL	EA	81.00
04.19.605.00	GRDW-1 CLEAR RH SIDE PANEL	EA	81.00
04.19.989.00	REMOV PANINI RACK,GRHW-1SGDN	EA	93.00
04.19.995.00	REMOV PANINI RACK,GRHW-1SGD	EA	83.00
04.20.019.00	SURF MTG HI-LMT BRKT RECON HTR	EA	3.00
04.22.030.00	PAN RAIL GRHD 2 PAN	EA	115.00
04.22.031.00	PAN RAIL GRHD 3 PAN	EA	128.00
04.22.032.00	PAN RAIL GRHD 4 PAN	EA	229.00
04.22.052.00	SANDWICH SLIDE-LOWER GRHD-XPD	EA	23.00
04.22.053.00	SANDWICH SLIDE-UPPER GRHD-XPD	EA	11.00
04.22.057.00	UPPER SEPARATOR GRHD-2PD	EA	17.00
04.22.058.00	UPPER SEPARATOR GRHD-3PD & 4PD	EA	11.00
04.22.059.00	LOWER SEPARATOR GRHD-2PD	EA	23.00
04.22.060.00	LOWER SEPARATOR GRHD-3PD & 4SD	EA	23.00
04.22.111.00	GRHD 2PD PAN STOP-UPPER SHELF	EA	15.00
04.22.112.00	GRHD 3PD PAN STOP-UPPER SHELF	EA	20.00
04.22.113.00	GRHD 4PD PAN STOP-UPPER SHELF	EA	31.00
04.22.400.00	GRHDH PAN DIVIDER	EA	31.00
04.22.403.00	GRHDH WATER TROUGH ASSY	EA	57.00
04.22.406.00	GRHDH 2 PAN ENCLOSURE ASSY	EA	167.00
04.22.407.00	GRHDH SINGLE PAN ENCL ASSY	EA	79.00
04.24.004.00	FDW BLK PTD HOOD	EA	46.00
04.24.020.00	FDW HINGE MOUNTING BRACKET	EA	6.00
04.24.023.00	FDW-1 HINGE PIN	EA	4.00
04.24.025.00	FDW 4 TIER CIRCLE RACK W/RET	EA	181.00
04.24.029.00	FDW 3 RING PIZZA RACK	EA	154.00
04.24.063.00	FDW-1-MN FRONT FACE ASSEMBLY	EA	162.00
04.24.064.00	FDW-1-MN CHIP DEFLECTOR	EA	35.00
04.24.261.00	FDWD-12 4 TIER CIRCLE RACK	EA	186.00
04.24.301.00	FDWD 4TCR WITH RETAINERS	EA	188.00
04.24.333.00	3 TIER PIZZA RACK W/RET,FDWD	EA	152.00
04.25.126.00	ADJUSTABLE END BRACKET HL	EA	9.50
04.25.225.00	RAISED WIRE GUARD 1/2 SZ CRMC	EA	26.00
04.25.226.00	RAISED WIRE GUARD FULL SZ CRMC	EA	51.00
04.25.265.00	CARVING STATION SS BASE PAN	EA	221.00
04.25.267.00	CUTTING BOARD,MAPLE 24x18x1.75	EA	205.00
04.25.374.00	BRKT,ADJ ANGLE,1-2" DROP	EA	9.50
04.25.413.00	SCOOP HOLDER,GRFHS HANG-ON	EA	42.00
04.25.528.00	PAN,MPWS-XX,14.25 X 24.25	EA	246.00
04.25.577.00	BRKT,ADJ ANGLE,2.5-3.5" DROP	EA	11.00
04.26.003.00	4"DIA 5"CLEARANCE CASTER RIGID	EA	38.00
04.26.004.00	4"DIA 5"CLEARANCE CASTER SWIVL	EA	55.50
04.26.007.00	PAN,FULL SIZE,ALUM,SHEET 18x26	EA	27.00
04.26.034.00	5"DIA 6"CLEARANCE CASTER SWIVL	EA	82.00
04.26.035.00	5"DIA 6"CLEARANCE CASTER RIGID	EA	71.00
04.26.092.00	PAN,1/2 SIZE,ALUM,SHEET 13x18	EA	21.00
04.28.077.00	PMG-100,200 EXH OUTLET BOX	EA	20.00



Replacement Parts Price List in US Dollars

January 1, 2012

Item	Description	Unit of Measure	List Price
04.30.020.00	UPPER BEARING RETAINER	EA	4.00
04.30.021.00	LOWER BEARING RETAINER	EA	4.00
04.30.022.00	ADJUSTABLE BEARING RETAINER	EA	4.00
04.35.004.00	DRAWER SLIDE ROLLER	EA	9.00
04.37.100.00	WIRE GUARD,MODULAR,,260 ELEM	EA	11.00
04.37.101.00	WIRE GUARD,MODULR,SS,,260 ELEM	EA	21.00
04.37.145.00	WIRE GUARD,,260 ELEM,PLATED	EA	11.00
04.38.099.00	SERVICE,DIVIDER ROD,GR3	EA	19.00
04.38.361.00	GR3 DIV ROD 23.5"	EA	18.00
04.40.007.00	CLR GLASS PNL,17 1/16 X 19 1/4	EA	49.00
04.40.008.00	CLR GLASS PN,22 1/16 X 19 1/4	EA	51.00
04.40.010.00	CLR GLASS PN,19 1/4 X 23 1/16	EA	57.00
04.40.025.00	SIDE & REAR TEMP GLASS FDW	EA	44.00
04.40.038.00	END PANEL,GLASS,GRSDS-XXD	EA	73.00
04.40.041.00	END PANEL,GLASS,GRSDS-XX	EA	55.00
04.40.046.00	GRSDH-XXD END GLASS	EA	51.00
04.40.047.00	END PANEL,GLASS,GRSDH-XX	EA	57.00
04.40.049.00	CLEAR SIDE PANEL	EA	35.00
04.40.071.00	GRHD 3PD GLASS FRONT W/EDGING	EA	48.00
04.40.072.00	GRHD 4PD GLASS FRONT W/EDGING	EA	92.00
04.40.091.00	GRCD-XPD GLASS END PANEL	EA	75.00
04.40.105.00	GRCD-XP SIDE GLASS	EA	72.00
04.40.112.00	FSD SIDE GLASS	EA	43.00
04.40.114.00	FSDT SIDE GLASS	EA	44.00
04.40.121.00	END PANEL,GLASS,GR2SDS	EA	57.00
04.40.135.00	GRPWS-XX24D END GLASS	EA	57.00
04.40.158.00	GLASS,SIDE,GR2SDS FULL	EA	54.00
04.40.160.00	GR2SDH 12" SHELF SIDE GLASS	EA	50.00
04.40.202.00	END PANEL,GLASS,SDSD,12" OPEN	EA	134.00
04.40.234.00	END PANEL,GLASS,SDS-XXD,SIDESW	EA	131.00
04.40.254.00	GLASS,SIDE,FDWD,16.594X19.5	EA	47.00
04.40.295.00	GLASS,MIRROR PNL,GRCMW-1DH	EA	196.00
04.40.336.00	GLASS END,,RH,3SDS-XXT	EA	73.00
04.40.337.00	GLASS END,,LH,3SDS-XXT	EA	73.00
04.42.009.00	CONTROL BEZEL,INCLINED,UNPNTD	EA	36.00
04.42.009.02	CONTROL BEZEL,INCLINED,GRAY GR	EA	49.00
04.42.012.00	CONTROL PANEL,BASE,HWB	EA	28.00
04.42.013.00	CONTROL PANEL,HWB	EA	11.00
04.42.059.00	CNTL BEZEL,SMALL BOX,HWB,UNPTD	EA	3.00
04.42.110.00	T-STAT GUARD	EA	8.00
04.42.149.00	PAN,4 QT,SS	EA	73.00
04.44.007.00	HQT SINGLE SERVE RACK	EA	76.00
04.46.032.00	PAN,CONTAINER,SERVE RITE	EA	33.00
04.46.033.00	PAN,CARVING,1/1,SERV RITE	EA	136.00
04.46.039.00	REFLECTOR,SERVE RITE	EA	6.00
04.46.045.00	CUTTING BOARD,SERVE RITE	EA	161.00
04.48.083.00	SHELF RACK,ADJUSTABLE,LFST-48	EA	130.00
04.48.093.00	REMOVABLE SHELF,LFST-48	EA	151.00
04.48.103.00	WIRE RACK,FSHC-7,CHURCHS	EA	133.00
04.48.526.00	WIRE RACK,FSHC,SS	EA	81.00



Replacement Parts Price List in US Dollars

January 1, 2012

Item	Description	Unit of Measure	List Price
05.01.018.00	LUBE REAR BEARING LUBE-SHC 624	EA	4.00
05.01.019.00	LUBE CHEMLUBE 645 SYN IMPRGNAT	EA	4.00
05.01.023.00	LUBE SYNTHETIC GEAR LUBRICANT	EA	8.00
05.02.003.00	BEARING TK INNER CLUTCH RACE	EA	47.00
05.02.004.00	BEARING ONE WAY ROLLER CLUTCH	EA	54.00
05.02.011.00	BEARING HUB ASSEMBLY	EA	16.00
05.02.012.00	BEARING FLANGED WFST	EA	5.00
05.03.003.00	CHAIN 40 PITCH W/LINK	EA	7.00
05.03.004.00	CHAIN SPRING CLIP CONN LINK	EA	2.00
05.03.006.00	CHAIN 34 PITCH W/LINK	EA	7.00
05.03.009A.00	CHAIN CONNECTOR LINK	EA	3.00
05.03.020.00	CHAIN 14 SINGLE STEEL JACK	FT	5.00
05.03.021.00	CHAIN 12 SINGLE STEEL JACK	FT	5.00
05.03.022.00	CHAIN S.S. TQ-300 CONVEYOR	EA	80.00
05.03.023.00	PIN PLT 1/8" X 1" GROOVE ZNC	EA	1.00
05.03.024.00	CHAIN S.S. TQ-700 CONVEYOR	EA	112.00
05.03.035.00	WIRE BELT,10x.5x72 LINKS	EA	101.00
05.03.036.00	WIRE BELT,10x.5x51 LINKS	EA	101.00
05.03.037.00	CHAIN 30 PITCH W/LINK	EA	7.00
05.03.038.00	CHAIN 35 PITCH	EA	7.00
05.03.039.00	CABLE PULLBOX PLUS 5LB	EA	39.00
05.03.046.00	WIRE BELT,14x.5x72 LINKS	EA	183.00
05.03.053.00	CHAIN,14 GA,6",SINGLE,STEEL	EA	2.00
05.03.054.00	S-HOOK,CLOSED,.121 X 1,STEEL	EA	0.50
05.03.055.01	MECHANICAL REEL,BASE MT,0.5LB	EA	149.00
05.03.055.02	MECHANICAL REEL,BASE MT,1.0LB	EA	149.00
05.03.056.00	CHAIN,ROLL,1/4P X 1/8W 14.5"L	EA	20.00
05.03.057.00	WIRE BELT,6.875x.5x51 LINKS	EA	93.00
05.04.002.00	SC PLT 10-32X5/16 PH PAN TCS F	EA	2.00
05.04.004.00	RIV ALUM 1/8 DRIVE	EA	1.00
05.04.005.00	SC PLT 8-32X5/16 ZNC PH	EA	0.10
05.04.022.00	BLT PLT 3/8-16X1 PKRZ SQ MACH	EA	0.50
05.04.028.00	NUT PLT 3/8-16 PKRZ HEX NUT	EA	0.10
05.04.047.00	NUT ALUM 10-32 HD RIVNUT CLSD	EA	1.00
05.04.059.00	NUT PLT 8-32 BNP CAPTIVE	EA	2.00
05.04.062.00	SC PLT 1/4-28X3/8 SL HX WS MS	EA	0.50
05.04.068A.00	NUT PLT 8-32 NI ACORN	EA	0.50
05.04.070.00	NUT PLT 10-32 ACORN LOW CROWN	EA	0.50
05.04.074.00	SC PLT 10-32X5/16 NI PH PN	EA	0.10
05.04.077.00	RING PLT 5/16 PUSH ON RETAIN	EA	0.50
05.04.087.00	SPC PLT 3/8-16X3/4 .48OD SHLDR	EA	3.00
05.04.105.00	NUT PLT 8-32 LOWCRWN ACORN 2PC	EA	0.50
05.04.117.00	SC SS 10-32X1-3/4 PH RD MACH	EA	1.00
05.04.118.00	SC SS 10-32X3 SL RD MACH	EA	1.00
05.04.128.00	SC SS 1/4-20X1-3/4 PH TR	EA	0.75
05.04.139.00	SC SS 8-32X3/8 WSHR HD THUMB	EA	3.00
05.04.140.00	SPC SS 10-32X3/16 THUMB	EA	4.00
05.04.144.00	SC SS 10-32X4 SL RD MACH	EA	3.00
05.04.145.00	SC SS 10-32x2-1/4 SL RD MACH	EA	3.00
05.04.146.00	SC SS 1/4-20 HINGE SCREW	EA	2.00



Replacement Parts Price List in US Dollars

January 1, 2012

Item	Description	Unit of Measure	List Price
05.04.149.00	SPC SS 1/4-20X5/16 SHOULDER	EA	3.00
05.04.150.00	PIN-DIVIDER LOCATNG,1/4-20,PLT	EA	3.00
05.04.151.00	WNUT CRS 1/4-20 DUAL SPUR	EA	2.00
05.04.153.00	SC PLT 1/4-28X3/4 PH PAN MACH	EA	1.00
05.04.163.00	NUT PLT 10-32 TRIC NUT	EA	1.00
05.04.201.00	BLT SS 1/4-20X1/2 HEX GRADE 2	EA	1.00
05.04.202.00	BLT SS 1/4-20X1 HEX GRADE 2	EA	2.00
05.04.203.00	SPC SS 1/4-20x1-1/4 HEX BOLT	EA	4.00
05.04.205.00	NUT PLT 1/4-20 KEPS NUT	EA	1.00
05.04.210.00	NUT SS 1/4-20 HEX ACORN	EA	1.00
05.04.211.00	SC SS 8-32X3/8 ONE WAY MACH	EA	1.00
05.04.219.00	SPC SS 10-32X.531 THUMB SCREW	EA	5.00
05.04.257.00	RING PLT .375 SNAP RETAIN WFST	EA	1.00
05.04.305.00	SPC SS 8-32X1/2 THUMBSCREW	EA	5.00
05.04.325.00	NUT SS 8-32 TINNERMAN FASTNER	EA	1.00
05.04.351.00	NUT SS 10-32 CAP NUT	EA	1.00
05.04.352.00	PIN SS .090 COTTER PIN	EA	1.00
05.04.354.00	HEYCO NYLON 6/6 HOSE CLAMP	EA	1.00
05.04.357.00	SPACER PLT #6X7/32X3/8 BRASS	EA	4.00
05.04.414.00	SC PLT 1/4-20x3/8 WING	EA	3.00
05.04.441.00	NUT SS 4-40 ACORN	EA	1.00
05.04.443.00	NUT SS 6-32 ACORN	EA	1.00
05.04.486.00	STUD SS 8-32X5/8 WELD SCREW	EA	1.00
05.04.535.00	SC PLT 8-32X3-1/2 PH PN MACH	EA	1.00
05.04.536.00	SC PLT 8-32X2-1/2 PH PN MACH	EA	1.00
05.04.549.00	SC SS 8X3/8 HX WSHR SMS,410	EA	0.00
05.04.550.00	HOSE CLAMP,1/2" BAND,.438-1.0	EA	1.00
05.06.002.00	RUB #4151 - CHANNEL EXTRUSION	FT	1.00
05.06.003.00	RUB 1-3/4" WHITE STOPPER	EA	2.00
05.06.005.00	GASKET 3CS ELEMENT	EA	2.00
05.06.006.00	RUB 1.0ID 2.5OD .188 BLK EPDM	EA	2.00
05.06.008.00	GROMMET BLACK MOLDED	EA	2.00
05.06.009.00	GASKET,STRAINER NUT NSF APPROV	EA	1.00
05.06.010.00	RUB BLACK HOSE ASSEMBLY	EA	48.00
05.06.010A.00	WASH NEOPRENE 80 DURO WHITE	EA	1.00
05.06.021.00	RUB WINDOW CHANNEL SEAL	FT	2.00
05.06.024.00	RUB GLASING CHANNEL 1/4"	FT	3.00
05.06.026.00	RUB 1-3/8" WHITE STOPPER	EA	2.00
05.06.028.00	GASKET, SILICONE, .125 X .500	FT	5.00
05.06.029.00	NUT RUB EXPANSION FS LW PROBE	EA	2.00
05.06.035.00	PLUG NEOPRENE SEAL CORNER POST	EA	3.00
05.06.036.00	LEG RUBBER FEET SUCTION W8-32	EA	1.00
05.06.038.00	LEG MOLDED TIP RUBBER FOOT	EA	1.00
05.06.039.00	RUB END CAP 15/64ID	EA	1.00
05.06.066.00	PMG 5/8" HOT WATER CONN GASK	EA	1.00
05.06.096.00	GASKET ELEMENT,BUNDLED	EA	15.00
05.06.097.00	NYLON COLLAR,POST BOT,SERVE RT	EA	1.00
05.06.098.00	NYLON COLLAR,POST,SERVE RITE	EA	1.00
05.06.099.00	ELLIP SPACER,POST,SERVE RITE	EA	1.00
05.07.004.00	SHAFT LOWER REAR DRIVE 3S	EA	29.00



Replacement Parts Price List in US Dollars

January 1, 2012

Item	Description	Unit of Measure	List Price
05.07.005.00	SHAFT UPPER 3S	EA	29.00
05.07.006.00	SHAFT LOWER FRONT	EA	29.00
05.07.007.00	SHAFT 2/S CONVEYOR	EA	29.00
05.07.008.00	UPPER SHAFT 2/S CONVEYOR	EA	29.00
05.07.009.00	LOWER SHAFT 2/S CONVEYOR	EA	29.00
05.07.011.00	SHAFT REAR AXLE	EA	29.00
05.08.001.00	SPRING EXTENSION	EA	1.00
05.08.004.00	PIN PLT SEL-LOC SPRG 3/32X7/16	EA	1.00
05.08.005.00	SPRING COMPRESSION	EA	2.00
05.08.006.00	PIN SS SEL-LOC SPRING 1/8X3/4	EA	1.00
05.08.007.00	PIN PLT SEL-LOC SPRG 1/8X7/16	EA	1.00
05.08.008.00	PIN CRS 5/32x3/4 ALLOY GROOVE	EA	2.00
05.08.014.00	WIRE ROD .134 X 6.625" LG	EA	3.00
05.08.023.00	SPRING,HINGE,LH	EA	12.00
05.08.024.00	SPRING,HINGE,RH	EA	12.00
05.09.020.00	SPROCKET 10 TOOTH 3/8" BORE	EA	16.00
05.09.023.00	SPROCKET 11 TOOTH DRIVE	EA	19.00
05.09.025.00	SPROCKET 14 TOOTH .312 BORE	EA	26.00
05.09.027.00	SPROCKET 10 TOOTH .312 BORE	EA	26.00
05.09.028.00	SPROCKET 12 TOOTH .312 BORE	EA	28.00
05.09.029.00	SPROCKET 12 TOOTH .375 BORE	EA	28.00
05.09.030.00	SPROCKET 14 TOOTH .375 BORE	EA	28.00
05.09.031.00	SPROCKET W/CLUTCH ASSEMBLY	EA	68.00
05.09.032.00	SPROCKET 10 TOOTH HARD 3/8 ID	EA	20.00
05.09.033.00	SPROCKET 17 TOOTH .312 BORE	EA	26.00
05.09.040.00	SPROCKET	EA	32.00
05.09.041.00	CONVEYOR DRIVE GEAR,TQ-300SRVC	EA	49.00
05.09.042.00	CHAIN CONVEYOR IDLER	EA	17.00
05.09.045.00	SPROCKET 17 TOOTH .375 BORE	EA	29.00
05.09.055.00	SPROCKET,CONVEYOR,TM-10H	EA	55.00
05.09.056.00	SPROCKET,MOTOR,TM,16 TOOTH	EA	33.00
05.10.003.00	STRAP BOOSTER TANK 36"	EA	14.00
05.11.004.00	WASH NYL BLACK NYLON THRUST	EA	5.00
05.11.006.00	WASH NYL WHITE 1/2"X.317X.032	EA	1.00
05.11.007.00	WASH NYL WHITE 1/2"X.317X.062	EA	1.00
05.11.008.00	WASH PLT 1/4" ZNC LOCKWASHER	EA	1.00
05.11.020.00	WASH SS 3/4" FLAT PUNCHED	EA	2.00
05.11.022.00	SPACER 3/8X1/2 ZNC PLT CEM	EA	1.00
05.11.033.00	WASH NYL .365-.370ID .5 OD	EA	1.00
05.11.035.00	RING SS AXLE RETAINING E-RING	EA	2.00
05.30.001.00	KNOB,MANUAL ADVANCE-TOASTER	EA	14.00
05.30.005.00	MAGNET SINGLE MOLDED PLASTIC	EA	6.00
05.30.007.00	LEG 4" BLACK COUNTER APPLIANCE	EA	10.50
05.30.009A.00	NUT BRS 1-1/2" BRASS LOCKNUT	EA	7.00
05.30.013.00	PLUG,BLACK CAP,1" DIA TUBE	EA	1.00
05.30.018.00	KNOB INFINITE SWITCH GR & GRHD	EA	9.00
05.30.019.00	KNOB,INF SWITCH TOASTER FRS	EA	9.00
05.30.020.00	KNOB,1.5 OD .25 ID SET SCREW	EA	9.00
05.30.021.00	KNOB,FR CONTROL	EA	9.00
05.30.026.00	MAGNET FOR FDW-1	EA	5.00



Replacement Parts Price List in US Dollars

January 1, 2012

Item	Description	Unit of Measure	List Price
05.30.027.00	MAGNET STRIKER PLATE FDW-1	EA	8.00
05.30.032.00	KNOB DW D-10 1/4-20 STUD 11406	EA	4.00
05.30.039.00	KNOB,BASE THERMOSTAT BULB&CAP	EA	5.00
05.30.040.00	LEG 2-1/2" BLACK PLASTIC ADJ.	EA	6.00
05.30.042.00	KNOB,ELEC INFINITE POTENT	EA	9.00
05.30.043.00	KNOB FOR EGO INFINITE SWITCH	EA	7.00
05.30.044.00	LEG 3/8-16x3/8 BLK RUBBER FOOT	EA	2.00
05.30.047.00	KNOB HDW CONTROL EGO	EA	9.00
05.30.048.00	KNOB,10-32x3/8 STUD,BLACK	EA	7.00
05.30.064.00	2 1/2" DIA RUBBER FOOT W/WASH	EA	6.00
05.30.069.00	LEG 6" BLACK PLASTIC 1/2"-13	EA	13.00
05.30.070.00	LEG 6" SS 1/2"-13	EA	40.00
05.30.082.00	KNOB,.906 OD .25 ID,SET SCREW	EA	9.00
05.30.126.00	KNOB,CTRL,W/SETSCREW,SERV-RITE	EA	11.00
05.30.150.00	SERVICE,4"DIA 5"CLR CAST SWIVL	EA	21.00
07.01.034.00	SW PLATE FOR MULTI INF SW	EA	4.00
07.01.035.00	GR W/MULT TOG SW PLATE	EA	4.00
07.01.058.00	TOGGLE SWITCH PLATE ON-OFF	EA	1.00
07.01.179.00	HDW CONTROL FACE PLATE	EA	15.00
07.01.180.00	HDW HANDLE LOGO	EA	2.00
07.01.200.00	SWITCH PLATE,ELEC INFINITE	EA	5.00
07.01.300.00	TOGGLE SWITCH PLATE,DL,I-O	EA	3.00

HATCO AUTHORIZED PARTS DISTRIBUTORS

ALABAMA

Jones McLeod Appl. Svc.
Birmingham 205-251-0159

ARIZONA

Service Solutions Group
Phoenix 602-234-2443

Byassee Equipment Co.
Phoenix 602-252-0402

CALIFORNIA

Industrial Electric
Commercial Parts & Service, Inc.
Huntington Beach 714-379-7100

Chapman Appl. Service
San Diego 619-298-7106

P & D Appliance
Commercial Parts & Service, Inc.
S. San Francisco 650-635-1900

COLORADO

Hawkins Commercial Appliance
Englewood 303-781-5548

FLORIDA

Whaley Foodservice Repair
Jacksonville 904-725-7800

3Wire Nass Service Co., Inc.
Orlando 407-425-2681

B.G.S.I.
Pompano Beach 954-971-0456

Comm. Appliance Service
Tampa 813-663-0313

GEORGIA

TWC Services
Mableton 770-438-9797

Heritage Service Group
Norcross 866-388-9837

Southeastern Rest. Svc.
Norcross 770-446-6177

HAWAII

Burney's Comm. Service, Inc.
Honolulu 808-848-1466

Food Equip Parts & Service
Honolulu 808-847-4871

ILLINOIS

Parts Town
Lombard 708-865-7278

Eichenauer Elec. Service
Decatur 217-429-4229

Midwest Elec. Appl. Service
Elmhurst 630-279-8000

Cone's Repair Service
Moline 309-797-5323

INDIANA

GCS Service
Indianapolis 317-545-9655

IOWA

Electric Motor Service Co.
Davenport 319-323-1823

Goodwin Tucker Group
Des Moines 515-262-9308

KENTUCKY

Service Solutions Group
Lexington 859-254-8854

Service Solutions Group
Louisville 502-451-5411

LOUISIANA

Chandlers Parts & Service
Baton Rouge 225-272-6620

MARYLAND

Electric Motor Service
Baltimore 410-467-8080

GCS Service
Silver Spring 301-585-7550

MASSACHUSETTS

Ace Service Co., Inc.
Needham 781-449-4220

MICHIGAN

Bildons Appliance Service
Detroit 248-478-3320

Commercial Kitchen Service
Bay City 517-893-4561

Midwest Food Equip. Service
Grandville 616-261-2000

MINNESOTA

GCS Service
Plymouth 800-345-4221

MISSOURI

General Parts
Kansas City 816-421-5400

Commercial Kitchen Services
St. Louis 314-890-0700

Kaemmerlen Parts & Service
St. Louis 314-535-2222

NEBRASKA

Anderson Electric
Omaha 402-341-1414

NEVADA

Burney's Commercial
Las Vegas 702-736-0006

Hi. Tech Commercial Service
N. Las Vegas 702-649-4616

NEW JERSEY

Jay Hill Repair
Fairfield 973-575-9145

Service Plus
Flanders 973-691-6300

NEW YORK

Acme American Repairs, Inc.
Brooklyn 718-456-6544

Alpro Service Co.
Brooklyn 718-386-2515

Appliance Installation
Buffalo 716-884-7425

Duffy's Equipment Services, Inc.
Buffalo 800-836-1014

3Wire Northern
Plattsburgh 800-634-5005

Duffy's Equipment Services, Inc.
Sauquoit 800-836-1014

J.B. Brady, Inc.
Syracuse 315-422-9271

NORTH CAROLINA

Authorized Appliance
Charlotte 704-377-4501

OHIO

Akron/Canton Comm. Svc. Inc.
Akron 330-753-6635

Service Solutions Group
Cincinnati 513-772-6600

Commercial Parts and Service
Columbus 614-221-0057

Electrical Appl. Repair Service
Brooklyn Heights 216-459-8700

E. A. Wichman Co.
Toledo 419-385-9121

OKLAHOMA

Hagar Rest. Service, Inc.
Oklahoma City 405-235-2184

Krueger, Inc.
Oklahoma City 405-528-8883

OREGON

Ron's Service, Inc.
Portland 503-624-0890

PENNSYLVANIA

Elmer Schultz Services
Philadelphia 215-627-5401

FAST Comm. Appl. Service
Philadelphia 215-288-4800

Appliance Installation & Service
Pittsburgh 412-809-0244

K & D Service Co.
Harrisburg 717-236-9039

Electric Repair Co.
Reading 610-376-5444

RHODE ISLAND

Marshall Electric Co.
Providence 401-331-1163

SOUTH CAROLINA

Whaley Foodservice Repair
W. Columbia 803-791-4420

TENNESSEE

Camp Electric
Memphis 901-527-7543

TEXAS

GCS Service
Fort Worth 800-433-1804

Armstrong Repair Service
Houston 713-666-7100

Cooking Equipment Specialist
Mesquite 888-866-9276

Refrigerated Specialist, Inc.
Mesquite 888-866-9276

Commercial Kitchen Repair Co.
San Antonio 210-735-2811

UTAH

La Monica's Rest. Equip. Service
Murray 801-263-3221

VIRGINIA

Daubers
Norfolk 757-855-4097

Daubers
Springfield 703-866-3600

WASHINGTON

3Wire Restaurant Appliance
Seattle 800-207-3146

WISCONSIN

A.S.C., Inc.
Madison 608-246-3160

A.S.C., Inc.
Milwaukee 414-543-6460

CANADA

ALBERTA

Key Food Equipment Service
Edmonton 780-438-1690

BRITISH COLUMBIA

Key Food Equipment Service
Vancouver 604-433-4484

Key Food Equipment Service
Victoria 250-920-4888

MANITOBA

Air Rite, Inc.
Winnipeg 204-895-2300

NEW BRUNSWICK

EMR Services, Ltd.
Moncton 506-855-4228

ONTARIO

R.G. Henderson Ltd.
Toronto 416-422-5580

Choquette - CKS, Inc.
Ottawa 613-739-8458

QUÉBEC

Choquette - CKS, Inc.
Montreal 514-722-2000

Choquette - CKS, Inc.
Québec City 418-681-3944

UNITED KINGDOM

Marren Group
Northants +44(0)1933 666233

